



REPLACEMENT PARTS CATALOG

W-12

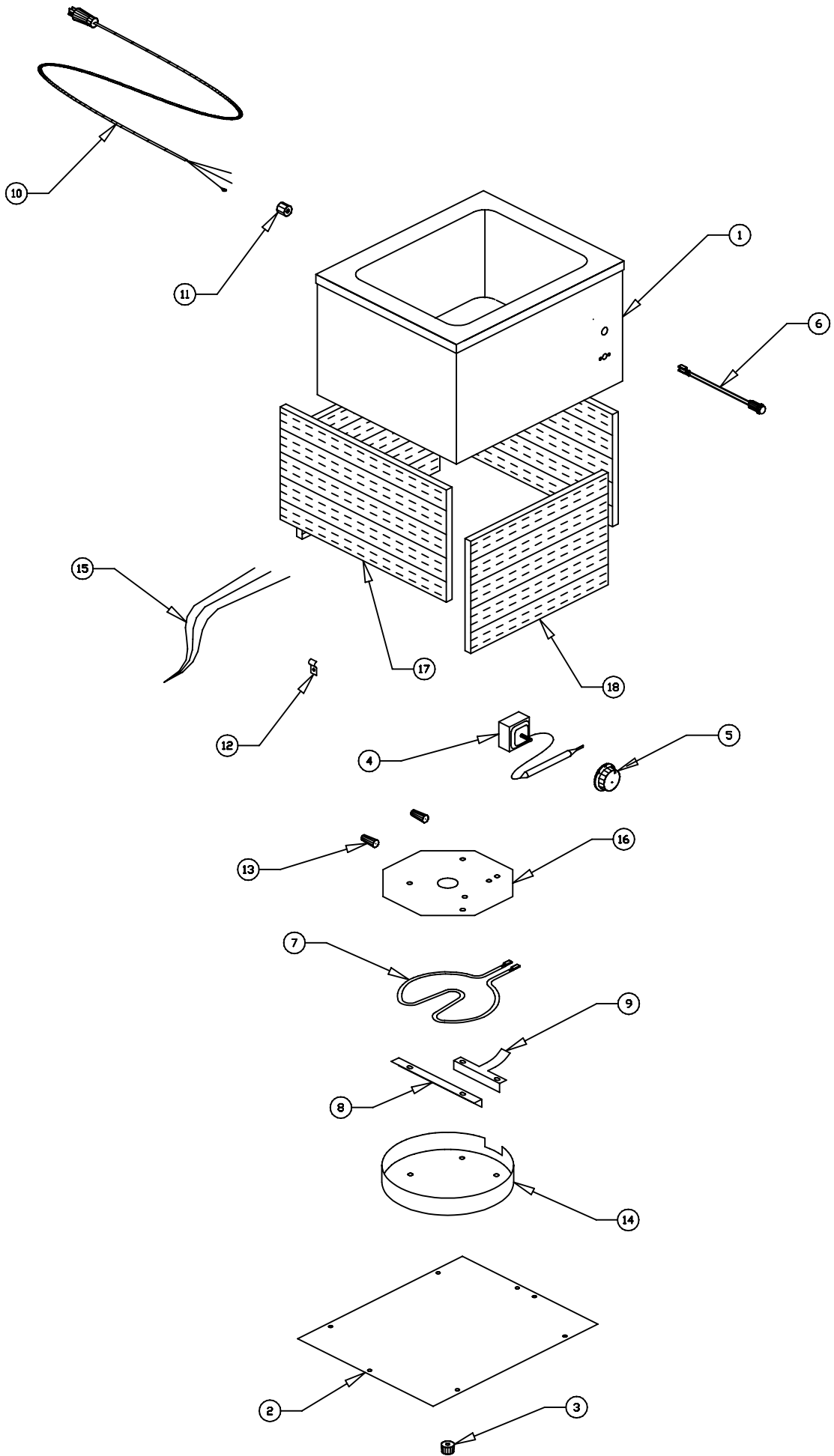
COUNTERTOP WARMER

W-12 56911 - 120V/800W

APW / Wyott
FOOD SERVICE EQUIPMENT CO.
DALLAS, TX 75226

W-12 COUNTERTOP WARMER

ITEM NUMBER	STOCK NUMBER	DESCRIPTION
1	56928	PAN & WRAPPER ASSEMBLY
2	56943	BOTTOM COVER
3	55768	FOOT
4	60320	THERMOSTAT
5	56528	KNOB
6	56530	INDICATOR LIGHT
7	55960	HEATING ELEMENT/120V-800W
8	55695	ELEMENT CLAMP
9	55696	ANTI-ROTATION CLAMP
10	55947	CORD
11	89101	STRAIN RELIEF BUSHING
12	89120	JIFFY CLIP
13	75490	WIRE CONNECTOR
14	55992	ELEMENT COVER
15	56954	WIRE SET
16	50817	HEAT TRANSFER PLATE
17	56944	SIDE INSULATION
18	56945	FRONT/BACK INSULATION
	88961	10-24 GREEN HEX NUT
	89061	10-24 HEX NUT
	89059	#10 EXTERNAL LOCKWASHER
	89073	#8 x 1/2" SHEET METAL SCREW



W-12 COUNTERTOP WARMER

W-12 WIRING DIAGRAM

AMERICAN PERMANENT WARE, INC.

729 THIRD AVENUE

DALLAS, TX. 75226

