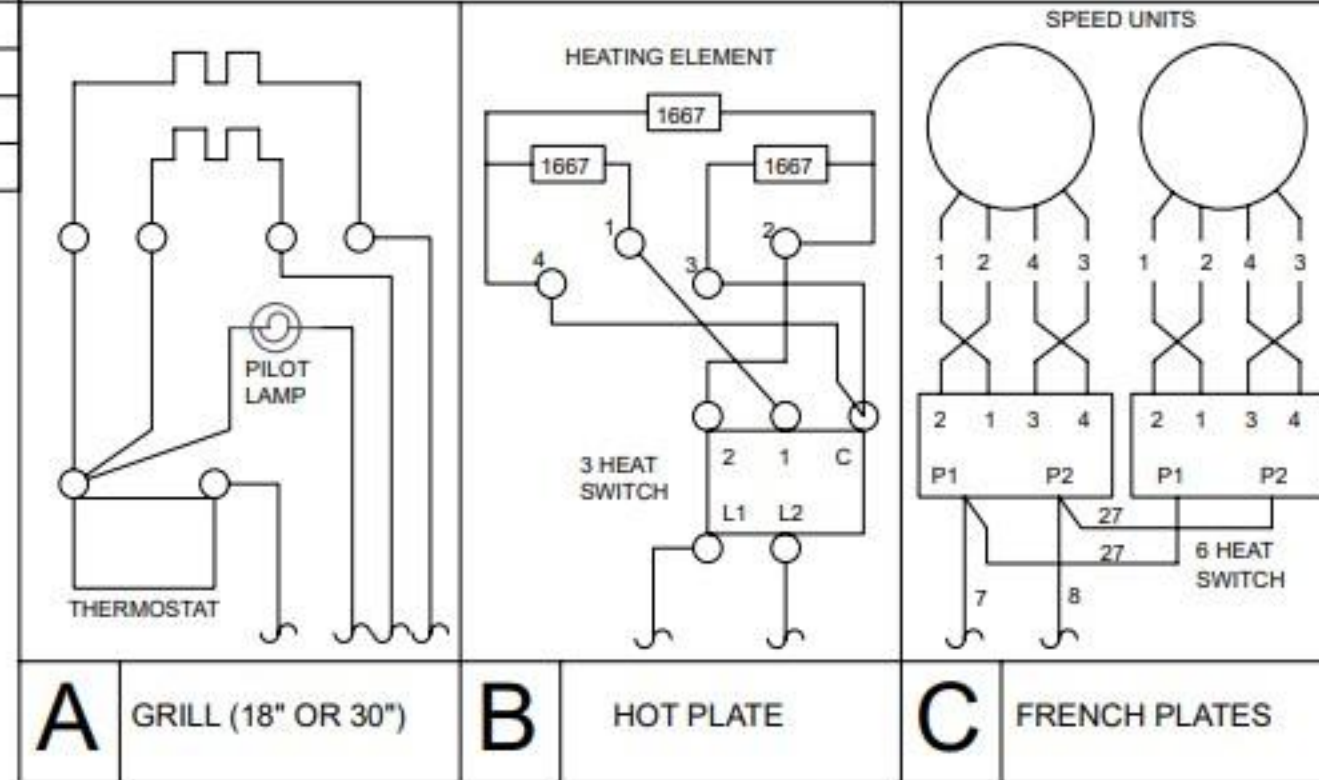


STAR MODEL DESIGNATION	PREVIOUS MODEL DESIGNATION	TOP ARRANGEMENT	
		SECTION 1	SECTION 2
R30S-ATA	32S-1	C	C
R30S-ATB	32S-2 & 32S-2M(H)	B	C
R30S-ATC	32S-3 & 32S-3M(H)	B	B
R30S-ATD	32S-2M(G)	A (18")	C
R30S-ATE	32S-3M(G)	B	A (18")
R30S-ATF	32S-4 & 32S-4M	A (30")	

#### TOP SECTION WIRING DIAGRAMS



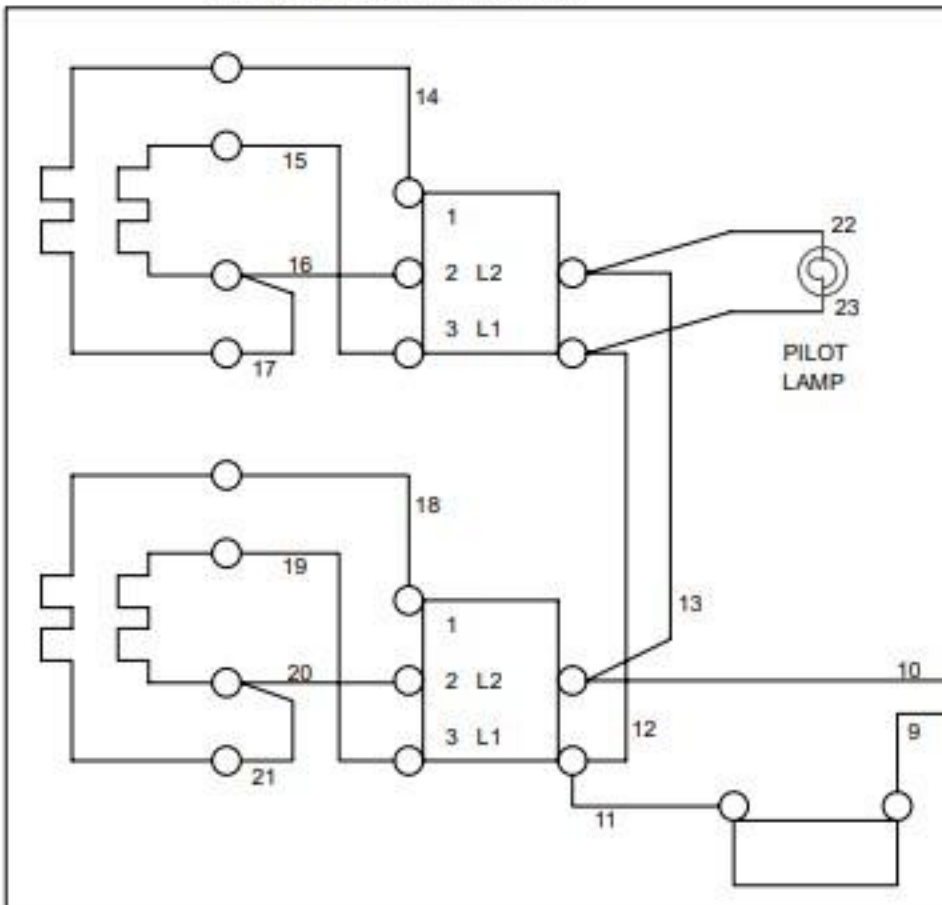
EXAMPLE FOR DETERMINING THE WIRING OF A LANG RANGE:

(1) VIEWED FROM THE FRONT, LEFT TO RIGHT, THE TOP 12 OR 18 INCH SECTIONAL ARRANGMENT FOR AN R30S-ATD RANGE IS A (18") AND C (SEE TOP ARRANGMENT CHART). EACH OF THE LETTERS REPRESENT ONE OF THE TOP SECTION WIRING DIAGRAMS ABOVE. R30S-ATF IS ONE 30" SECTION - GRIDDLE OPTION ONLY - & HAS 2 HEATING ELEMENTS AND FOUR POWER INPUT LEADS.

(2) THE POWER INPUT LEADS TO EACH SECTION AND THE OVEN ARE SHOWN AT LEFT CONNECTED TO THEIR RESPECTIVE CIRCUIT BREAKERS.

(3) SEE SERVICE CONNECTION CHART FOR PROPER CONNECTION OF CIRCUIT BREAKERS TO POWER SUPPLY.

#### OVEN WIRING DIAGRAM.



CIRCUIT BREAKERS

#### SERVICE CONNECTION

SINGLE PHASE	L1	1, 3
	L2	2, 4
THREE PHASE	L1	1, 4
	L2	2
	L3	3

THIS DRAWING CONTAINS INFORMATION CONFIDENTIAL TO STAR MFG. INT'L. INC.  
NO REPRODUCTION OR DISCLOSURE OF ITS CONTENTS IS PERMITTED.

#### MODELS:

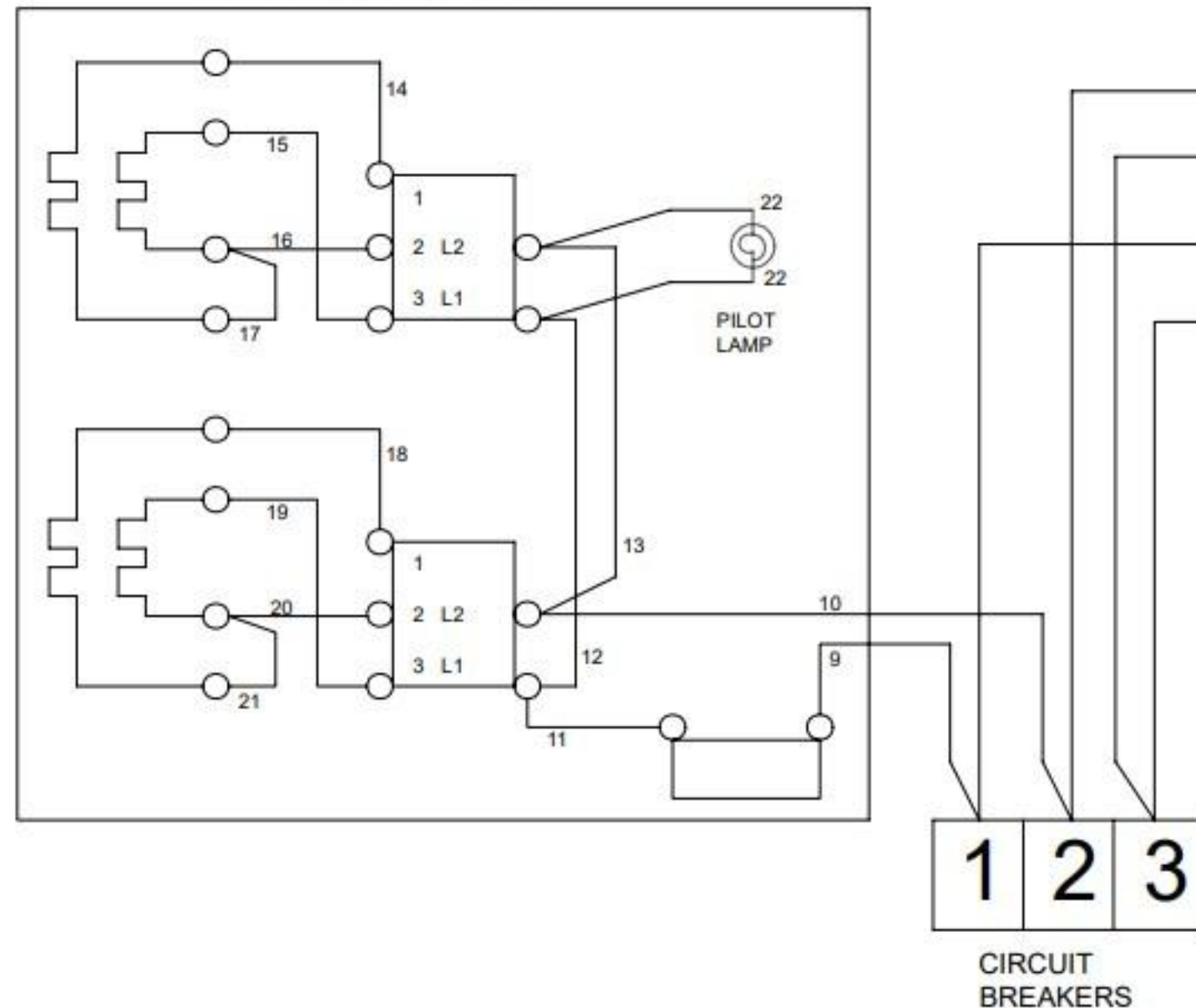
32Series Range 208-240 VOLT AC  
R30 Series Range 208-240 VOLT AC

**Lang**<sup>TM</sup>  
A Division of Star Mfg. Int'l, Inc.

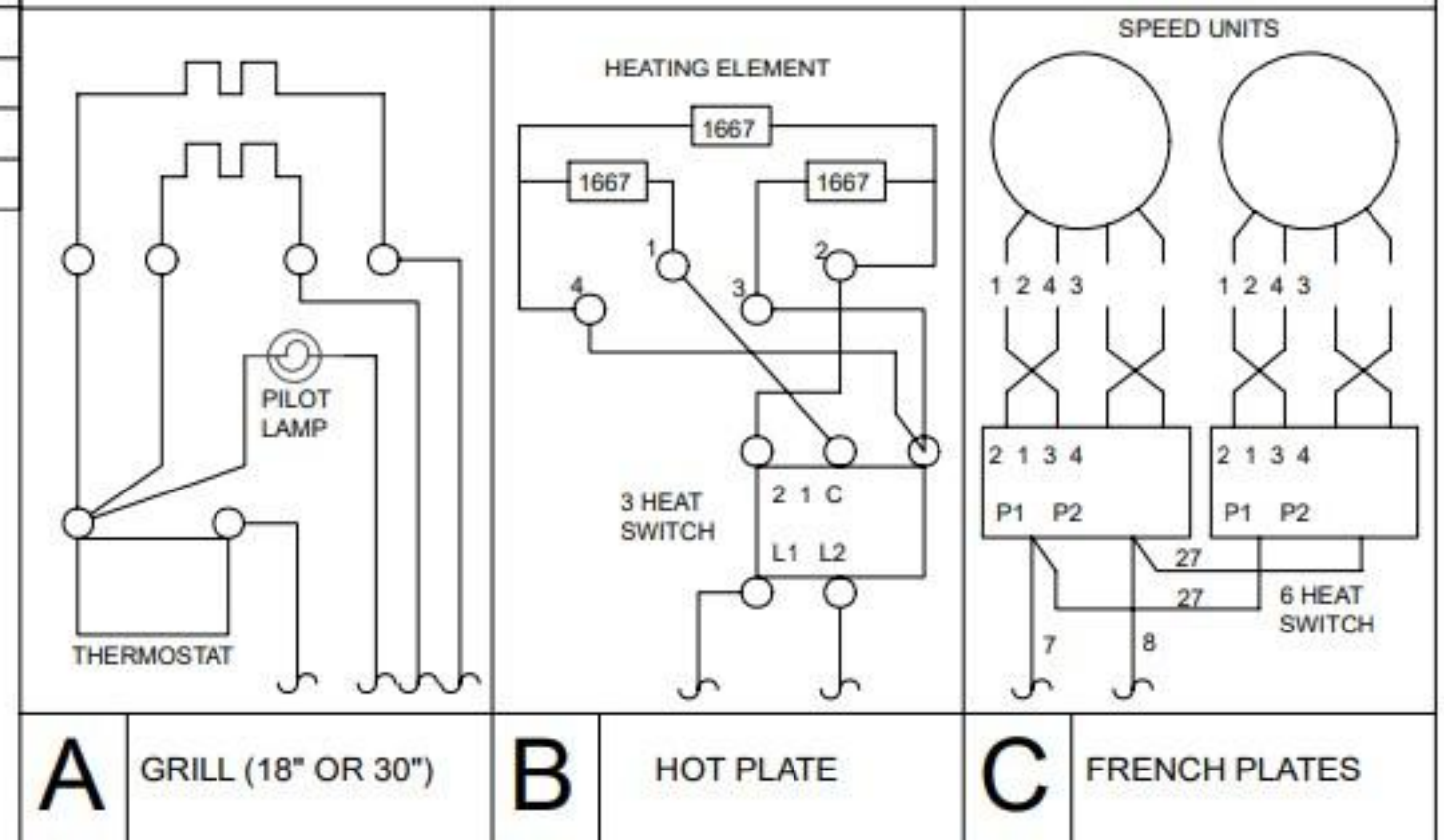


STAR MODEL DESIGNATION	PREVIOUS MODEL DESIGNATION	TOP ARRANGEMENT	
		SECTION 1	SECTION 2
R30S-ATA	32S-1	C	C
R30S-ATB	32S-2 & 32S-2M(H)	B	C
R30S-ATC	32S-3 & 32S-3M(H)	B	B
R30S-ATD	32S-2M(G)	A (18")	C
R30S-ATE	32S-3M(G)	B	A (18")
R30S-ATF	32S-4 & 32S-4M	A (30")	

OVEN WIRING DIAGRAM.



TOP SECTION WIRING DIAGRAMS



EXAMPLE FOR DETERMINING THE WIRING OF A LANG RANGE:

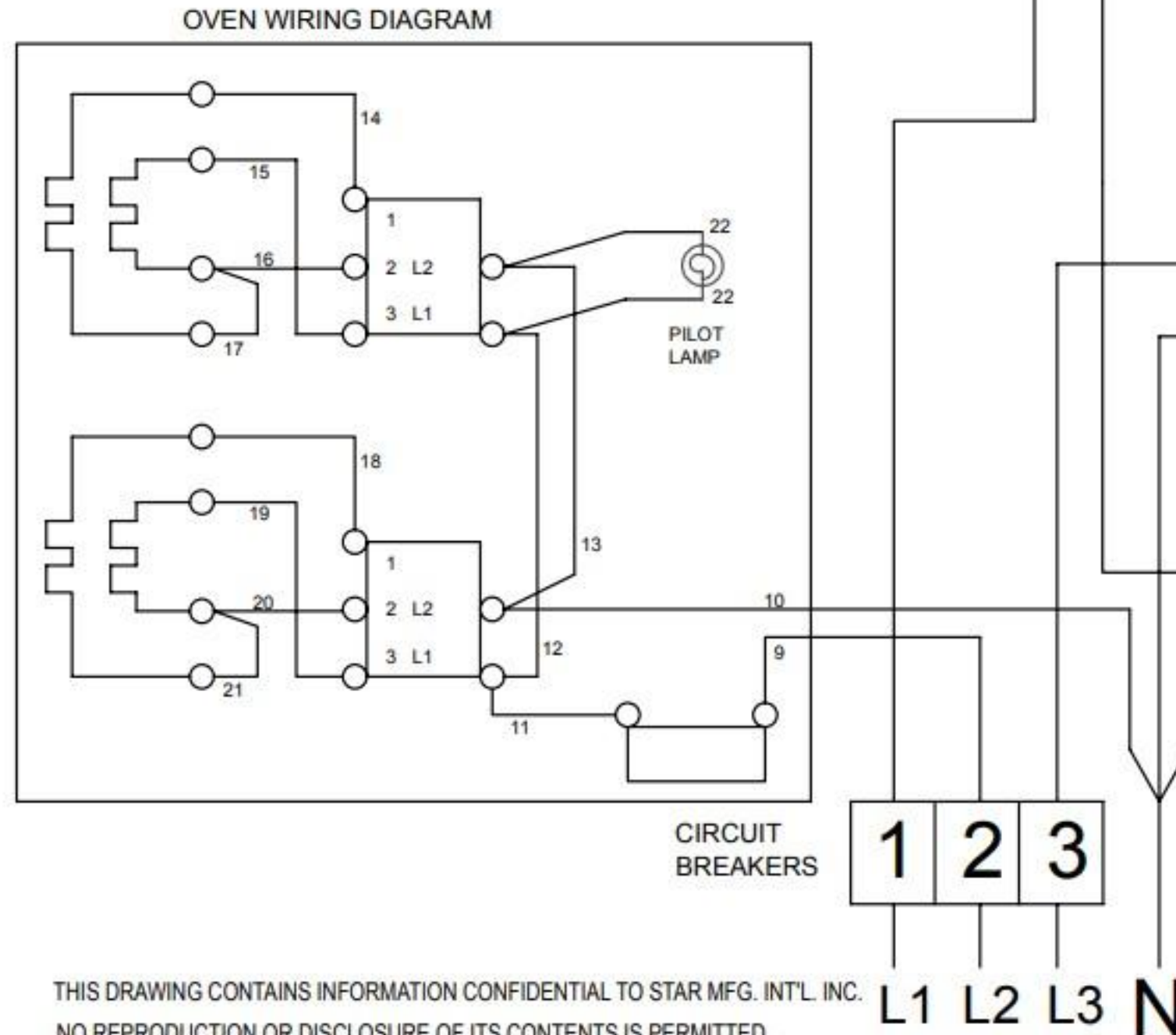
(1) VIEWED FROM THE FRONT, LEFT TO RIGHT, THE TOP 12 OR 18 INCH SECTIONAL ARRANGMENT FOR AN R30S-ATD RANGE IS A (18") AND C (SEE TOP ARRANGMENT CHART). EACH OF THE LETTERS REPRESENT ONE OF THE TOP SECTION WIRING DIAGRAMS ABOVE. R30S-ATF IS ONE 30" SECTION - GRIDDLE OPTION ONLY - & HAS 2 HEATING ELEMENTS AND FOUR POWER INPUT LEADS.

(2) THE POWER INPUT LEADS TO EACH SECTION AND THE OVEN ARE SHOWN AT LEFT CONNECTED TO THEIR RESPECTIVE CIRCUIT BREAKERS.

(3) SEE SERVICE CONNECTION CHART FOR PROPER CONNECTION OF CIRCUIT BREAKERS TO POWER SUPPLY.



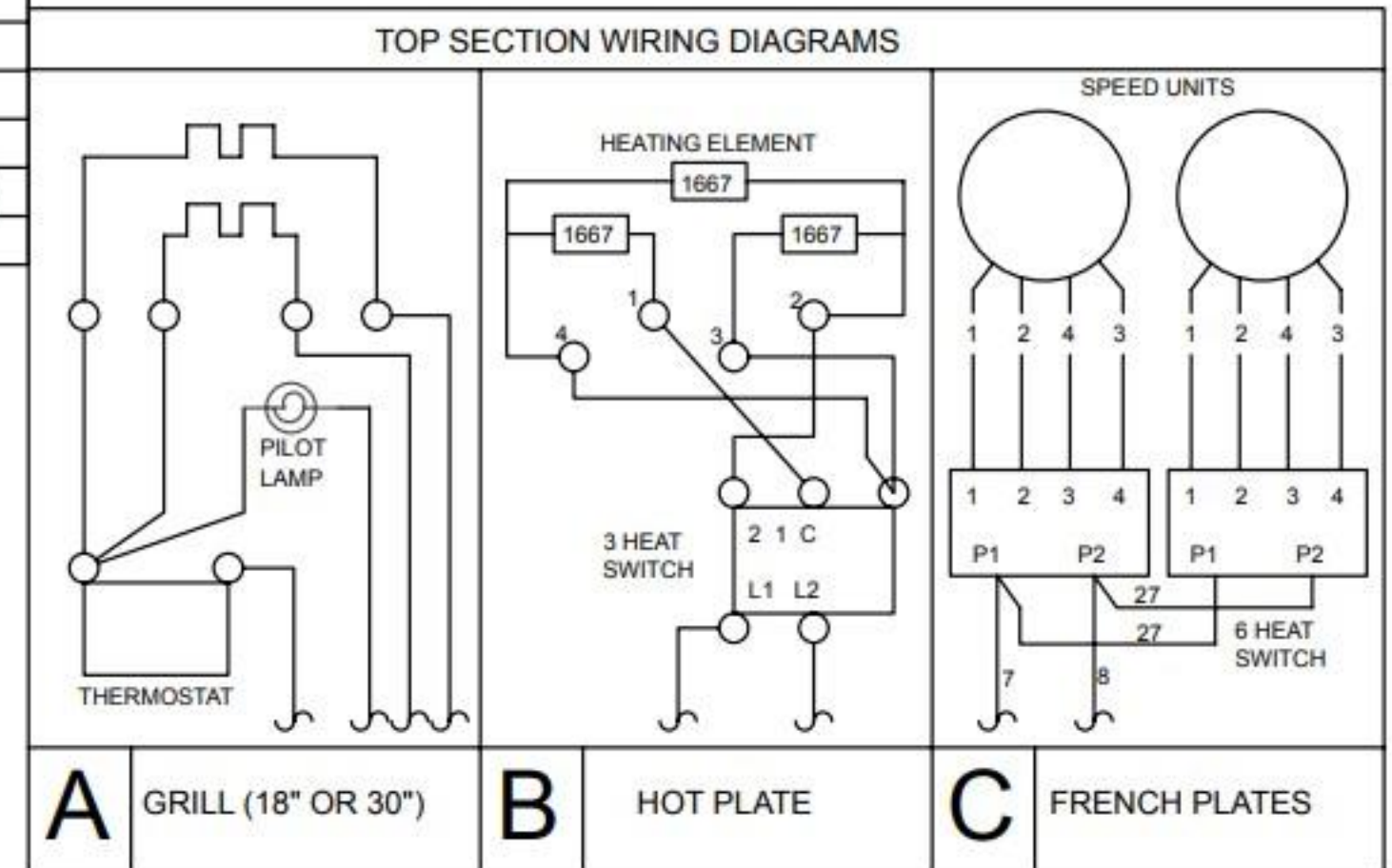
STAR MODEL DESIGNATION	PREVIOUS MODEL DESIGNATION	TOP ARRANGEMENT	
		SECTION 1	SECTION 2
R30S-ATA	32S-1	C	C
R30S-ATB	32S-2 & 32S-2M(H)	B	C
R30S-ATC	32S-3 & 32S-3M(H)	B	B
R30S-ATD	32S-2M(G)	A (18")	C
R30S-ATE	32S-3M(G)	B	A (18")
R30S-ATF	32S-4 & 32S-4M	A (30")	



THIS DRAWING CONTAINS INFORMATION CONFIDENTIAL TO STAR MFG. INT'L. INC.  
NO REPRODUCTION OR DISCLOSURE OF ITS CONTENTS IS PERMITTED.

### MODELS:

32Series Range: 220/380V & 240/415V, 3Ph, 4-wire  
R30 Series Range: 220/380V & 240/415V, 3Ph, 4-wire



### EXAMPLE FOR DETERMINING THE WIRING OF A LANG RANGE:

(1) VIEWED FROM THE FRONT, LEFT TO RIGHT, THE TOP 12 OR 18 INCH SECTIONAL ARRANGMENT FOR AN R30S-ATD RANGE IS A (18") AND C (SEE TOP ARRANGMENT CHART). EACH OF THE LETTERS REPRESENT ONE OF THE TOP SECTION WIRING DIAGRAMS ABOVE. R30S-ATF IS ONE 30" SECTION - GRIDDLE OPTION ONLY - & HAS 2 HEATING ELEMENTS AND FOUR POWER INPUT LEADS.

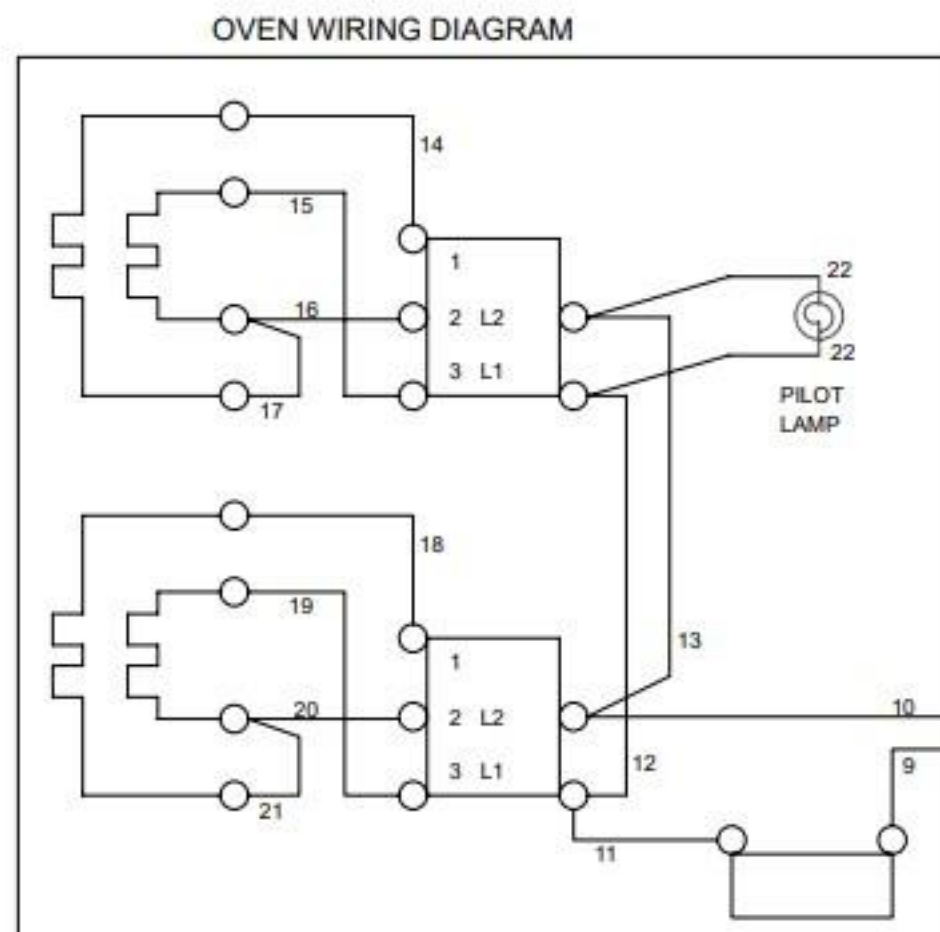
(2) THE POWER INPUT LEADS TO EACH SECTION AND THE OVEN ARE SHOWN AT LEFT CONNECTED TO THEIR RESPECTIVE CIRCUIT BREAKERS.

**Lang**<sup>TM</sup>

A Division of Star Mfg. Int'l, Inc.



STAR MODEL DESIGNATION	PREVIOUS MODEL DESIGNATION	TOP ARRANGEMENT	
		SECTION 1	SECTION 2
R30S-ATA	32S-1	C	C
R30S-ATB	32S-2 & 32S-2M(H)	B	C
R30S-ATC	32S-3 & 32S-3M(H)	B	B
R30S-ATD	32S-2M(G)	A (18")	C
R30S-ATE	32S-3M(G)	B	A (18")
R30S-ATF	32S-4 & 32S-4M	A (30")	

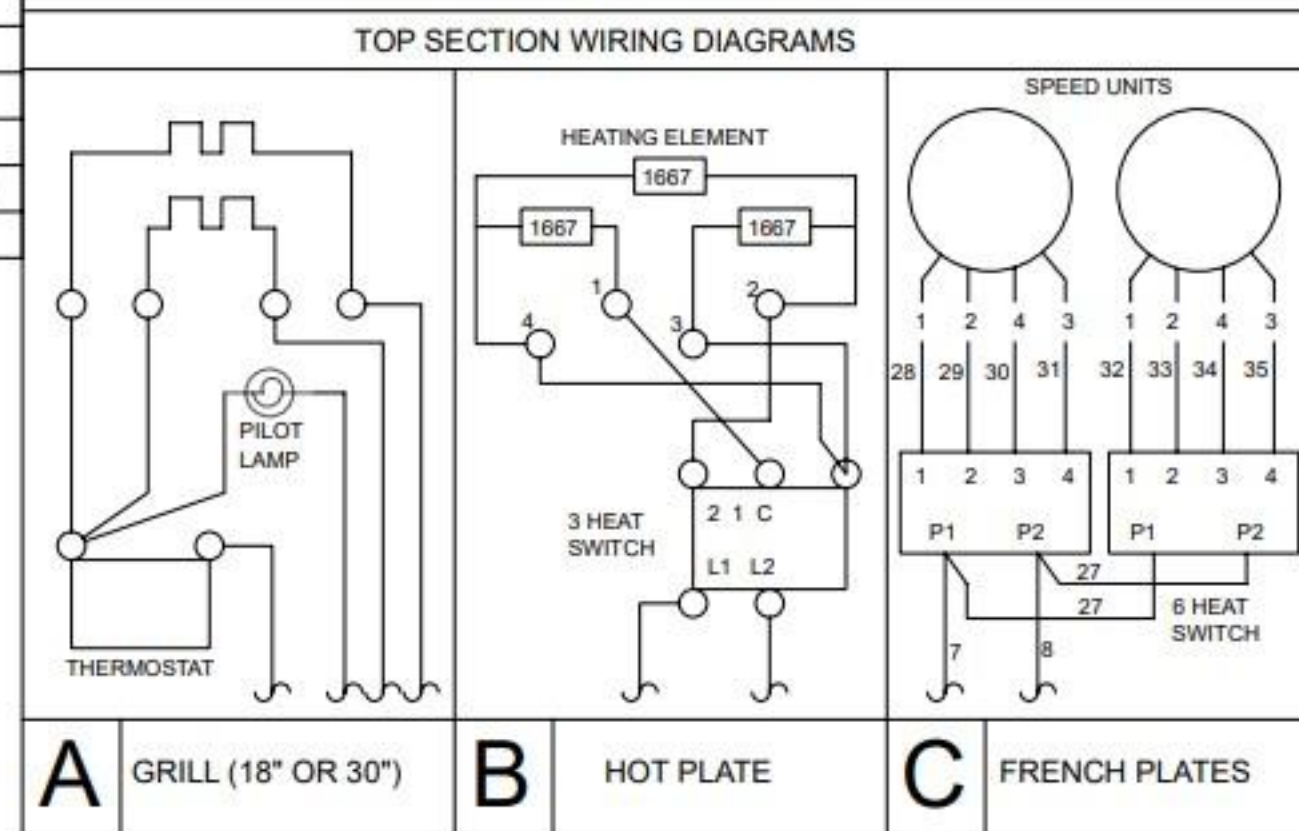


#### SERVICE CONNECTION

L1	1
L2	2
L3	3



CIRCUIT BREAKERS



EXAMPLE FOR DETERMINING THE WIRING OF A LANG RANGE:

(1) VIEWED FROM THE FRONT, LEFT TO RIGHT, THE TOP 12 OR 18 INCH SECTIONAL ARRANGEMENT FOR AN R30S-ATD RANGE IS A (18") AND C (SEE TOP ARRANGMENT CHART). EACH OF THE LETTERS REPRESENT ONE OF THE TOP SECTION WIRING DIAGRAMS ABOVE. R30S-ATF IS ONE 30" SECTION - GRIDDLE OPTION ONLY - & HAS 2 HEATING ELEMENTS AND FOUR POWER INPUT LEADS.

(2) THE POWER INPUT LEADS TO EACH SECTION AND THE OVEN ARE SHOWN AT LEFT CONNECTED TO THEIR RESPECTIVE CIRCUIT BREAKERS.

(3) SEE SERVICE CONNECTION CHART FOR PROPER CONNECTION OF CIRCUIT BREAKERS TO POWER SUPPLY.

THIS DRAWING CONTAINS INFORMATION CONFIDENTIAL TO STAR MFG. INT'L. INC.  
NO REPRODUCTION OR DISCLOSURE OF ITS CONTENTS IS PERMITTED.

#### MODELS:

32Series Range: 380V  
R30 Series Range: 380V

**Lang**™

A Division of Star Mfg. Int'l, Inc.