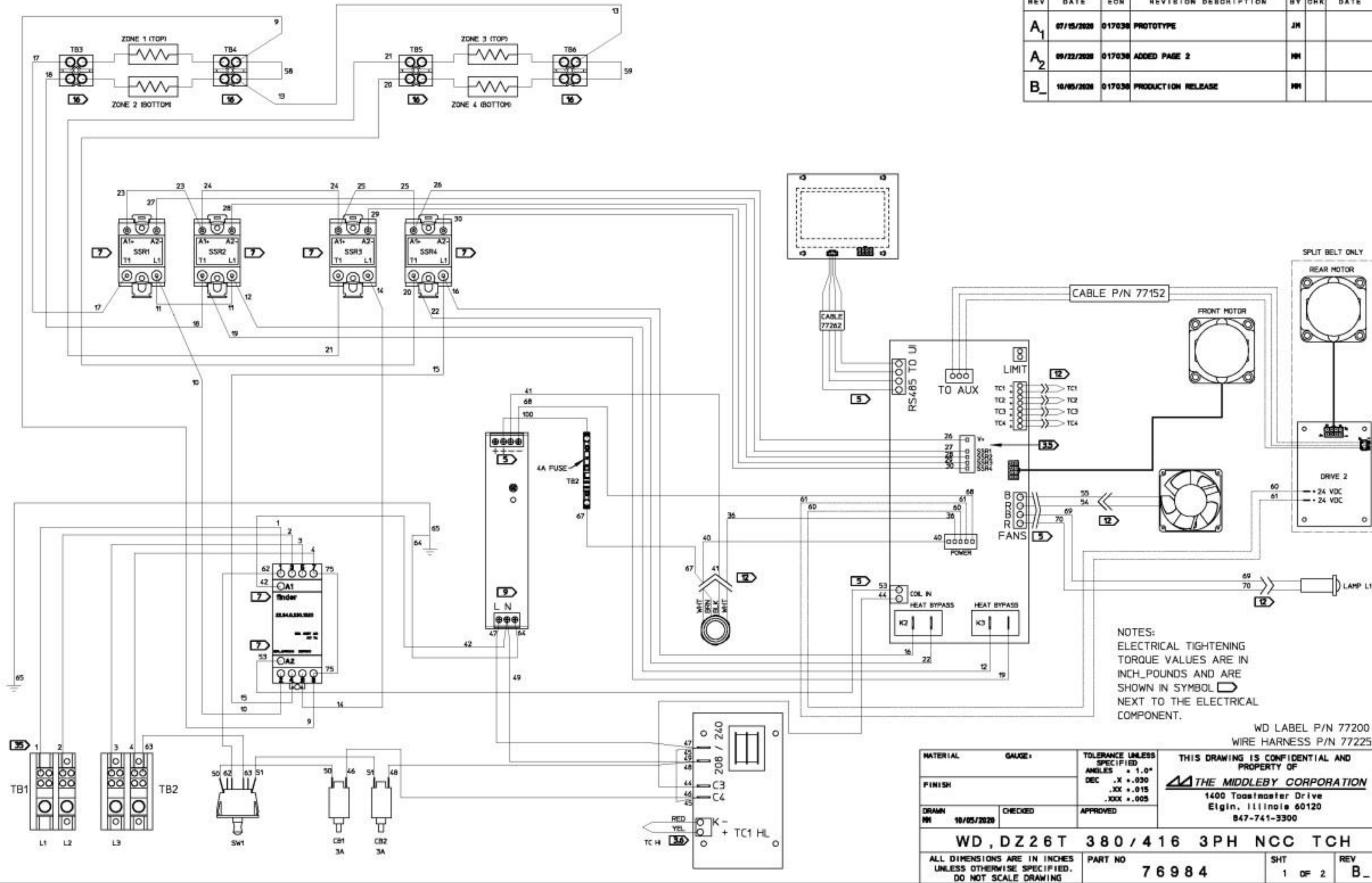

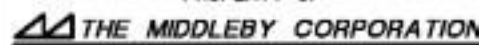


| REV | DATE | EON | REVISION DESCRIPTION | BY | CHK | DATE |
|----------------|------------|--------|----------------------|----|-----|------|
| A ₁ | 07/15/2020 | 017038 | PROTOTYPE | JM | | |
| A ₂ | 09/22/2020 | 017038 | ADDED PAGE 2 | MM | | |
| B ₋ | 10/05/2020 | 017038 | PRODUCTION RELEASE | MM | | |

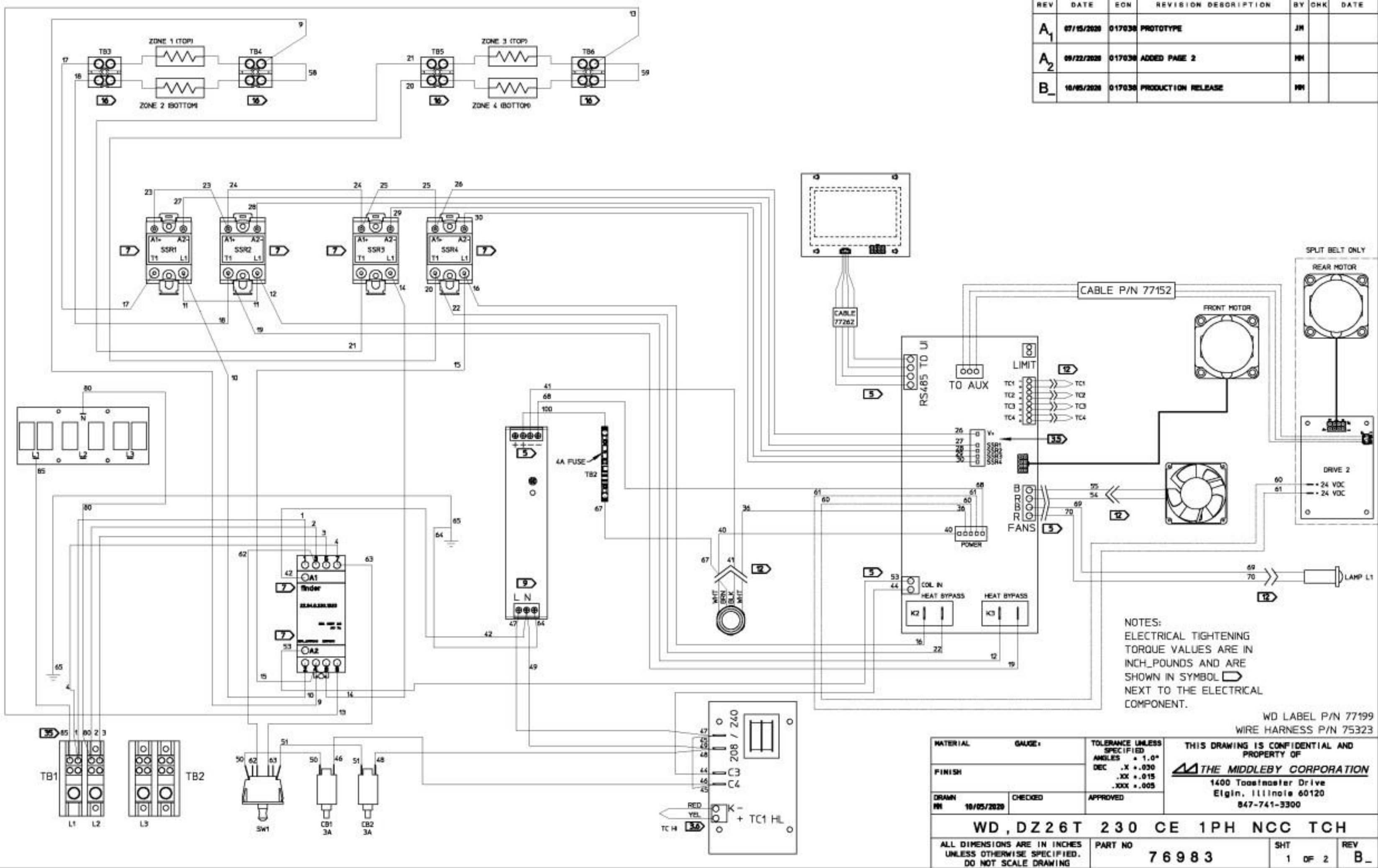



NOTES:
 ELECTRICAL TIGHTENING TORQUE VALUES ARE IN INCH_POUNDS AND ARE SHOWN IN SYMBOL  NEXT TO THE ELECTRICAL COMPONENT.

WD LABEL P/N 77200
 WIRE HARNESS P/N 77225


| | | | |
|---|------------|--|---|
| MATERIAL | GAUGE: | TOLERANCE UNLESS SPECIFIED | THIS DRAWING IS CONFIDENTIAL AND PROPERTY OF  THE MIDDLEBY CORPORATION 1400 Toastmaster Drive Elgin, Illinois 60120 847-741-3300 |
| FINISH | | ANGLES $\pm 1.0^\circ$ DEC $.X \pm .030$.XX $\pm .015$.XXX $\pm .005$ | |
| DRAWN MM CHECKED APPROVED | 10/05/2020 | | |
| WD, DZ26T 380/416 3PH NCC TCH | | | |
| ALL DIMENSIONS ARE IN INCHES UNLESS OTHERWISE SPECIFIED. DO NOT SCALE DRAWING | | PART NO 76984 | SHT 1 OF 2 |
| | | REV B ₋ | |

| REV | DATE | ECN | REVISION DESCRIPTION | BY | CHK | DATE |
|----------------|------------|--------|----------------------|----|-----|------|
| A ₁ | 07/15/2020 | 017030 | PROTOTYPE | JH | | |
| A ₂ | 09/22/2020 | 017030 | ADDED PAGE 2 | WH | | |
| B ₋ | 10/05/2020 | 017030 | PRODUCTION RELEASE | WH | | |

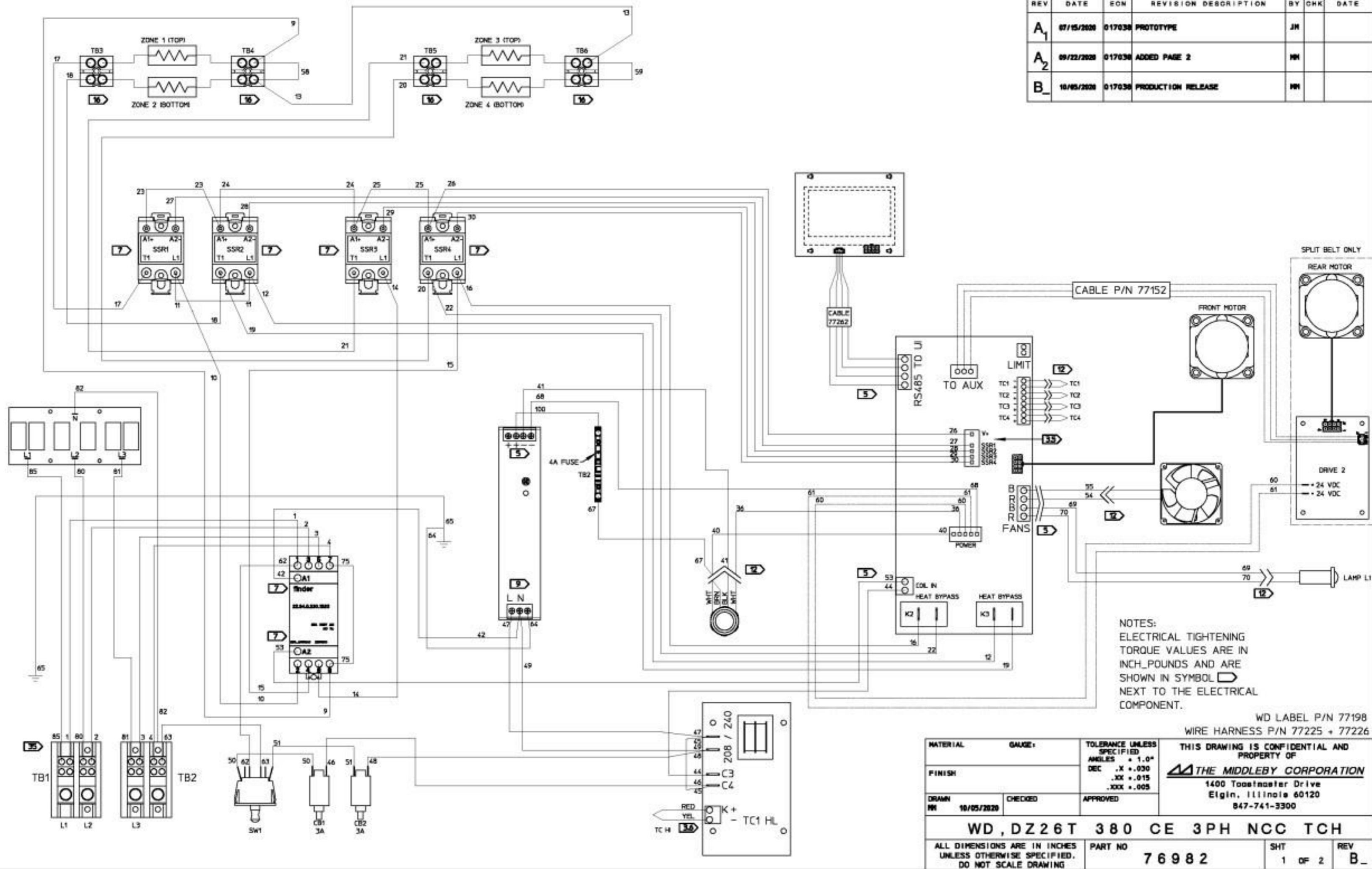


NOTES:
ELECTRICAL TIGHTENING TORQUE VALUES ARE IN INCH_POUNDS AND ARE SHOWN IN SYMBOL  NEXT TO THE ELECTRICAL COMPONENT.

WD LABEL P/N 77199
WIRE HARNESS P/N 75323

| | | | | |
|---|------------|---|---|-----------------------|
| MATERIAL | GAUGE: | TOLERANCE UNLESS SPECIFIED | THIS DRAWING IS CONFIDENTIAL AND PROPERTY OF  THE MIDDLEBY CORPORATION 1400 Toastmaster Drive Elgin, Illinois 60120 847-741-3300 | |
| FINISH | | ANGLES ± 1.0° DEC .X ± .030 .XX ± .015 .XXX ± .005 | | |
| DRAWN WH | 10/05/2020 | CHECKED | | APPROVED |
| WD, DZ26T 230 CE 1PH NCC TCH | | | | |
| ALL DIMENSIONS ARE IN INCHES UNLESS OTHERWISE SPECIFIED. DO NOT SCALE DRAWING | | PART NO 76983 | SHT 1 OF 2 | REV B ₋ |

| REV | DATE | EON | REVISION DESCRIPTION | BY | CHK | DATE |
|----------------|------------|--------|----------------------|----|-----|------|
| A ₁ | 07/15/2020 | 017038 | PROTOTYPE | JM | | |
| A ₂ | 09/22/2020 | 017038 | ADDED PAGE 2 | NM | | |
| B ₋ | 10/05/2020 | 017038 | PRODUCTION RELEASE | NM | | |

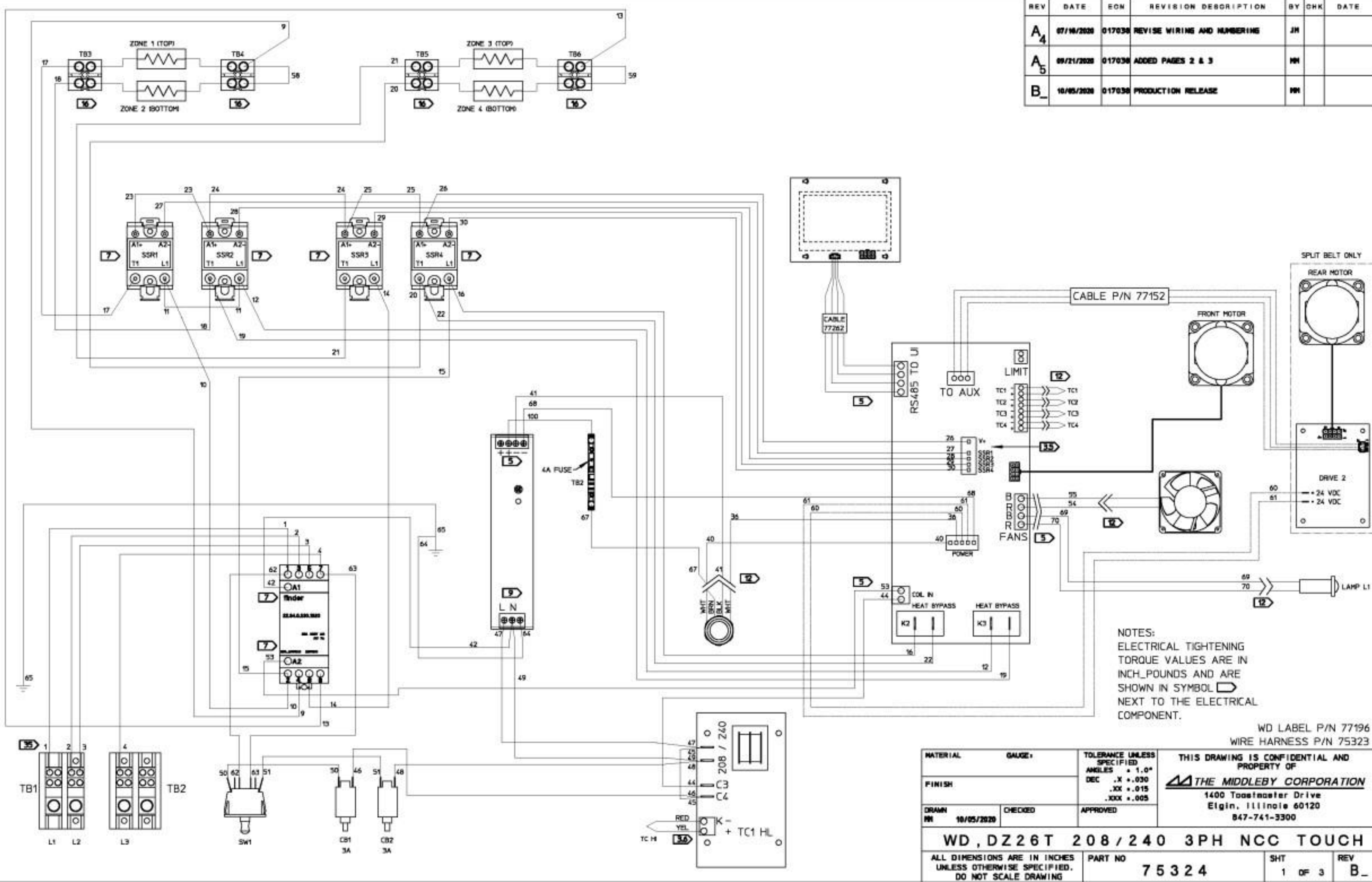


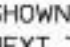
NOTES:
 ELECTRICAL TIGHTENING
 TORQUE VALUES ARE IN
 INCH_POUNDS AND ARE
 SHOWN IN SYMBOL □
 NEXT TO THE ELECTRICAL
 COMPONENT.

WD LABEL P/N 77198
 WIRE HARNESS P/N 77225 + 77226


| | | | | |
|---|------------|---|--|-----------------------|
| MATERIAL | Gauge: | TOLERANCE UNLESS SPECIFIED | THIS DRAWING IS CONFIDENTIAL AND PROPERTY OF THE MIDDLEBY CORPORATION 1400 Toastmaster Drive Elgin, Illinois 60120 847-741-3300 | |
| FINISH | | ANGLES + 1.0° DEC .X + .030 .XX + .015 .XXX + .005 | | |
| DRAWN NM | 10/05/2020 | CHECKED | | APPROVED |
| WD, DZ26T 380 CE 3PH NCC TCH | | | | |
| ALL DIMENSIONS ARE IN INCHES UNLESS OTHERWISE SPECIFIED. DO NOT SCALE DRAWING | | PART NO 76982 | SHT 1 OF 2 | REV B ₋ |

| REV | DATE | EON | REVISION DESCRIPTION | BY | CHK | DATE |
|----------------|------------|--------|-----------------------------|----|-----|------|
| A ₄ | 07/16/2020 | 017030 | REVISE WIRING AND NUMBERING | JH | | |
| A ₅ | 09/21/2020 | 017030 | ADDED PAGES 2 & 3 | NH | | |
| B ₋ | 10/05/2020 | 017030 | PRODUCTION RELEASE | NH | | |

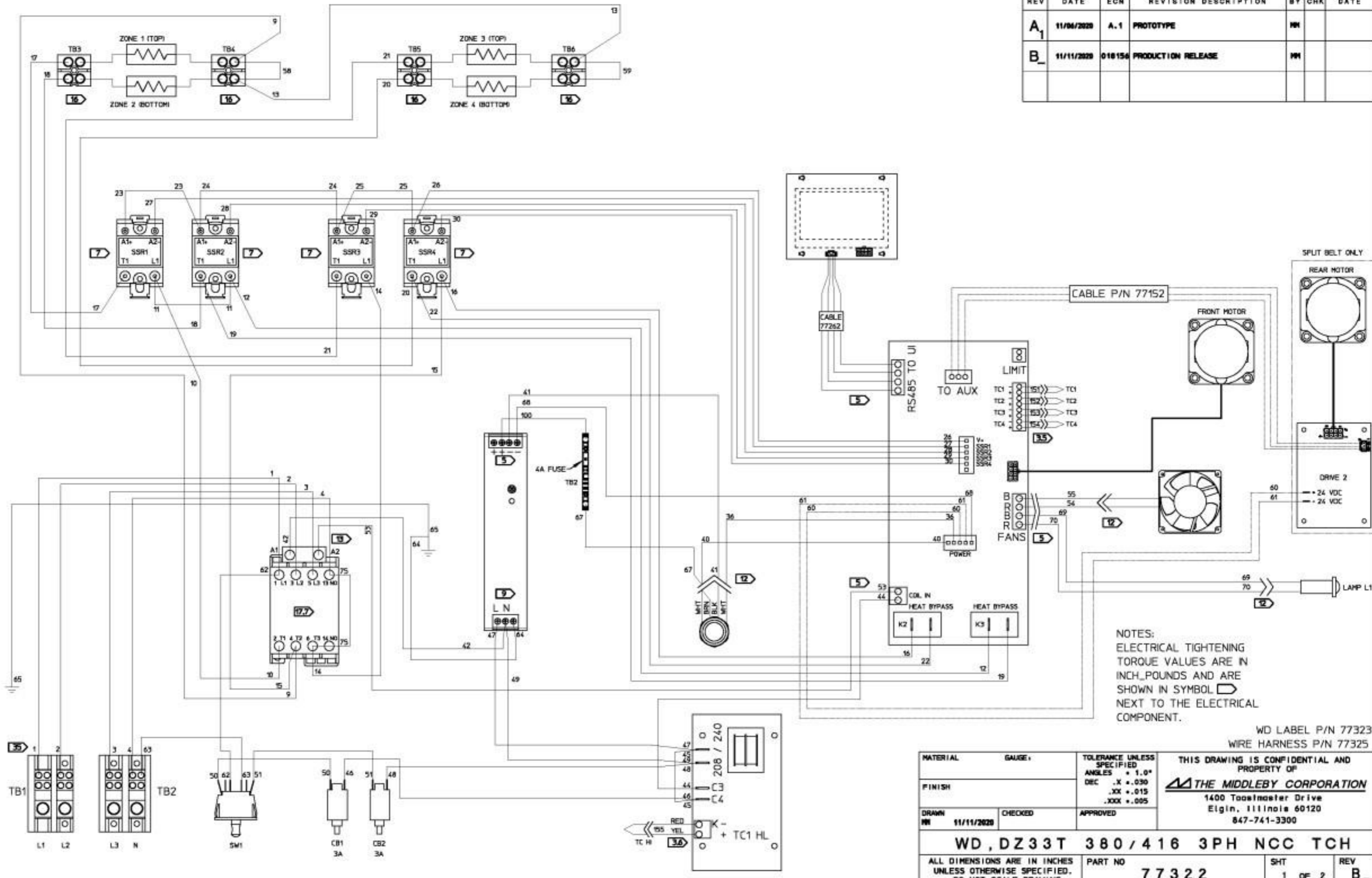


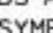
NOTES:
 ELECTRICAL TIGHTENING
 TORQUE VALUES ARE IN
 INCH_POUNDS AND ARE
 SHOWN IN SYMBOL 
 NEXT TO THE ELECTRICAL
 COMPONENT.

WD LABEL P/N 77196
 WIRE HARNESS P/N 75323

| | | | |
|---|---------|--|--|
| MATERIAL | GAUGE | TOLERANCE UNLESS SPECIFIED | THIS DRAWING IS CONFIDENTIAL AND PROPERTY OF  THE MIDDLEBY CORPORATION 1400 Toastmaster Drive Elgin, Illinois 60120 847-741-3300 |
| FINISH | | ANGLES $\pm 1.0^\circ$ DEC .X $\pm .030$.XX $\pm .015$.XXX $\pm .005$ | |
| DRAWN NH | CHECKED | APPROVED | |
| WD, DZ26T 208/240 3PH NCC TOUCH | | | PART NO 75324 |
| ALL DIMENSIONS ARE IN INCHES UNLESS OTHERWISE SPECIFIED. DO NOT SCALE DRAWING | | SHT 1 OF 3 | REV B ₋ |

| REV | DATE | ECN | REVISION DESCRIPTION | BY | CHK | DATE |
|----------------|------------|--------|----------------------|----|-----|------|
| A ₁ | 11/04/2020 | A.1 | PROTOTYPE | MM | | |
| B ₁ | 11/11/2020 | 018156 | PRODUCTION RELEASE | MM | | |

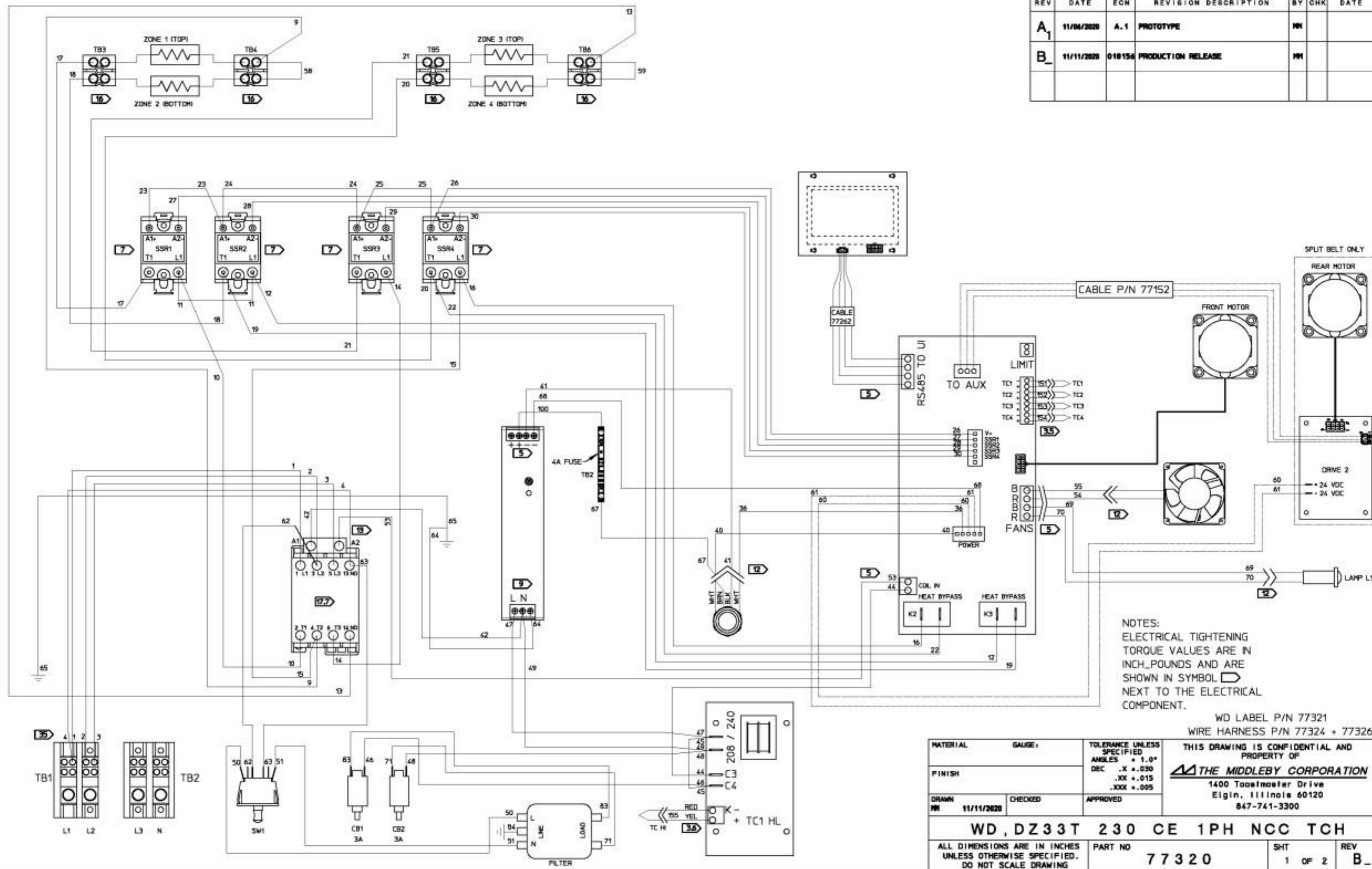


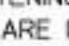
NOTES:
 ELECTRICAL TIGHTENING TORQUE VALUES ARE IN INCH_POUNDS AND ARE SHOWN IN SYMBOL  NEXT TO THE ELECTRICAL COMPONENT.

WD LABEL P/N 77323
 WIRE HARNESS P/N 77325


| | | | |
|---|------------|---|---|
| MATERIAL | GAUGE | TOLERANCE UNLESS SPECIFIED | THIS DRAWING IS CONFIDENTIAL AND PROPERTY OF THE MIDDLEBY CORPORATION 1400 Toolmaster Drive Elgin, Illinois 60120 847-741-3300 |
| FINISH | | ANGLES $\pm 1.0^\circ$ DEC .X ± 0.030 .XX ± 0.015 .XXX ± 0.005 | |
| DRAWN | CHECKED | APPROVED | |
| MM | 11/11/2020 | | |
| WD, DZ33T 380 / 416 3PH NCC TCH | | | |
| ALL DIMENSIONS ARE IN INCHES UNLESS OTHERWISE SPECIFIED. DO NOT SCALE DRAWING | | PART NO | SHT |
| | | 77322 | 1 OF 2 |
| | | REV | B ₁ |

| REV | DATE | ECN | REVISION DESCRIPTION | BY | CHK | DATE |
|----------------|------------|--------|----------------------|----|-----|------|
| A ₁ | 11/04/2020 | A.1 | PROTOTYPE | MM | | |
| B ₋ | 11/11/2020 | 010154 | PRODUCTION RELEASE | MM | | |

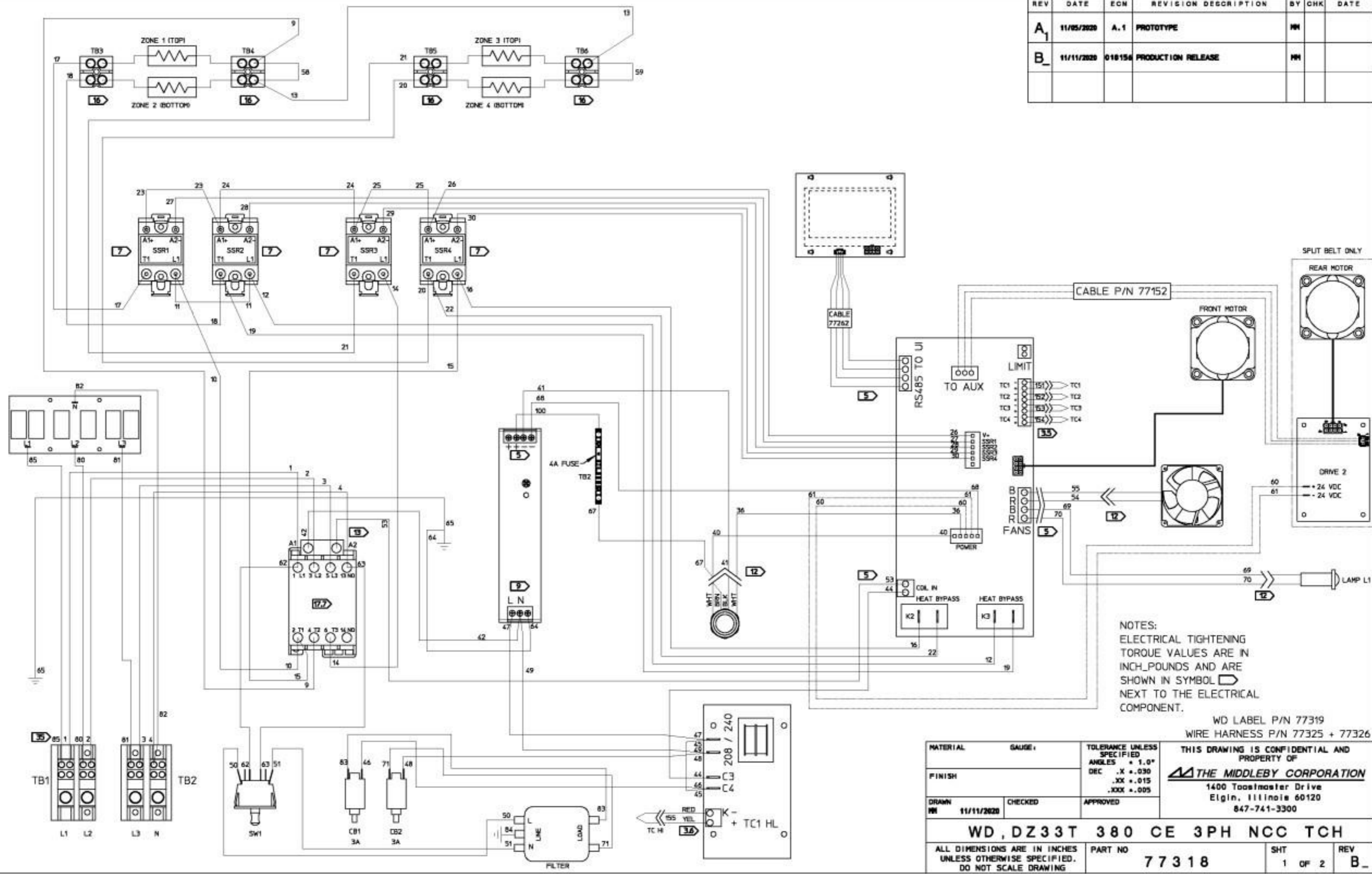



NOTES:
 ELECTRICAL TIGHTENING TORQUE VALUES ARE IN INCH_POUNDS AND ARE SHOWN IN SYMBOL  NEXT TO THE ELECTRICAL COMPONENT.

WD LABEL P/N 77321
 WIRE HARNESS P/N 77324 + 77326

| | | | | |
|--|------------|---|---|-----------------------|
| MATERIAL | GAUGE: | TOLERANCE UNLESS SPECIFIED | THIS DRAWING IS CONFIDENTIAL AND PROPERTY OF  THE MIDDLEBY CORPORATION 1400 Toastmaster Drive Elgin, Illinois 60120 847-741-3300 | |
| FINISH | | ANGLES ± 1.0° DEC .X ± .030 .XX ± .015 .XXX ± .005 | | |
| DRAWN MM | 11/11/2020 | CHECKED | | APPROVED |
| WD, DZ33T 230 CE 1PH NCC TCH | | | | |
| ALL DIMENSIONS ARE IN INCHES UNLESS OTHERWISE SPECIFIED. DO NOT SCALE DRAWING. | | PART NO 77320 | SHT 1 OF 2 | REV B ₋ |

| REV | DATE | ECN | REVISION DESCRIPTION | BY | CHK | DATE |
|----------------|------------|--------|----------------------|----|-----|------|
| A ₁ | 11/05/2020 | A.1 | PROTOTYPE | NM | | |
| B ₋ | 11/11/2020 | 010150 | PRODUCTION RELEASE | NM | | |

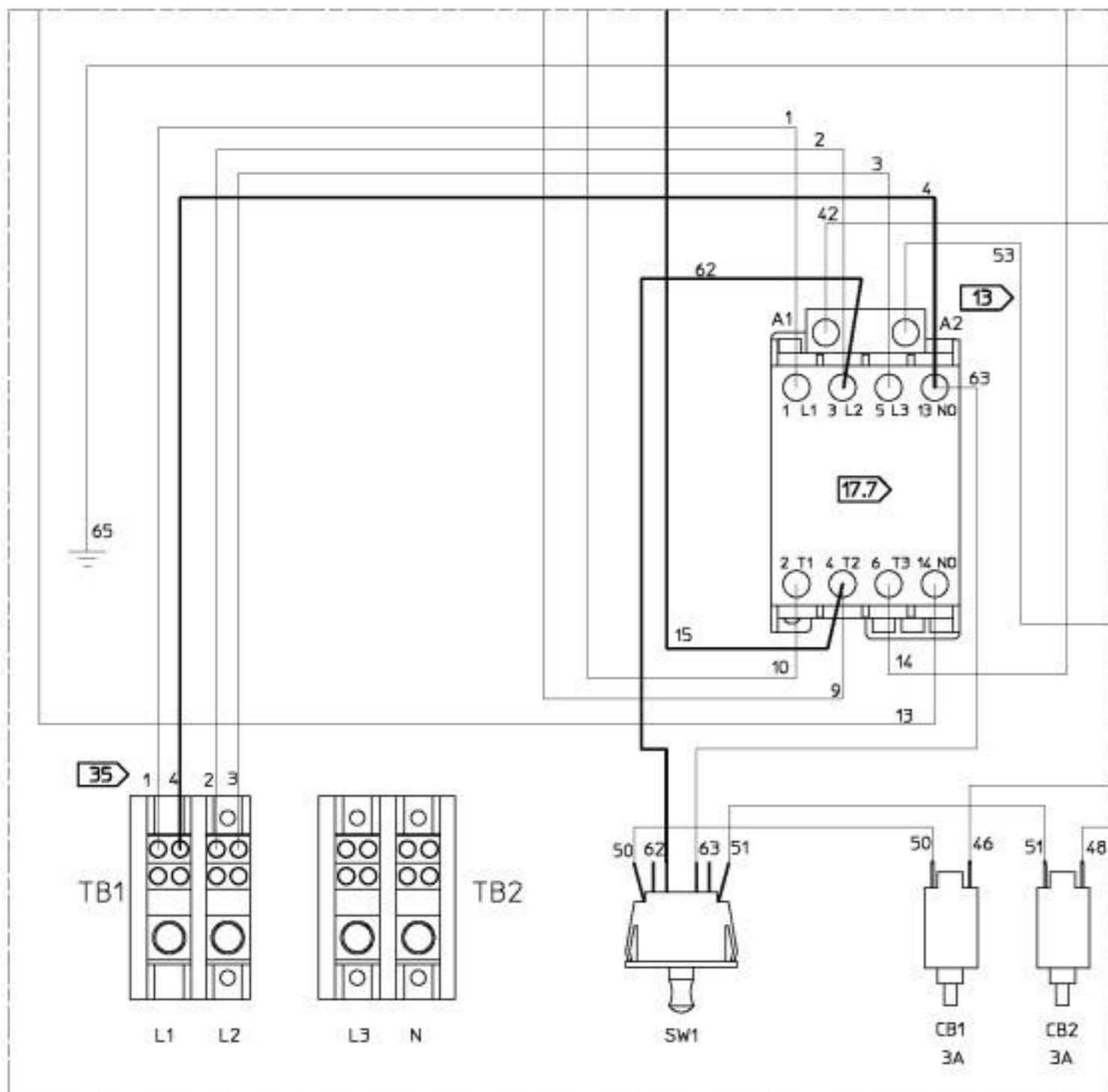


NOTES:
 ELECTRICAL TIGHTENING TORQUE VALUES ARE IN INCH_POUNDS AND ARE SHOWN IN SYMBOL  NEXT TO THE ELECTRICAL COMPONENT.

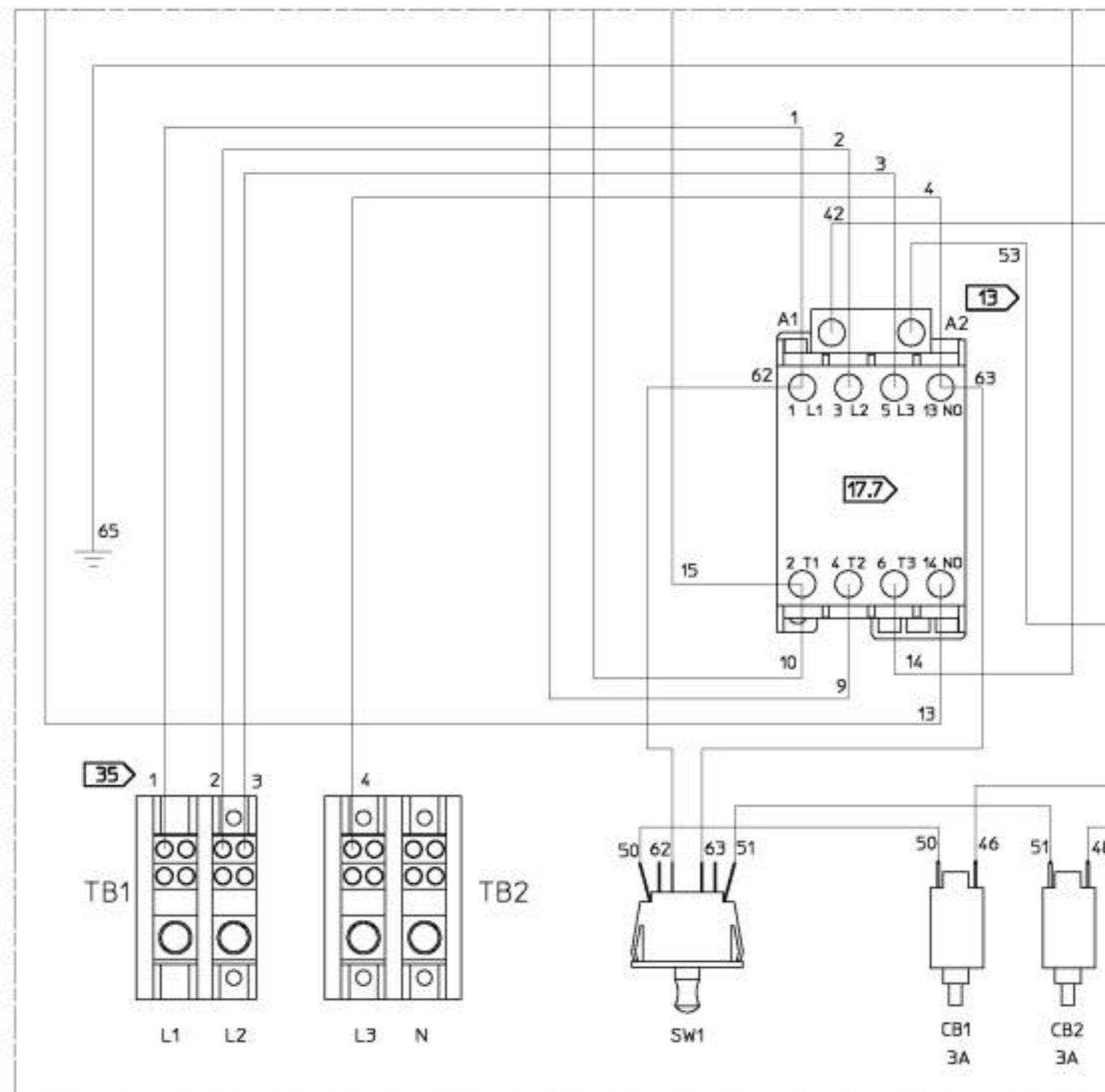
WD LABEL P/N 77319
 WIRE HARNESS P/N 77325 + 77326

| | | | | |
|---|------------|---|--|-----------------------|
| MATERIAL | GAUGE | TOLERANCE UNLESS SPECIFIED | THIS DRAWING IS CONFIDENTIAL AND PROPERTY OF THE MIDDLEBY CORPORATION 1400 Toastmaster Drive Elgin, Illinois 60120 847-741-3300 | |
| FINISH | | ANGLES ± 1.0° DEC .X ± .030 .XX ± .015 .XXX ± .005 | | |
| DRAWN NM | 11/11/2020 | CHECKED | | APPROVED |
| WD, DZ33T 380 CE 3PH NCC TCH | | | | |
| ALL DIMENSIONS ARE IN INCHES UNLESS OTHERWISE SPECIFIED. DO NOT SCALE DRAWING | | PART NO 77318 | SHT 1 OF 2 | REV B ₋ |

SINGLE PHASE



THREE PHASE



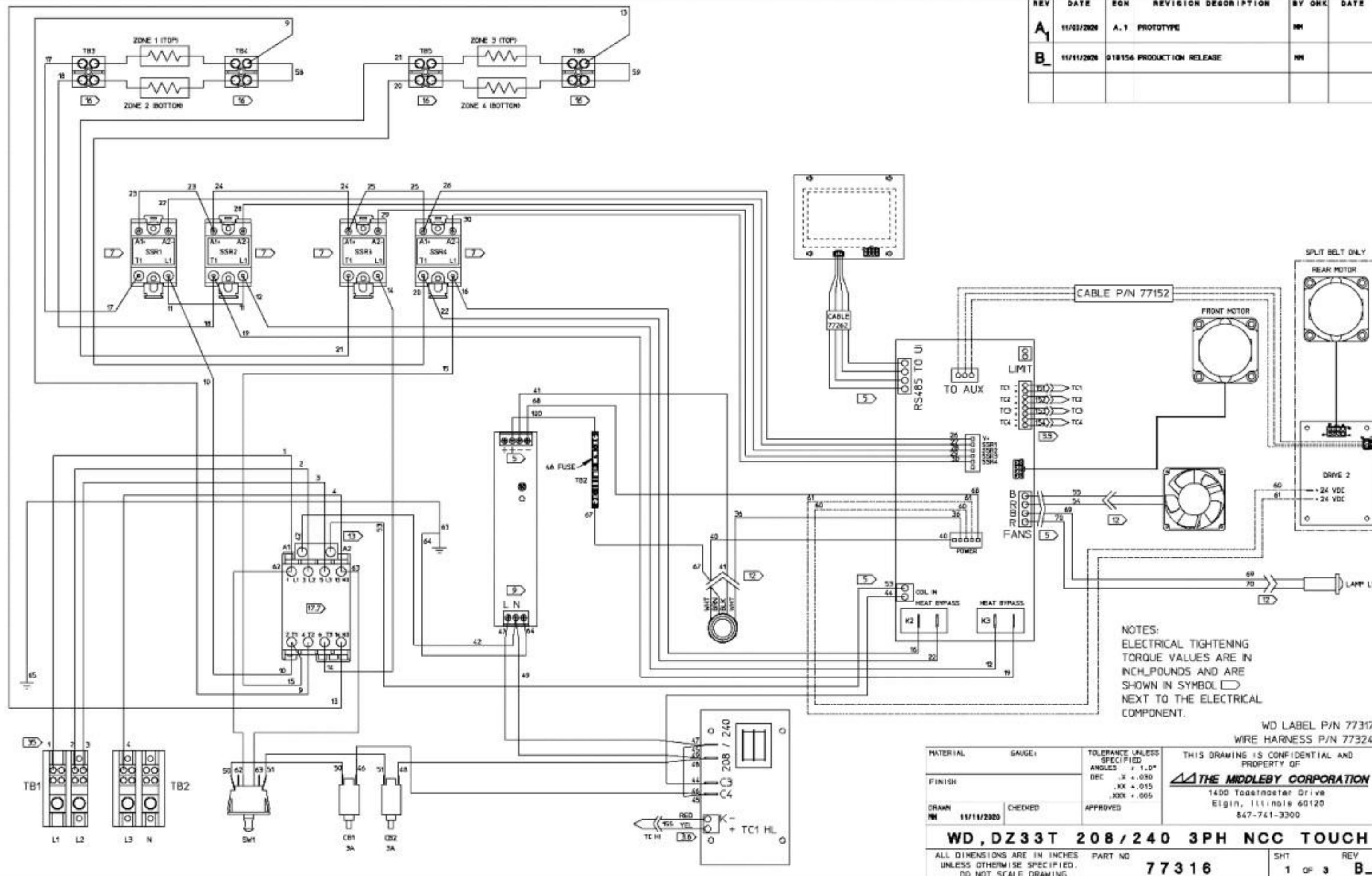
DIRECTIONS

TO CONVERT FROM THREE PHASE TO SINGLE PHASE

1. ON THE MAIN TERMINAL BLOCK IN THE REAR OF THE OVEN MOVE WIRE #4 FROM TB2 (L3) TO TB1 (L1).
2. ON THE CONTACTOR IN THE FRONT CONTROL COMPARTMENT MOVE WIRE #62 FROM CONTACTOR (1) TO CONTACTOR (3).
3. ON THE CONTACTOR IN THE FRONT CONTROL COMPARTMENT MOVE WIRE #15 FROM CONTACTOR (2) TO CONTACTOR (4).

| | | | |
|---|---------|---|--|
| MATERIAL | GAUGE: | TOLERANCE UNLESS SPECIFIED | THIS DRAWING IS CONFIDENTIAL AND PROPERTY OF THE MIDDLEBY CORPORATION 1400 Toastmaster Drive Elgin, Illinois 60120 847-741-3300 |
| FINISH | | ANGLES ± 1.0° DEC .X ± .030 .XX ± .015 .XXX ± .005 | |
| DRAWN PW | CHECKED | APPROVED | |
| WD, DZ33T 208/240 3PH NCC TOUCH | | | |
| ALL DIMENSIONS ARE IN INCHES UNLESS OTHERWISE SPECIFIED. DO NOT SCALE DRAWING | | PART NO 77316 | SHT 2 OF 3 |
| | | | REV B |

| REV | DATE | EGN | REVISION DESCRIPTION | BY | CHK | DATE |
|-----|------------|--------|----------------------|----|-----|------|
| A | 11/03/2020 | A.1 | PROTOTYPE | NN | | |
| B | 11/11/2020 | 018156 | PRODUCTION RELEASE | NN | | |



NOTES:
 ELECTRICAL TIGHTENING
 TORQUE VALUES ARE IN
 INCH-POUNDS AND ARE
 SHOWN IN SYMBOL □
 NEXT TO THE ELECTRICAL
 COMPONENT.

WD LABEL P/N 77317
 WIRE HARNESS P/N 77324

| | | | |
|---|------------|--|---|
| MATERIAL | GAUGE: | TOLERANCE UNLESS SPECIFIED | THIS DRAWING IS CONFIDENTIAL AND PROPERTY OF THE MIDDLEBY CORPORATION 1400 Teasdale Drive Elgin, Illinois 60120 847-741-3300 |
| FINISH | | ANGLES ± 1.0° | |
| DRAWN | CHECKED | DEC .X ± .030 .XX ± .015 .XXX ± .005 | |
| DATE | 11/11/2020 | APPROVED | |
| WD, DZ33T 208 / 240 3PH NCC TOUCH | | | |
| ALL DIMENSIONS ARE IN INCHES UNLESS OTHERWISE SPECIFIED. DO NOT SCALE DRAWING | | PART NO | SHT |
| | | 77316 | 1 OF 3 |
| | | | REV |
| | | | B |