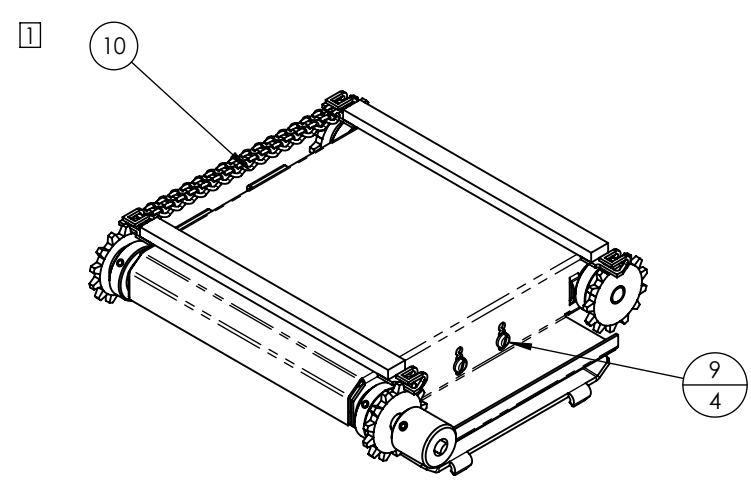
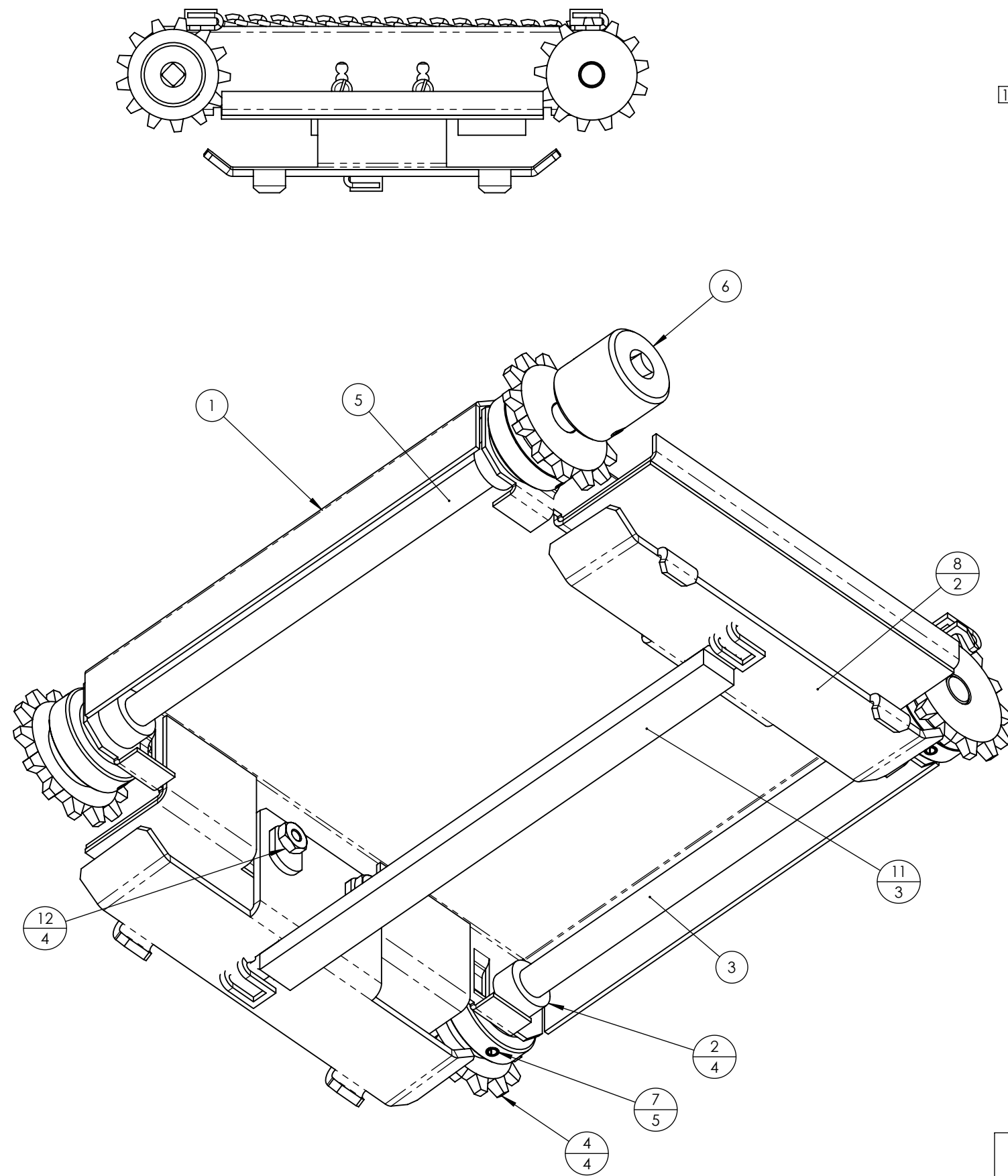

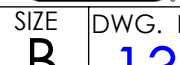


| REVISIONS |      |  |         |          |
|-----------|------|--|---------|----------|
| ZONE      | REV. | DESCRIPTION  | DATE    | APPROVED |
|           | A    | INITIAL RELEASE  | 1-7-03  | VS       |
|           | B    | DELETED RIVETS, SPRINGS & TENSIONERS<br>ADDED FIXED TENSIONER & SCREWS | 1-29-03 | VS       |
|           | C    | REVERSED CHAIN, REPLACED PUSH<br>BARS, ADDED JAM NUTS                  | 3-26-03 | VS       |



NOTES:  
 1- ITEM 10 TO BE ASSEMBLED IN 16 LINK SECTIONS BETWEEN INSTANCES OF ITEM 11. 5 PCS OMITTED FOR CLARITY  
 2- 6 X 16 = 96 LINKS PER DRIVE UNIT  
 96 X .353 = 2.824 INCHES CHAIN

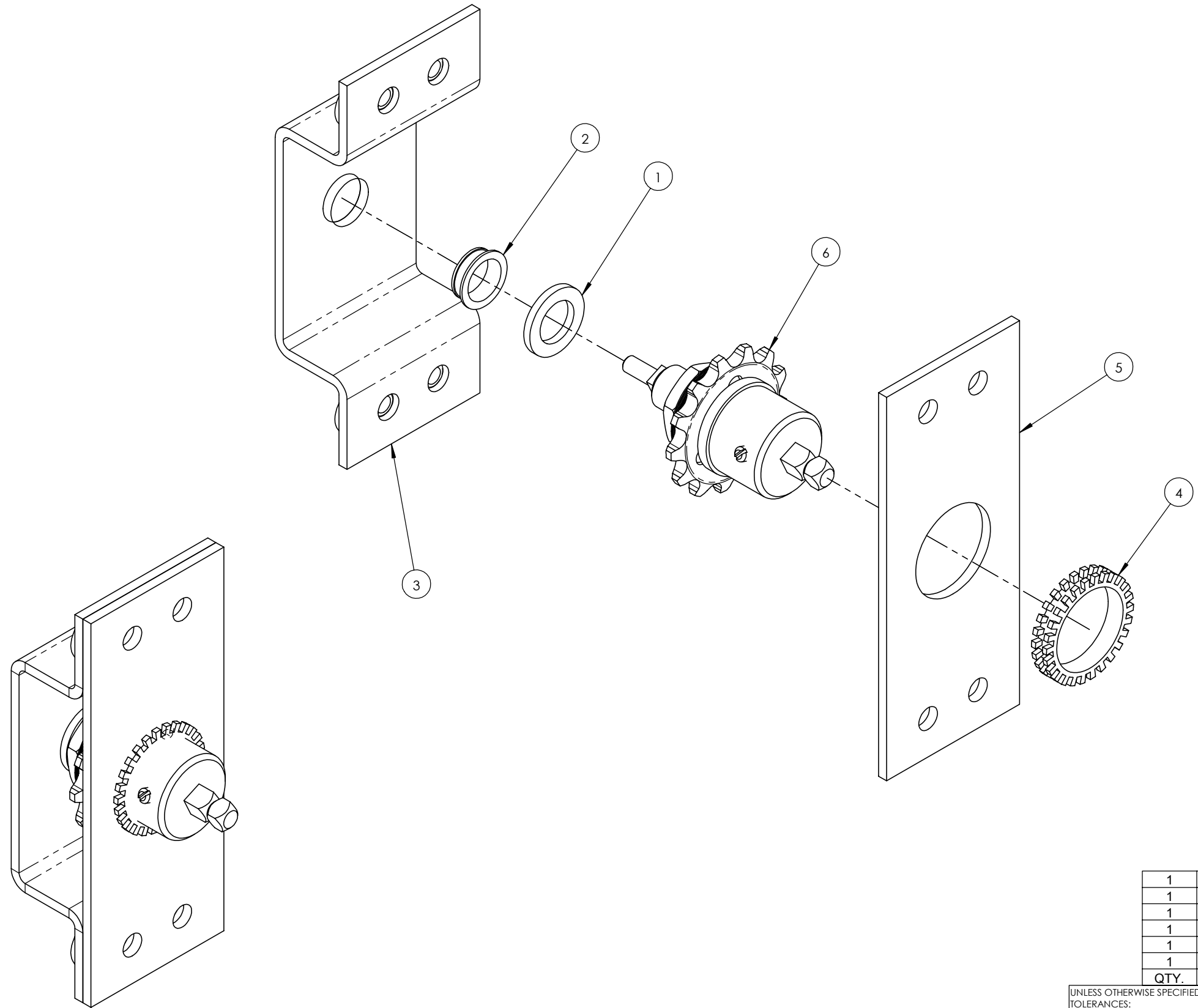
| QTY. | PART NO. | DESCRIPTION                                    | ITEM NO. |
|------|----------|--|----------|
| 4    | 5510     | NUT, HEX, SS, 8-32                             | 12       |
| 3    | 13859    | PUSH BAR, FEEDER, 1 LANE - WLDMT               | 11       |
| 1    | 11381    | CHAIN, LADDER, .353 PITCH                      | 10       |
| 4    | 5512     | SCREW, PAN HEAD, 8-32 X 3/8"                   | 9        |
| 2    | 13691    | TENSIONER, FIXED, LADDER CHAIN, 16 LINK        | 8        |
| 5    | 11114    | ROLL PIN, Ø1/8 X 1", SS                        | 7        |
| 1    | 11194    | COUPLER, DRIVE, 1/4" SQ X Ø3/8" ID             | 6        |
| 1    | 12291    | SHAFT, DRIVEN, FEEDER, SINGLE LANE, Ø3/8 X 9   | 5        |
| 4    | 11217    | SPROCKET, ROLLER CHAIN, 13T, Ø3/8 BORE         | 4        |
| 1    | 12292    | SHAFT, IDLER, FEEDER, SINGLE LANE, Ø3/8 X 8.22 | 3        |
| 4    | 11478    | BUSHING, FLANGED, Ø3/8" SHAFT, W/FLAT          | 2        |
| 1    | 13685    | PLATFORM, 7.5" - FEEDER, 5.65" SPACING - ASSY  | 1        |

|   |  |            |         |   |   |
|---|--|------------|---------|---|---|
| UNLESS OTHERWISE SPECIFIED DIMS ARE IN INCHES   |  | DATE       | NAME    | <br><small>(707) 284-7100<br/>         (707) 284-7430 FAX<br/>         WINDSOR, CA<br/>         95492-8594</small> | <small>THIS DOCUMENT IS THE PROPERTY OF<br/>         NIICO CORPORATION. REPRODUCTION<br/>         OR RELEASE WITHOUT EXPRESS<br/>         PERMISSION IS PROHIBITED.</small> |
| TOLERANCES:<br>FRACTIONAL ±1/32<br>ANGULAR: ±1°<br>TWO PLACE DECIMAL ±.02<br>THREE PLACE DECIMAL ±.01 |  | DRAWN      | 1-7-03  |   |   |
| MATERIAL  |  | CHECKED    | -       | -   | SIZE  |
| SEE PARTS LIST  |  | FINISH     | -       | -   | DWG. NO.  |
|   |  |            |         | <br><b>13689</b>   |   |
|   |  |            |         | REV   |   |
|   |  |            |         | <b>C</b>  |   |
| TITLE: DRIVE UNIT, FEEDER - 7.5" - ASSY   |  |            |         |   |   |
|   |  | SCALE: 1:2 | WEIGHT: | SHEET 1 OF 1  |   |

|                     |         |
|---------------------|---------|
| 12858, 13690, 11211 | 13640   |
| SIMILAR TO          | USED ON |
| APPLICATION         |         |

8 7 6 5 4 3 2 1

| REVISIONS |      |                 |        |          |
|-----------|------|-----------------|--------|----------|
| ZONE      | REV. | DESCRIPTION     | DATE   | APPROVED |
|           | A    | INITIAL RELEASE | 8-8-04 | DC       |



| QTY. | PART NO. | DESCRIPTION                                   | ITEM NO. |
|------|----------|---|----------|
| 1    | 14900    | SPROCKET, CLUTCHED, 13T, BELLEVILLE SPRING    | 6        |
| 1    | 14897    | PLATE, LARGE BEARING, FEEDER DRIVE            | 5        |
| 1    | 14896    | BEARING, SHOULDER WASHER, LARGE, FEEDER DRIVE | 4        |
| 1    | 10640    | BRACKET, BEARING, FEEDER DRIVE - WLDMT        | 3        |
| 1    | 10627    | BEARING CLIP, Ø1/2" ID, .12 THK               | 2        |
| 1    | 10275    | WASHER, THRUST, 1/2 ID, 13/16 OD, .090 THK    | 1        |

UNLESS OTHERWISE SPECIFIED DIMS ARE IN INCHES

|   |                   |            |  |   |  |
|---|-------------------|------------|--|---|--|
| TOLERANCES:<br>FRACTIONAL ±1/32<br>ANGULAR: ±1°<br>TWO PLACE DECIMAL ±.02<br>THREE PLACE DECIMAL ±.01 | DATE<br>8-3-04    | NAME<br>CJ |  | <small>(707) 284-7100<br/>(707) 284-7430 FAX<br/>WINDSOR, CA<br/>95492-8594</small> | <small>THIS DOCUMENT IS THE PROPERTY OF<br/>NIECO CORPORATION. REPRODUCTION<br/>OR RELEASE WITHOUT EXPRESS<br/>PERMISSION IS PROHIBITED.</small> |
| MATERIAL<br>SEE PARTS LIST  | CHECKED<br>8-8-04 | DC         |  |   |  |

TITLE: FEEDER DRIVE, COMBO CLUTCH - ASSY

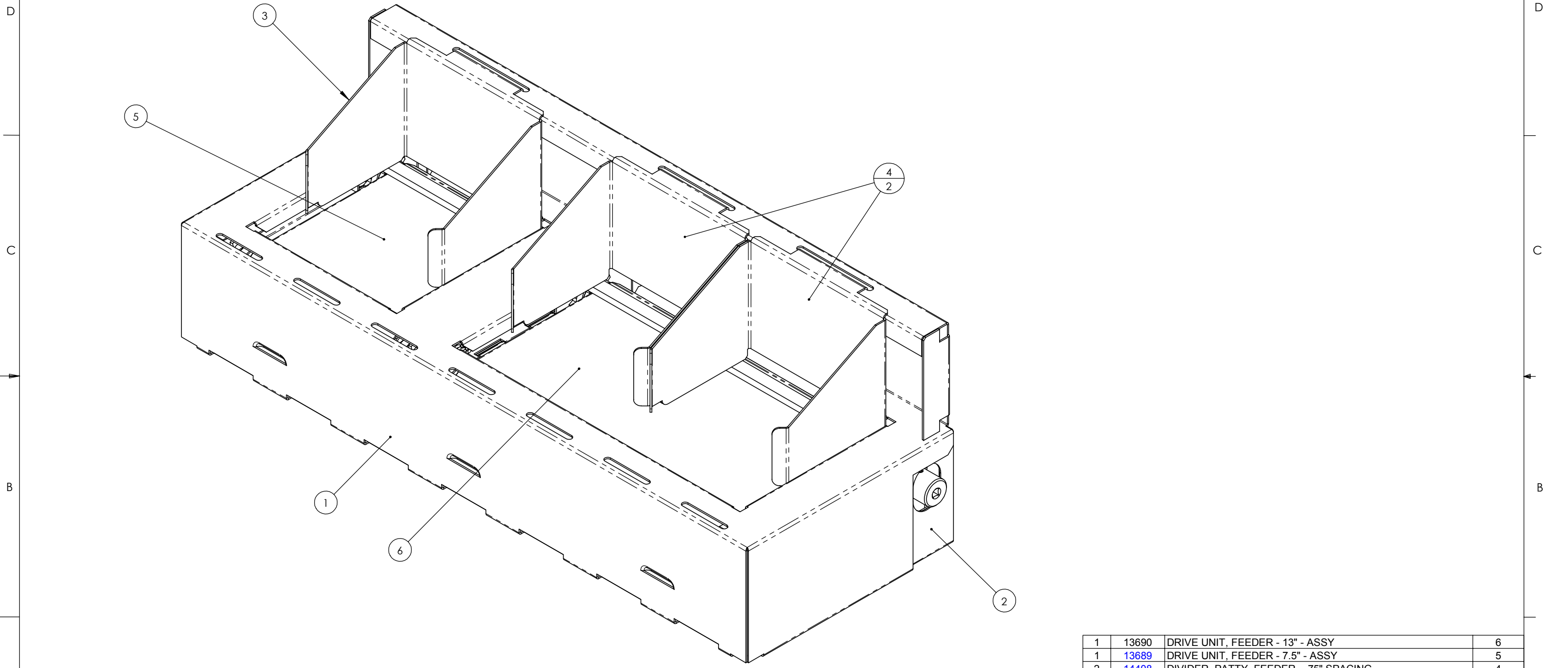
|            |               |              |
|------------|---------------|--------------|
| SCALE: 1:1 | WEIGHT: 0.794 | SHEET 1 OF 1 |
|------------|---------------|--------------|

|             |                         |                |
|-------------|-------------------------|----------------|
| 14297       | 14170<br>14300<br>14507 | 14635<br>14680 |
| SIMILAR TO  | USED ON                 |                |
| APPLICATION |                         |                |

8 7 6 5 4 3 2 1

8 7 6 5 4 3 2 1

| REVISIONS |      |                 |         |          |
|-----------|------|-----------------|---------|----------|
| ZONE      | REV. | DESCRIPTION     | DATE    | APPROVED |
|           | A    | INITIAL RELEASE | 7-29-04 | DC       |



| QTY. | PART NO. | DESCRIPTION                                    | ITEM NO. |
|------|----------|--|----------|
| 1    | 13690    | DRIVE UNIT, FEEDER - 13" - ASSY                | 6        |
| 1    | 13689    | DRIVE UNIT, FEEDER - 7.5" - ASSY               | 5        |
| 2    | 14408    | DIVIDER, PATTY, FEEDER - .75" SPACING          | 4        |
| 1    | 14407    | DIVIDER, PATTY, FEEDER - .50" SPACING          | 3        |
| 1    | 14314    | ENCLOSURE, FEEDER, PUSHBAR, 1 & 2 LANE - WLDMT | 2        |
| 1    | 14304    | COVER, FEEDER, PUSH BAR, 1 & 2 LANE            | 1        |

UNLESS OTHERWISE SPECIFIED DIMS ARE IN INCHES

|                          |         |         |    |
|--------------------------|---------|---------|----|
| DATE                     | 7-29-04 | NAME    | DC |
| DRAWN                    | 7-29-04 | CHECKED | DC |
| TOLERANCES:              |         | FINISH  |    |
| FRACTIONAL ±1/32         |         | ---     |    |
| ANGULAR: ±1°             |         | ----    |    |
| TWO PLACE DECIMAL ±.02   |         |         |    |
| THREE PLACE DECIMAL ±.01 |         |         |    |

**niECO** (707) 284-7100 (707) 284-7430 FAX WINDSOR, CA 95492-8594

THIS DOCUMENT IS THE PROPERTY OF niECO CORPORATION. REPRODUCTION OR RELEASE WITHOUT EXPRESS PERMISSION IS PROHIBITED.

SIZE **B** DWG. NO. **15701** REV **A**

TITLE: FEEDER, PUSH BAR, 1 & 2 LANE, .50 & .75 GAP - ASSY

SCALE: 1:2 WEIGHT: SHEET 1 OF 1

|             |         |
|-------------|---------|
| 14311       | -       |
| SIMILAR TO  | USED ON |
| APPLICATION |         |

8 7 6 5 4 3 2 1

8

7

6

5

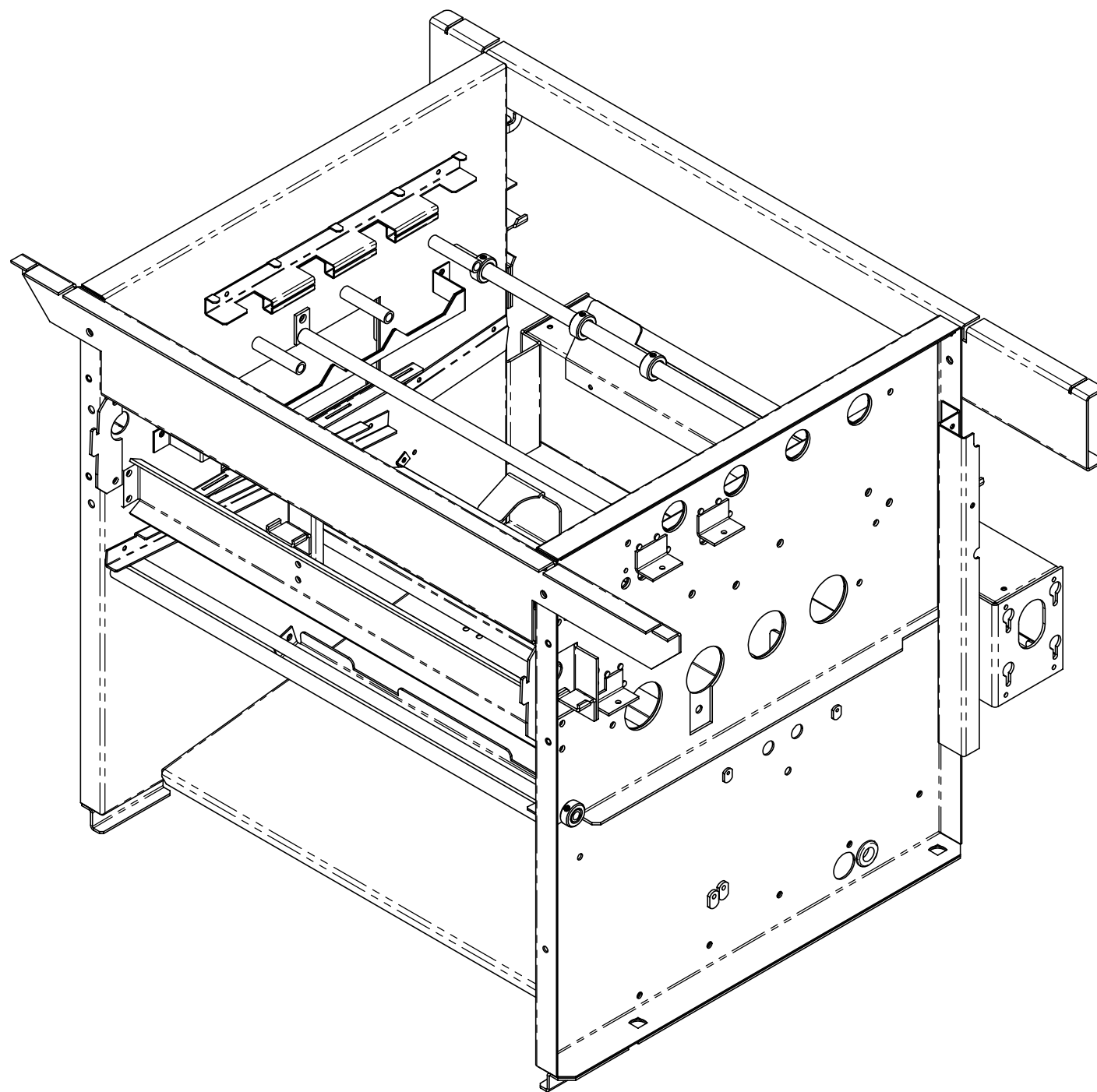
4

3


2

1

| REVISIONS |      |                 |         |          |
|-----------|------|-----------------|---------|----------|
| ZONE      | REV. | DESCRIPTION     | DATE    | APPROVED |
|           | A    | INITIAL RELEASE | 7-26-04 | DC       |



| QTY. | PART NO. | DESCRIPTION  | ITEM NO. |
|------|----------|--|----------|
| 1    | 14427    | SUPPORT, 4 BURNER SHIELD - 3.5 CENTERS - WLDMT             | 26       |
| 1    | 14424    | SUPPORT W/CARRYOVER, 4 BURNER SHIELD - 3.5 CENTERS - WLDMT | 25       |
| 1    | 14138    | BRACE, SUPPORT, CENTER BEARING                             | 24       |
| 1    | 14137    | BRACKET,SUPPORT, CENTER BEARING, INNER - WLDMT             | 23       |
| 2    | 14131    | BRACKET, FEEDER SUPPORT                                    | 22       |
| 1    | 13977    | CHAIN GUARD BASE, RIGHT INNER - WLDMT                      | 21       |
| 1    | 13975    | CHAIN GUARD BASE, LEFT INNER - WLDMT                       | 20       |
| 1    | 13931    | ENCLOSURE, DUAL MOTOR, 24.5" FRAME - WLDMT                 | 19       |
| 1    | 13920    | SUPPORT, PATTY CATCH PAN, 3 LANE                           | 18       |
| 1    | 13916    | MOTOR MOUNT, RIGHT   | 17       |
| 1    | 13915    | MOTOR MOUNT, LEFT  | 16       |
| 1    | 13906    | SHIELD, REFLECTOR, WARMER, 24.5" FRAME                     | 15       |
| 1    | 13902    | ROD, OFFSET, 24.5" FRAME - WLDMT                           | 14       |
| 1    | 13775    | BRACKET, SPACER, 3.18", SIDE PANEL                         | 13       |
| 2    | 10984    | BRACKET, STRIPPER, BLADE MOUNT - ASSY                      | 12       |
| 2    | 6726     | SET COLLAR, Ø.56 BORE, ZINC PLATED                         | 11       |
| 4    | 6089     | ROD, SUPPORT, Ø5/8   | 10       |
| 4    | 6028     | COLLAR, SET, Ø5/8 BORE                                     | 9        |
| 1    | 5820     | GROMMET, 3/4" RUBBER                                       | 8        |
| 1    | 4434-06  | PIPE, PLATEN WIRES   | 7        |
| 6    | 4048     | SUPPORT, BELT  | 6        |
| 1    | 14135    | BRACKET, UPPER FRAME, DUAL PROBE ENCLOSURE - WLDMT         | 5        |
| 1    | 13834    | BRACKET, UPPER FRAME W/HOOKS, DISCHARE END, 24.5" FRAME    | 4        |
| 1    | 15705    | SIDEPLATE, RIGHT, N750BYB - WLDMT                          | 3        |
| 1    | 14163    | SIDEPLATE, LEFT, 4 BURNER, 3.5 CENTERS - 23 X 25.5 - WLDMT | 2        |
| 1    | 13924    | BASE PLATE, 19 X 24.5" FRAME - WLDMT                       | 1        |

|   |  |                                 |       |   |  |
|---|--|---------------------------------|-------|---|--|
| UNLESS OTHERWISE SPECIFIED DIMS ARE IN INCHES |  | DATE                            | NAME  |  <small>(707) 284-7100<br/>(707) 284-7430 FAX<br/>WINDSOR, CA<br/>95492-8594</small> | <small>THIS DOCUMENT IS THE PROPERTY OF<br/>NIECO CORPORATION. REPRODUCTION<br/>OR RELEASE WITHOUT EXPRESS<br/>PERMISSION IS PROHIBITED.</small> |
| TOLERANCES:                                   |  | DRAWN                           | DC    |   |  |
| FRACTIONAL ±1/32                              |  | CHECKED                         | DC    |   |  |
| ANGULAR: ±1°                                  |  | FINISH                          | ----- |   |  |
| TWO PLACE DECIMAL ±.02                        |  | SEE PARTS LIST                  |       | SIZE  | DWG. NO.   |
| THREE PLACE DECIMAL ±.01                      |  | TITLE: FRAME ASSEMBLY - N750BYB |       | B   | 15700  |
| MATERIAL                                      |  | SCALE: 1:2                      |       | REV   | A  |
| APPLICATION                                   |  | WEIGHT: 121.82                  |       | SHEET 1 OF 2  |  |

|             |         |
|-------------|---------|
| 14121       | -       |
| SIMILAR TO  | USED ON |
| APPLICATION |         |

8

7

6

5

4

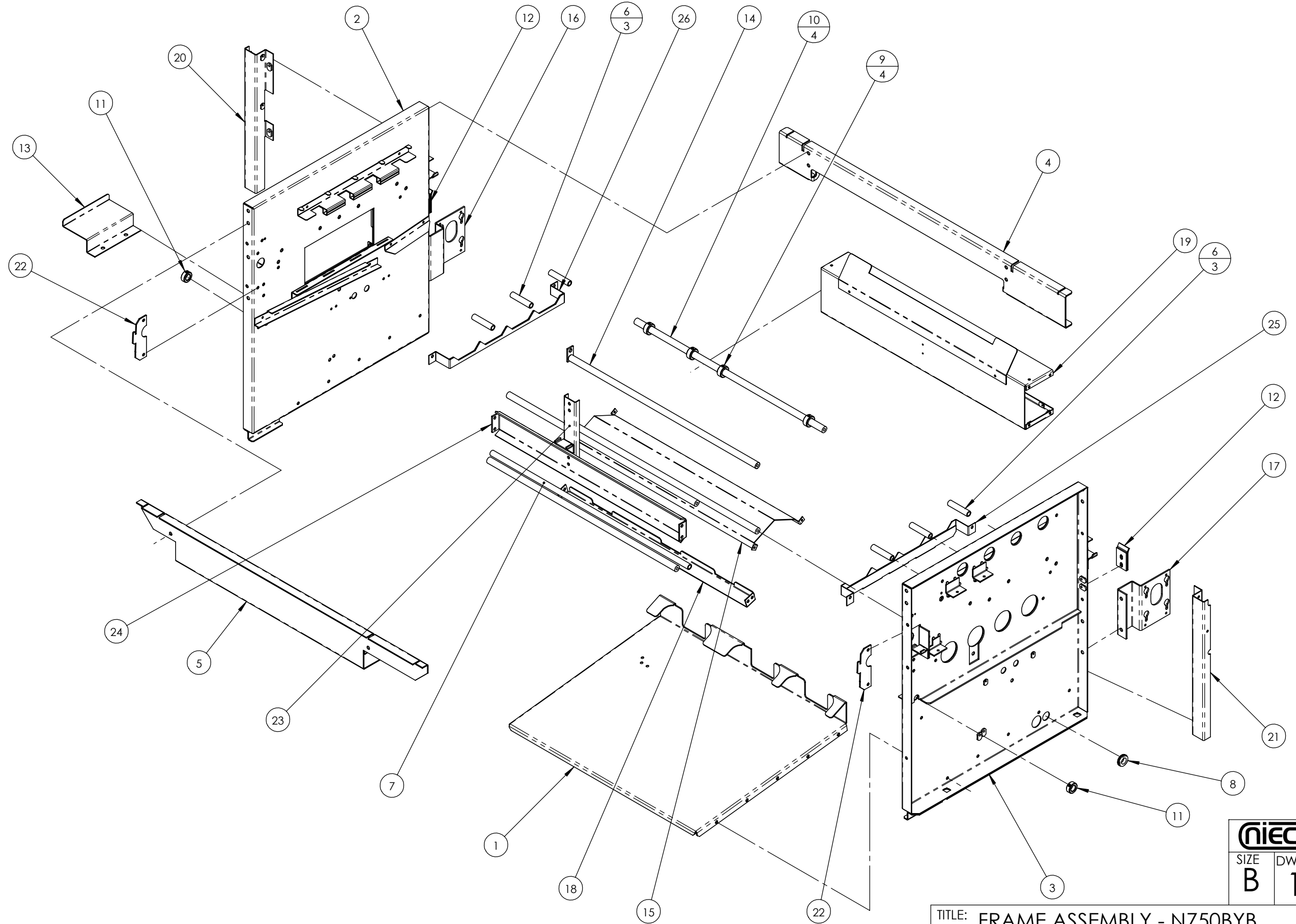
3

2

1

8 7 6 5 4 3 2 1

D  
C  
B  
A



**nioco** (707) 284-7100  
 (707) 284-7430 FAX  
 WINDSOR, CA 95492-8594

THIS DOCUMENT IS THE PROPERTY OF  
 NIICO CORPORATION. REPRODUCTION  
 OR RELEASE WITHOUT EXPRESS  
 PERMISSION IS PROHIBITED.

|                  |                          |                 |
|------------------|--------------------------|-----------------|
| SIZE<br><b>B</b> | DWG. NO.<br><b>15700</b> | REV<br><b>A</b> |
|------------------|--------------------------|-----------------|

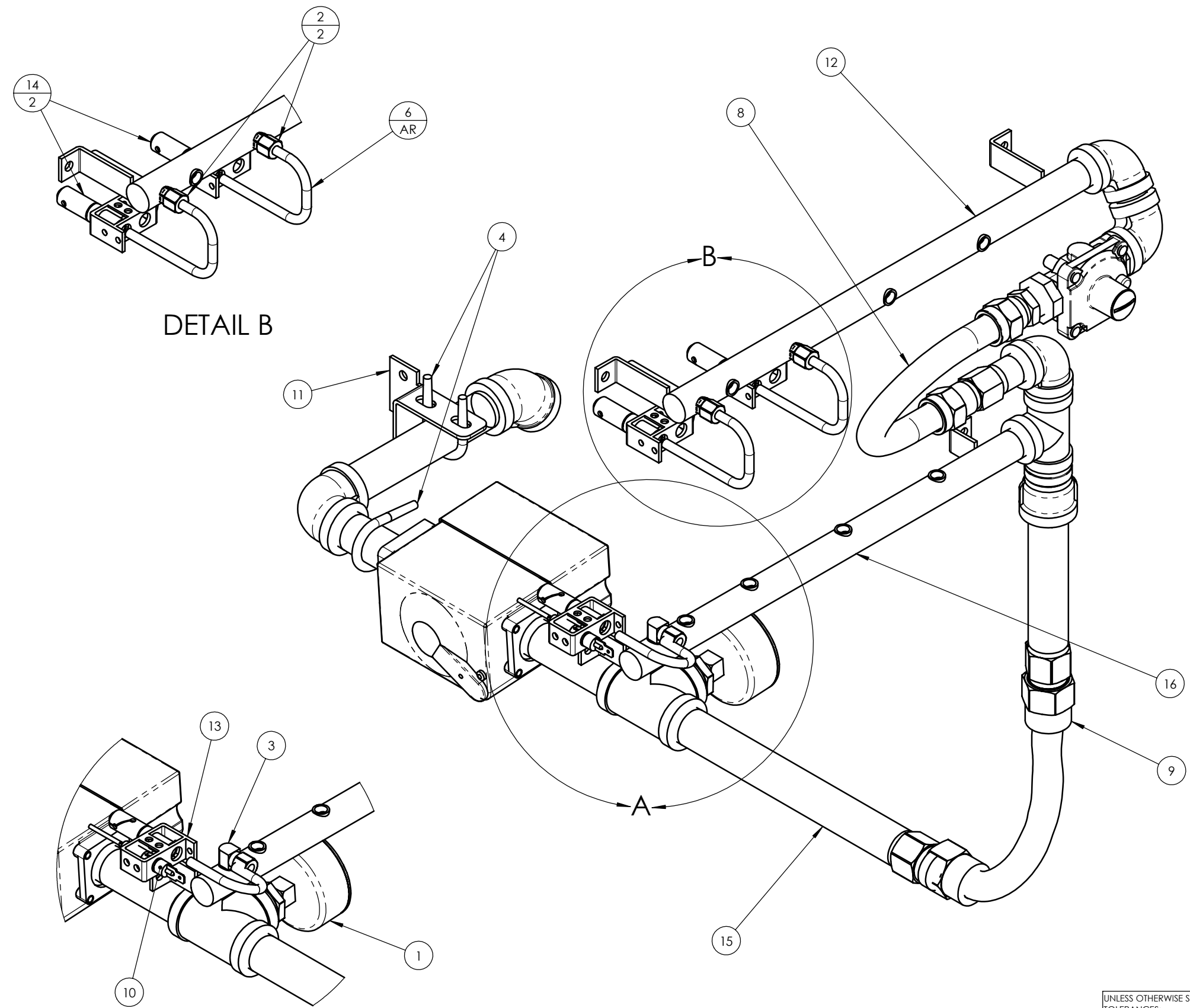
TITLE: **FRAME ASSEMBLY - N750BYB**

SCALE: 1:2    WEIGHT: 121.82    SHEET 2 OF 2

8 7 6 5 4 3 2 1



| REVISIONS |      |   |          |          |
|-----------|------|---|----------|----------|
| ZONE      | REV. | DESCRIPTION   | DATE     | APPROVED |
|           | A    | INITIAL RELEASE   | 10-23-03 | PB       |
|           | B    | ITEM 2 WAS QTY 1<br>ITEM 14 WAS QTY 1<br>ITEM 9, 12 & 16 REVISED      | 12-4-03  | DC       |
|           | C    | RELOCATED ITEMS 5 & 7, ADDED SH 2                                     | 3-30-04  | DC       |
|           | D    | ITEM 13 REPLACED. WAS P/N 14428.                                      | 6-30-04  | DC       |
|           | E    | 1 - ITEM 1 REPLACED. WAS P/N 2001.<br>2 - ITEM 4 QTY CHANGED. WAS 1X. | 8-2-05   | DC       |
|           | F    | ITEM 10 REPLACED. WAS P/N 13814                                       | 11-18-05 | DC       |



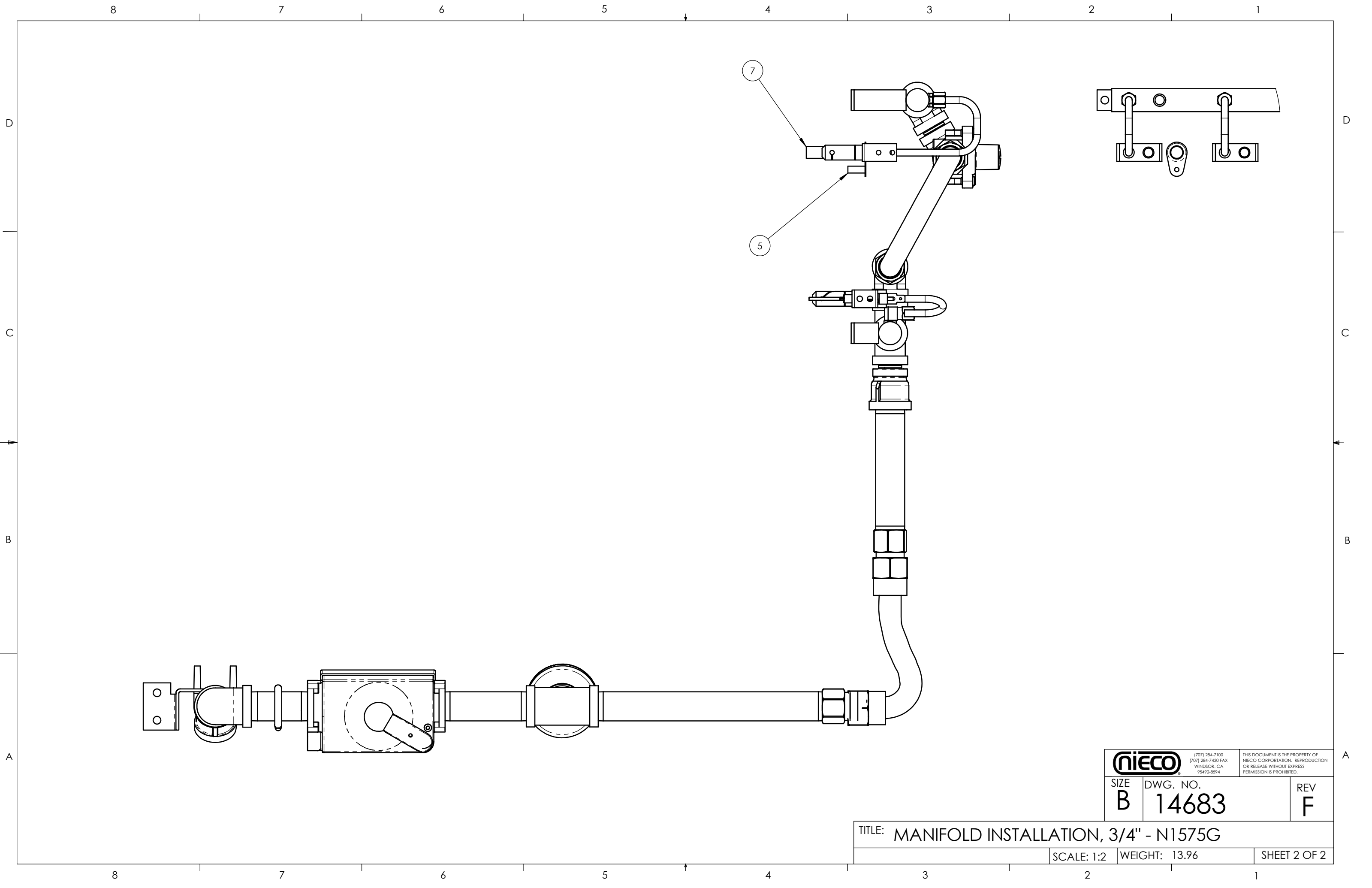
DETAIL B

DETAIL A

| QTY. | PART NO. | DESCRIPTION   | ITEM NO. |
|------|----------|---|----------|
| 1    | 14682    | MANIFOLD, 4 BURNER - 3.5 CENTERS, 1" OFFSET, 3/4", ASSY | 16       |
| 1    | 14681    | MANIFOLD, LOWER, 3/4" - SUB ASSY                        | 15       |
| 2    | 14429    | BURNER, PILOT, CARRYOVER, INVERTED                      | 14       |
| 1    | 14119    | BURNER, PILOT (MODIFIED #2179)                          | 13       |
| 1    | 14310    | MANIFOLD, 4 BURNER-3.5 CENTERS, 2" OFFSET, ASSY         | 12       |
| 1    | 13989    | BRACKET, MANIFOLD SUPPORT                               | 11       |
| 1    | 16857    | PROBE, FLAME SENSING, SNAP IN                           | 10       |
| 1    | 13048    | CONNECTOR, GAS, FLEXIBLE, 3/4 X 10"                     | 9        |
| 1    | 13047    | CONNECTOR, GAS, FLEXIBLE, 1/2" X 10"                    | 8        |
| 1    | 10291    | IGNITER, HOT SURFACE, 24V                               | 7        |
| 1    | 9519     | TUBING, 1/4", BUNDYWELD                                 | 6        |
| 1    | 8421-02  | SPACER, 1/4" OD, 3/16" ID, 5/8" LONG, SS                | 5        |
| 2    | 5667     | U-BOLT, 1/4-20 X 1-1/8 X 2"                             | 4        |
| 1    | 5663     | ELBOW, BRASS, MALE (69 X 4)                             | 3        |
| 2    | 5662     | CONNECTOR, BRASS MALE (68 X 4)                          | 2        |
| 1    | 16036    | GAUGE, GAS, 1% ACCURACY, 0-15"                          | 1        |

UNLESS OTHERWISE SPECIFIED DIMS ARE IN INCHES

|             |        |   |  |               |
|-------------|--------|---|--|---------------|
| DATE        | NAME   | <br><small>(707) 284-7100<br/>(707) 284-7430 FAX<br/>WINDSOR, CA<br/>95492-8594</small> | <small>THIS DOCUMENT IS THE PROPERTY OF<br/>NIECO CORPORATION. REPRODUCTION<br/>OR RELEASE WITHOUT EXPRESS<br/>PERMISSION IS PROHIBITED.</small> |               |
| DRAWN       | CJ     |   |  |               |
| DATE        | NAME   | SIZE  | DWG. NO.   | REV           |
| CHECKED     | PB     | B   | 14683  | F             |
| MATERIAL    | FINISH | SEE PARTS LIST  |  |               |
| 14122       |        | TITLE: MANIFOLD INSTALLATION, 3/4" - N1575G   |  |               |
| SIMILAR TO  |        | SCALE: 1:2  |  | WEIGHT: 13.96 |
| USED ON     |        | SHEET 1 OF 2  |  |               |
| APPLICATION |        |   |  |               |



(707) 284-7100  
 (707) 284-7430 FAX  
 WINDSOR, CA  
 95492-8594

THIS DOCUMENT IS THE PROPERTY OF  
 NIECO CORPORATION. REPRODUCTION  
 OR RELEASE WITHOUT EXPRESS  
 PERMISSION IS PROHIBITED.

|                  |                          |                 |
|------------------|--------------------------|-----------------|
| SIZE<br><b>B</b> | DWG. NO.<br><b>14683</b> | REV<br><b>F</b> |
|------------------|--------------------------|-----------------|

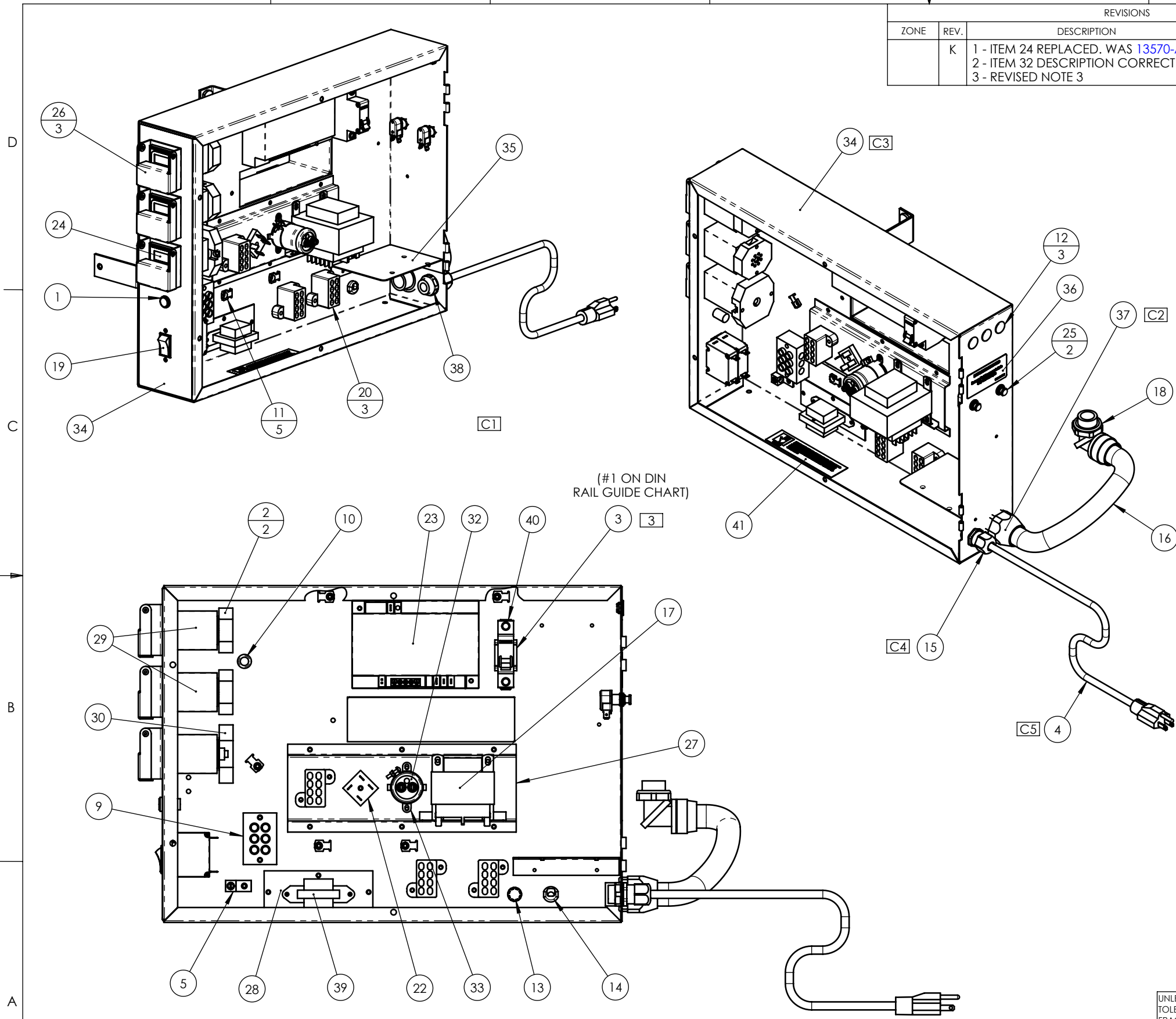
TITLE: MANIFOLD INSTALLATION, 3/4" - N1575G

|            |               |              |
|------------|---------------|--------------|
| SCALE: 1:2 | WEIGHT: 13.96 | SHEET 2 OF 2 |
|------------|---------------|--------------|

8 7 6 5 4 3 2 1

| REVISIONS |      |  |         |          |
|-----------|------|--|---------|----------|
| ZONE      | REV. | DESCRIPTION  | DATE    | APPROVED |
|           | K    | 1 - ITEM 24 REPLACED. WAS 13570-A.<br>2 - ITEM 32 DESCRIPTION CORRECTED.<br>3 - REVISED NOTE 3 | 4-10-06 | DC       |


| REVISIONS                      |      |   |          |          |
|--------------------------------|------|---|----------|----------|
| ZONE                           | REV. | DESCRIPTION   | DATE     | APPROVED |
|                                | A    | INITIAL RELEASE   | 7-8-03   | DC       |
| 5B                             | B    | RELOCATE ITEM 15  | 9/25/03  | PB       |
| 7C<br>4C<br>5D<br>4B<br>4B,G/N | C    | ADD ITEM 38<br>ADD ITEM 37<br>UPDATE ITEM 34 TO LATEST REV<br>ITEM 15 WAS P/N 5812 IS P/N 5833<br>SHOW ITEM 4 / DELETE NOTE 1 | 10/1/03  | PB       |
|                                | D    | 1-DELETED ITEM 6.<br>2-ITEM 31 REPLACED. WAS P/N 13771.<br>3-ITEM 26 REPLACED. WAS P/N 13625.                                 | 5-14-04  | DC       |
|                                | E    | 1-ITEM 24 REPLACED. WAS P/N 13570.<br>2-ADDED ITEM 39.  | 10-19-04 | DC       |
|                                | F    | 1-ITEM 31 REPLACED. WAS P/N 15364.<br>2-ITEM 11 QTY CHANGED. WAS 4X.<br>3-ADDED ITEM 40.                                      | 12-9-04  | DC       |
| 5C                             | G    | ADDED ITEM 41.  | 1-12-05  | PB       |
|                                | H    | ITEM 31 REPLACED. WAS 15522   | 12-5-05  | DC       |
|                                | J    | ITEM 23 REPLACED. WAS 12990.  | 1-31-06  | DC       |



(#1 ON DIN RAIL GUIDE CHART)

| QTY. | PART NO.  | DESCRIPTION                                     | ITEM NO. |
|------|-----------|---|----------|
| 1    | 5081      | STICKER, "POWER CONNECTIONS"                    | 41       |
| 1    | 11965     | CIRCUIT BREAKER, 20A                            | 40       |
| 1    | 16031     | TRANSFORMER, 120V PRI, 24V SEC, 5VA             | 39       |
| 1    | 5830      | JAM NUT, 1/2 NPT, LIQUID TIGHT FITTING (5833)   | 38       |
| 1    | 5818      | FITTING, FLEX CONDUIT, Ø3/4" STRAIGHT           | 37       |
| 1    | 14021     | LABEL, BELT REVERSE BUTTONS, 1.50" X 3.0"       | 36       |
| 1    | 14016     | BRACKET, SPARE PARTS, 2 BELT N SERIES           | 35       |
| 1    | 14014     | ENCLOSURE, CONTROL BOX, 2 BELT N SERIES - WLDMT | 34       |
| 1    | 13795     | BRACKET, CAPACITOR, Ø1-3/8"                     | 33       |
| 1    | 13794     | CAPACITOR, 4700µF, 40 WVDC                      | 32       |
| 1    | 15264     | LABEL, CONTROL BOX, 2 BELT, N SERIES, BLACK     | 31       |
| 1    | 13737     | SOCKET BASE, 11 PIN                             | 30       |
| 2    | 13727     | CONTROL, BRUSHLESS MOTOR                        | 29       |
| 1    | 13669     | PLATE, ACCESS COVER                             | 28       |
| 1    | 13668     | BRACKET, MODULAR POWER, CONTROL BOX             | 27       |
| 3    | 15328     | COVER, GUARD, DIN CONTROL - ASSY                | 26       |
| 2    | 13579     | SWITCH, MOTOR REVERSING                         | 25       |
| 1    | 13570-B   | CONTROL, LOAD SENSING, 1/16 DIN, 24V            | 24       |
| 1    | 16921     | CONTROL, IGNITION, 24V                          | 23       |
| 1    | 12725     | RECTIFIER, SINGLE PHASE BRIDGE, 25A, 200V       | 22       |
| 3    | 12715     | FUSE HOLDER, INLINE                             | 21       |
| 3    | 12589     | BLOCK, POWER DISTRIBUTION, 8 SPADE CONNECTIONS  | 20       |
| 1    | 12364     | SWITCH, ON OFF, 30A, 2 POLE                     | 19       |
| 1    | 10846     | FITTING, FLEX CONDUIT, 3/4 SWIVEL               | 18       |
| 1    | 10529     | TRANSFORMER, 240VAC INPUT, 24 VAC OUTPUT        | 17       |
| 1    | 5821      | CONDUIT, FLEXIBLE, 3/4"                         | 16       |
| 1    | 5833      | FITTING, LIQUID TIGHT, 1/2 NPT                  | 15       |
| 1    | 5696      | BUSHING, STRAIN RELIEF, 5/8" MOUNTING HOLE      | 14       |
| 1    | 5682-05   | PLUG, HOLE, SNAP IN, 5/8"                       | 13       |
| 3    | 5682-04   | PLUG, HOLE, SNAP IN, 1/2"                       | 12       |
| 5    | 5674      | OP MOUNTING PLATE, TY-RAP                       | 11       |
| 1    | 5670      | GROMMET, 3/8", RUBBER                           | 10       |
| 1    | 4622      | BLOCK, TERMINAL, 3 POLE, 90A, 600V              | 9        |
| 2    | 4621-02   | FUSE, 2 AMP                                     | 8        |
| 4    | 4621-0050 | FUSE, .5 AMP                                    | 7        |
| 1    | 4401      | INDICATOR LIGHT, AMBER, 28V                     | 6        |
| 1    | 4224-1    | GROUND LUG GAS BROILERS (#TA-2)                 | 5        |
| 1    | 4207      | POWER CORD, 7 FT                                | 4        |
| 3    | 4159-1    | RAIL, DIN                                       | 3        |
| 2    | 4136      | SCR BASE  | 2        |
| 1    | 4100      | LIGHT, RED W/WIRES, MAIN (250V)                 | 1        |

NOTE:  
 1 - SEE WIRING DIAGRAM 14208 FOR LOCATION OF ITEMS 7, 8, & 21  
 2 - QTY 1 OF ITEM 8 AND QTY 2 OF ITEM 7 TO BE PLACED IN CONTROL BOX AS SPARES.  
 3 - CUT 1 LENGTH OF ITEM 3 TO APPROX. DIMENSION

|   |  |             |      |  |  |
|---|--|-------------|------|--|--|
| UNLESS OTHERWISE SPECIFIED DIMS ARE IN INCHES   |  | DATE        | NAME | <br><small>(707) 284-7100<br/>(707) 284-7430 FAX<br/>WINDSOR, CA<br/>95492-8594</small> | <small>THIS DOCUMENT IS THE PROPERTY OF<br/>NIECO CORPORATION. REPRODUCTION<br/>OR RELEASE WITHOUT EXPRESS<br/>PERMISSION IS PROHIBITED.</small> |
| TOLERANCES:<br>FRACTIONAL ±1/32<br>ANGULAR: ±1°<br>TWO PLACE DECIMAL ±.02<br>THREE PLACE DECIMAL ±.01 |  | 6-27-03     | CJ   |  |  |
| MATERIAL  |  | CHECKED     | DC   | SIZE   | REV  |
| SEE PARTS LIST  |  | FINISH      |      | B  | K  |
| TITLE: CONTROL BOX, 2 BELT N, 115 V, RF - ASSY  |  | SCALE: 1:2  |      | WEIGHT: 26.10  |  |
| SHEET 1 OF 1  |  | APPLICATION |      | SHEET 1 OF 1   |  |

8 7 6 5 4 3 2 1



8

7

6

5

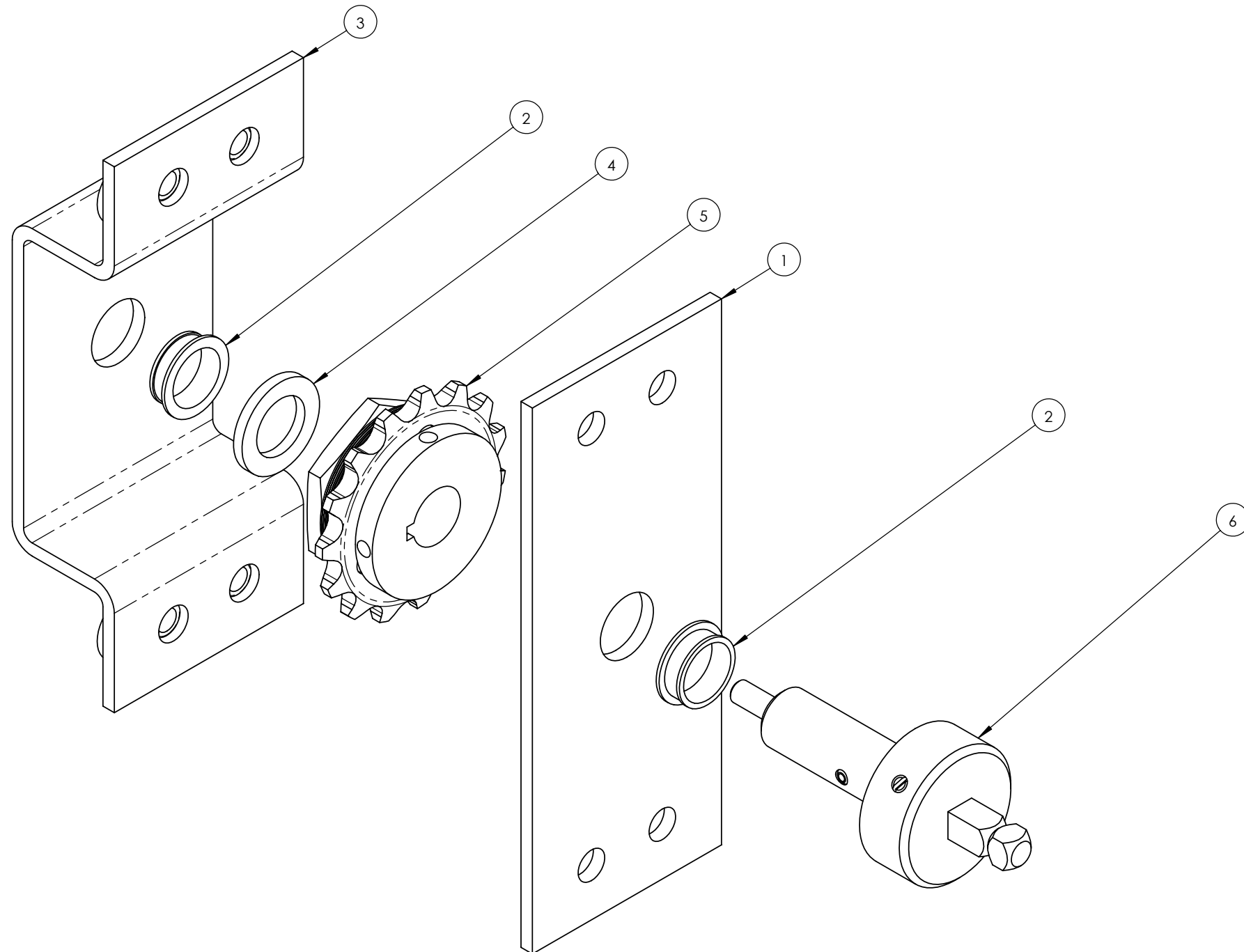
4

3

2

1

| REVISIONS |      |                  |          |          |
|-----------|------|------------------|----------|----------|
| ZONE      | REV. | DESCRIPTION      | DATE     | APPROVED |
|           | A    | INITIAL RELEASE  | 10-16-03 | VS       |
|           | B    | ITEM 4 QTY WAS 2 | 10-29-03 | VS       |



| QTY. | PART NO. | DESCRIPTION                                | ITEM NO. |
|------|----------|--|----------|
| 1    | 14298    | PIN, FEEDER, SHORT - ASSY                  | 6        |
| 1    | 14296    | SPROCKET, CLUTCHED, 15T, BELLEVILLE SPRING | 5        |
| 1    | 10275    | SPACER, SPUR GEAR, 36T                     | 4        |
| 1    | 10640    | BRACKET, BEARING, FEEDER DRIVE - WMT       | 3        |
| 2    | 10627    | BEARING CLIP, Ø1/2" ID, .12 THK            | 2        |
| 1    | 10636    | PLATE, BEARING, FEEDER DRIVE               | 1        |

|   |  |         |               |   |   |
|---|--|---------|---------------|---|---|
| UNLESS OTHERWISE SPECIFIED DIMS ARE IN INCHES   |  | DATE    | NAME          | <br><small>(707) 284-7100<br/> (707) 284-7430 FAX<br/> WINDSOR, CA 95492-8594</small> | <small>THIS DOCUMENT IS THE PROPERTY OF<br/> niECO CORPORATION. REPRODUCTION<br/> OR RELEASE WITHOUT EXPRESS<br/> PERMISSION IS PROHIBITED.</small> |
| TOLERANCES:<br>FRACTIONAL ±1/32<br>ANGULAR: ±1°<br>TWO PLACE DECIMAL ±.02<br>THREE PLACE DECIMAL ±.01 |  | DRAWN   | 10-16-03      |   |   |
| MATERIAL  |  | CHECKED | -             | -   | SIZE<br><b>B</b>  |
| FINISH  |  | -       |               | DWG. NO.<br><b>14297</b>  | REV<br><b>B</b>   |
| TITLE: FEEDER DRIVE, BELLEVILLE SPRING CLUTCH - ASSY  |  |         |               |   |   |
| SCALE: 1:1  |  |         | WEIGHT: 0.738 |   | SHEET 1 OF 1  |

NOTE:  
1.

|             |         |
|-------------|---------|
| -           | -       |
| SIMILAR TO  | USED ON |
| APPLICATION |         |

8

7

6

5

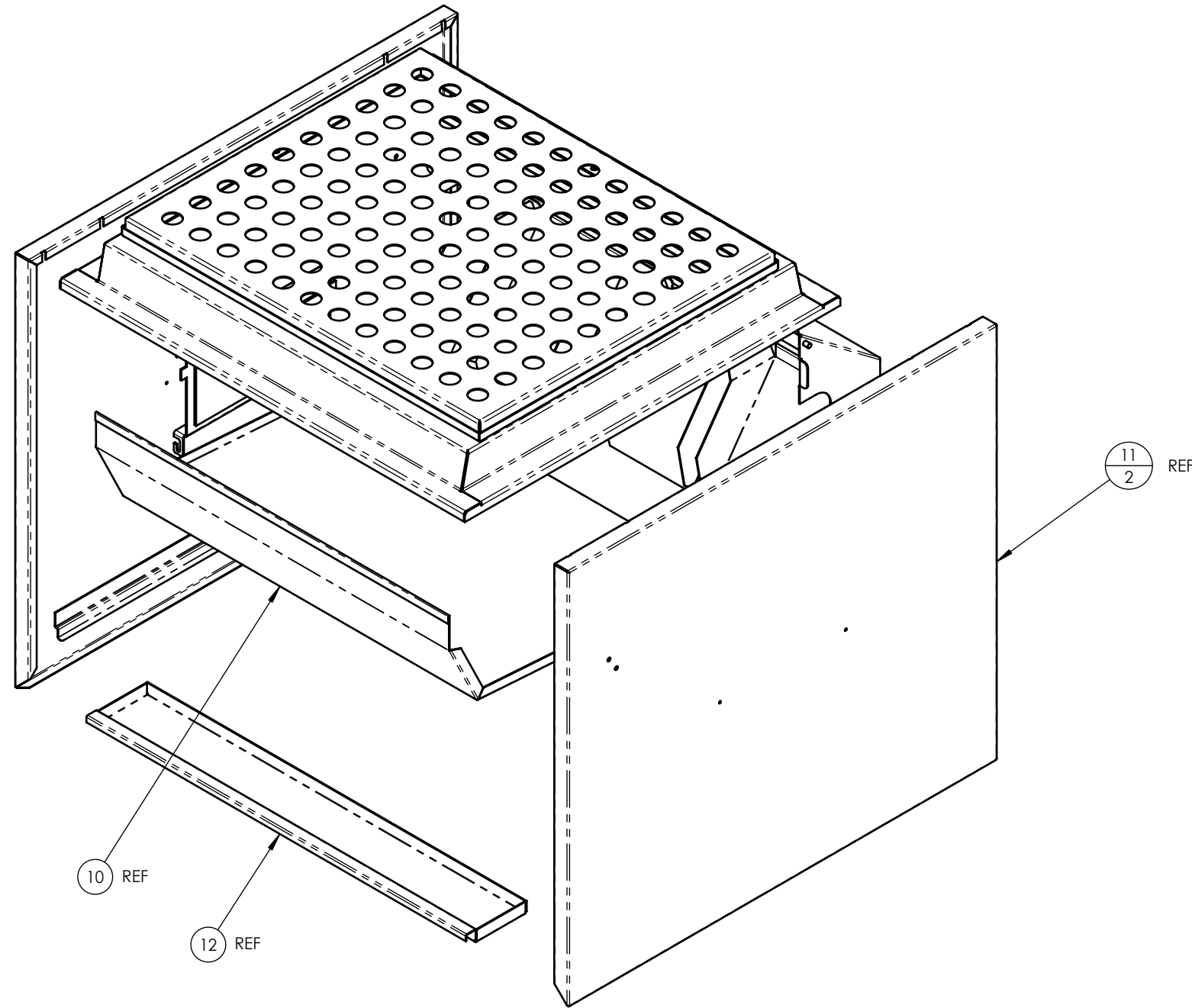
4

3


2

1

| REVISIONS |      |  |         |          |
|-----------|------|--|---------|----------|
| ZONE      | REV. | DESCRIPTION  | DATE    | APPROVED |
|           | A    | INITIAL RELEASE  | 7-7-03  | DC       |
|           | B    | ITEM 3, P/N IS 11863, WAS 13698                                  | 8-12-03 | DC       |
|           | C    | 1-REPLACED ITEM 3 WITH ITEM 14<br>2-REPLACED ITEM 9 WITH ITEM 13 | 9-29-06 | DC       |



| QTY. | PART NO. | DESCRIPTION                                    | ITEM NO. |
|------|----------|--|----------|
| 1    | 17491    | INSERT, PERFORATED, 20" X 24", 1" HOLES        | 14       |
| 1    | 17490    | HOOD, 20" X 24" CATALYST, N700/N800 - WLDMT    | 13       |
| 1    | 14168    | TRAY, GREASE DRIP - 25-5/8 X 4-1/8             | 12       |
| 2    | 14167    | PANEL, SIDE, 29 L X 25.5 H - WLDMT             | 11       |
| 1    | 14145    | GREASE PAN - FRONT, 24 X 19.12                 | 10       |
| 1    | 14142    | HOOD - 24.5 X 23 FRAME - WLDMT                 | 9        |
| 1    | 13984    | COVER, CONTROL BOX, 14.88 X 20.49" - WLDMT     | 8        |
| 1    | 13905    | DOOR, HINGED BURNER ACCESS - WLDMT             | 7        |
| 3    | 13832    | DIVIDER, SLIDE                                 | 6        |
| 1    | 13831    | SLIDE, RETURN FLOW, 3 LANE, 24.5" WIDE - WLDMT | 5        |
| 1    | 12861    | AWNING, DISCHARGE, PIVOTING, 24-1/2" - WLDMT   | 4        |
| 1    | 11863    | INSERT, PERFORATED, 18 X 24, 1" HOLES          | 3        |
| 1    | 9128     | TOOL, SHAFT CLEANING                           | 2        |
| 2    | 4448-03  | HINGE PIN                                      | 1        |

|   |  |         |         |  |  |
|---|--|---------|---------|--|--|
| UNLESS OTHERWISE SPECIFIED DIMS ARE IN INCHES   |  | DATE    | NAME    | <br><small>(707) 284-7100<br/>(707) 284-7430 FAX<br/>WINDSOR, CA<br/>95492-8594</small> | <small>THIS DOCUMENT IS THE PROPERTY OF<br/>NIECO CORPORATION. REPRODUCTION<br/>OR RELEASE WITHOUT EXPRESS<br/>PERMISSION IS PROHIBITED.</small> |
| TOLERANCES:<br>FRACTIONAL ±1/32<br>ANGULAR: ±1°<br>TWO PLACE DECIMAL ±.02<br>THREE PLACE DECIMAL ±.01 |  | DRAWN   | 6-30-03 |  |  |
| MATERIAL  |  | CHECKED | 7-7-03  | DC   |  |
| SEE PARTS LIST  |  | FINISH  |         | -----  |  |
| TITLE: SHIELDS, PANS, ETC. - N1575G   |  |         |         |  |  |
| SIMILAR TO  |  | USED ON |         | SCALE: 1:2   | WEIGHT:  |
| APPLICATION   |  |         |         | SHEET 1 OF 2   |  |

8 7 6 5 4 3 2 1

8 7 6 5 4 3 2 1

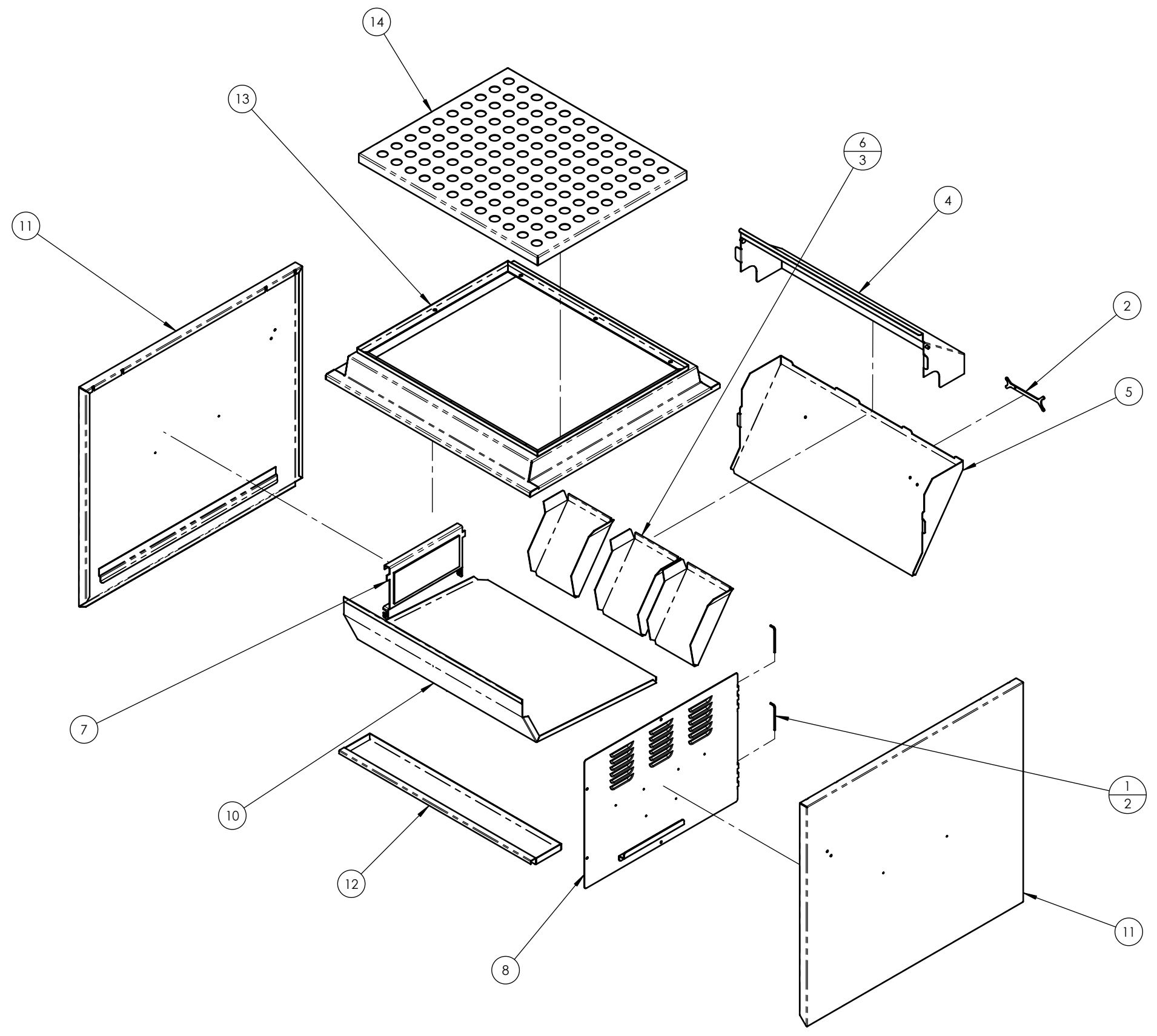
D  
C  
B  
A

D  
C  
B  
A

8 7 6 5 4 3 2 1

D  
C  
B  
A

D  
C  
B  
A



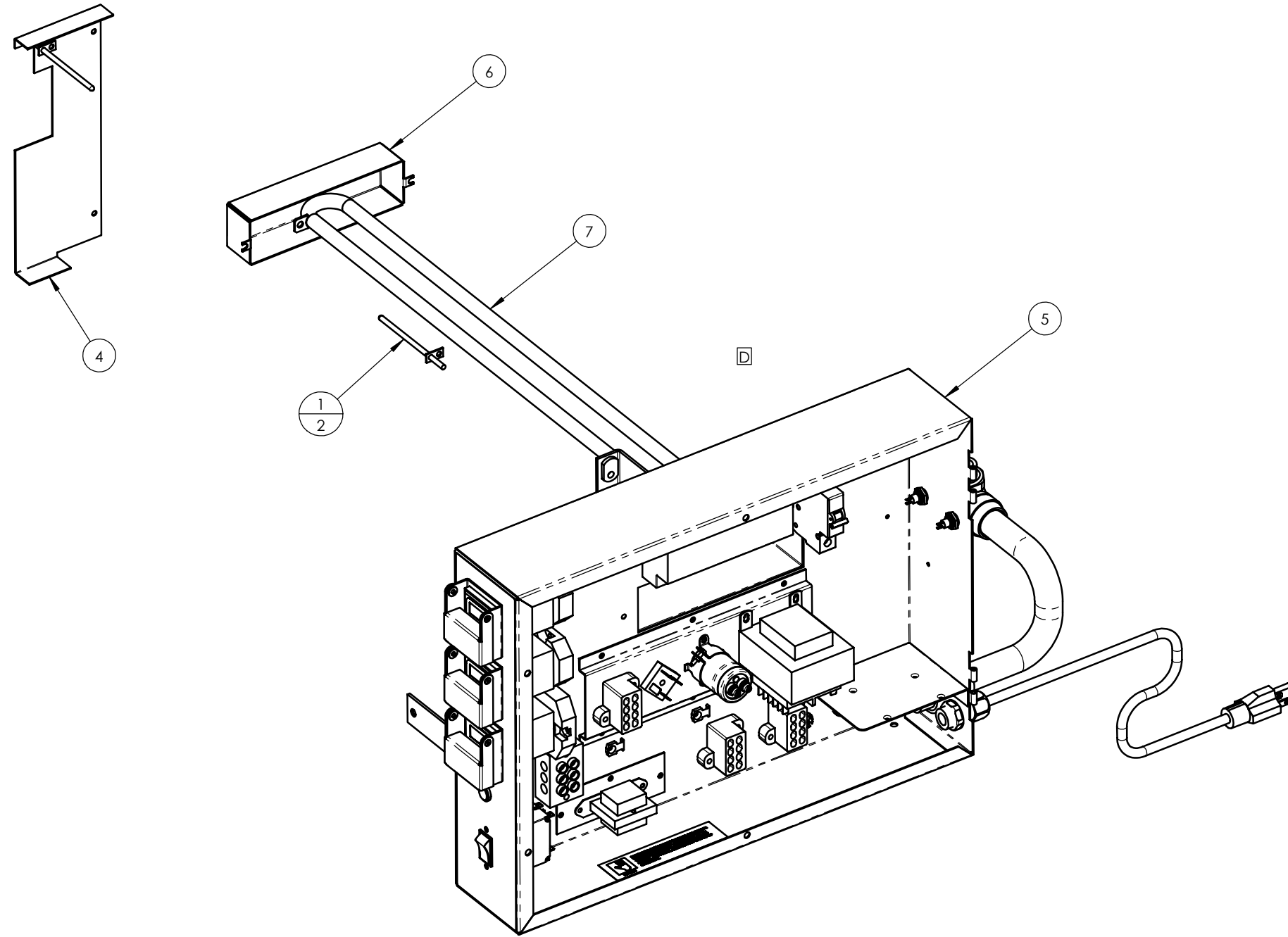
|                  |                          |   |  |
|------------------|--------------------------|---|--|
| <b>niECO</b>     |                          | (707) 284-7100<br>(707) 284-7430 FAX<br>WINDSOR, CA<br>95492-8594 | THIS DOCUMENT IS THE PROPERTY OF<br>niECO CORPORATION. REPRODUCTION<br>OR RELEASE WITHOUT EXPRESS<br>PERMISSION IS PROHIBITED. |
| SIZE<br><b>B</b> | DWG. NO.<br><b>14126</b> | REV<br><b>C</b>   |  |

TITLE: SHIELDS, PANS, ETC. - N1575G

SCALE: 1:2 WEIGHT: SHEET 2 OF 2


8 7 6 5 4 3 2 1

| REVISIONS |      |                                 |          |          |
|-----------|------|---------------------------------|----------|----------|
| ZONE      | REV. | DESCRIPTION                     | DATE     | APPROVED |
|           | A    | INITIAL RELEASE                 | 7-8-03   | DC       |
|           | B    | ADDED ITEMS 6 & 7.              | 8-6-03   | DC       |
|           | C    | UPDATED ITEM 5 TO LATEST REV    | 10/1/03  | PB       |
| 6C        | D    | DELETED ITEMS 2 & 3 PER ECR 70  | 4/21/04  | DI       |
|           | E    | ITEM 1 REPLACED. WAS P/N 12739. | 8-12-04  | DC       |
|           | F    | ADDED ITEM 8.                   | 12-22-04 | PB       |



NOTE:  
1 - ITEM 8 NOT SHOWN. IS ADDED WHEN WIRES ARE CONNECTED TO THE ELEMENT.

| QTY. | PART NO. | DESCRIPTION  | ITEM NO. |
|------|----------|--|----------|
| 2    | 5894     | TUBE, SILICONE, .420" ID X 2" LONG                     | 8        |
| 1    | 13654    | HEATER ELEMENT, 24", 120V HAIRPIN                      | 7        |
| 1    | 12182    | COVER, THERMOSTAT                                      | 6        |
| 1    | 14303    | CONTROL BOX, 2 BELT N SERIES, 115 VAC, FT - ASSY       | 5        |
| 1    | 14165    | COVER, THERMAL PROBE WIRE                              | 4        |
| 1    | 14013    | RAIL, MOUNTING, MODULAR TERMINAL BLOCK                 | 3        |
| 1    | 13738    | TERMINAL BLOCK, 10 PIN RECEPTICLE                      | 2        |
| 2    | 15576    | THERMOCOUPLE PROBE, W/SS OVER BRAID, TYPE J, 60" LEADS | 1        |

|   |  |               |         |  |  |
|---|--|---------------|---------|--|--|
| UNLESS OTHERWISE SPECIFIED DIMS ARE IN INCHES   |  | DATE          | NAME    | <br><small>(707) 284-7100<br/>(707) 284-7430 FAX<br/>WINDSOR, CA<br/>95492-8594</small> | <small>THIS DOCUMENT IS THE PROPERTY OF<br/>NIECO CORPORATION. REPRODUCTION<br/>OR RELEASE WITHOUT EXPRESS<br/>PERMISSION IS PROHIBITED.</small> |
| TOLERANCES:<br>FRACTIONAL ±1/32<br>ANGULAR: ±1°<br>TWO PLACE DECIMAL ±.02<br>THREE PLACE DECIMAL ±.01 |  | DRAWN         | 6-27-03 |  |  |
| MATERIAL<br>SEE PARTS LIST  |  | CHECKED       | 7-8-03  | DC   | SIZE<br><b>B</b>   |
| FINISH  |  | -----         |         | DWG. NO.<br><b>14125</b>   | REV<br><b>F</b>  |
| TITLE: <b>ELECTRICAL INSTALLATION - N1575G</b>  |  |               |         |  |  |
| SCALE: 1:2  |  | WEIGHT: 26.09 |         | SHEET 1 OF 1   |  |

|             |                |
|-------------|----------------|
| 13957       | 90084<br>90081 |
| SIMILAR TO  | USED ON        |
| APPLICATION |                |

8

7

6

5

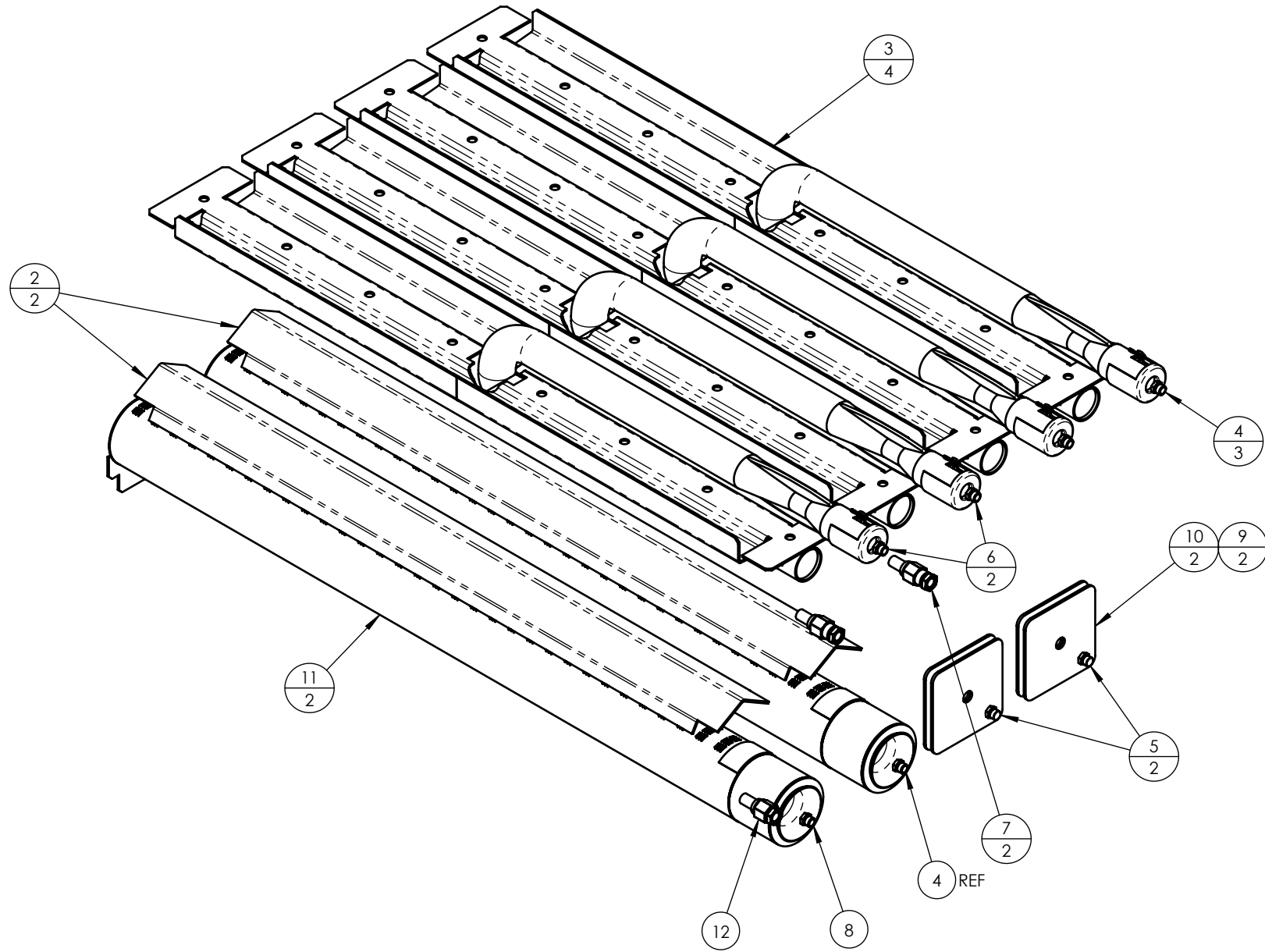
4

3

2

1

| REVISIONS |      |   |          |          |
|-----------|------|---|----------|----------|
| ZONE      | REV. | DESCRIPTION                                       | DATE     | APPROVED |
|           | A    | INITIAL RELEASE                                   | 7-7-03   | DC       |
|           | B    | 1 - ITEM 6 QUANTITY WAS 6X.<br>2 - ADDED ITEM 8.  | 8-6-03   | DC       |
|           | C    | ADDED ITEMS 9 & 10 PER ECR 62                     | 10-2-03  | PB       |
|           | D    | 1-ITEMS 7 REPLACED. WAS P/N 2018<br>2-PER ECR 89. | 11-17-03 | PB       |
|           | E    | ITEM 7 QTY WAS 2                                  | 12-11-03 | DC       |
|           | F    | REPLACE ITEM 1 WITH ITEM 11<br>PER ECR 110        | 1-9-04   | DC       |
| 3A        | G    | 1-ITEM 7 QUANTITY WAS 3<br>2-ADDED ITEM 12        | 4-12-05  | DC       |
|           | H    | ITEMS 3 REPLACED. WAS P/N 14130.                  | 5-30-06  | PB       |
|           | J    | ITEMS 11 REPLACED. WAS P/N 14240.                 | 6-18-07  | PB       |



| QTY. | PART NO. | DESCRIPTION   | ITEM NO. |
|------|----------|---|----------|
| [G2] | 1        | 2047 ORIFICE, PILOT, TOWN GAS (5232)                | 12       |
|      | 2        | 17886 BURNER, EXTENDED, Ø2" OD, 32 PORTS - WLDMT    | 11       |
|      | 2        | 14578 COVER PLATE W/WASHER, LOWER BURNER - WLDMT    | 10       |
|      | 2        | 14579 COVER PLATE W/WELDNUT, LOWER BURNER - WLDMT   | 9        |
|      | 1        | 2061 ORIFICE, BURNER, #36                           | 8        |
| [G1] | 2        | 2182 ORIFICE, PILOT (3225)                          | 7        |
|      | 2        | 2014 ORIFICE, BURNER, #50                           | 6        |
|      | 2        | 2070 ORIFICE, BURNER, BLANK                         | 5        |
|      | 3        | 2015 ORIFICE, BURNER, #48                           | 4        |
|      | 4        | 16134 BURNER W/REFLECTOR, GOOSENECK - 23.5" - WLDMT | 3        |
|      | 2        | 14017 SHIELD, BURNER, 24.5" FRAME                   | 2        |
|      | ±        | 13942 BURNER, CONVECTION, Ø2 OD X 25" - WLDMT       | ±        |

UNLESS OTHERWISE SPECIFIED DIMS ARE IN INCHES

TOLERANCES:  
 FRACTIONAL ±1/32  
 ANGULAR: ±1°  
 TWO PLACE DECIMAL ±.02  
 THREE PLACE DECIMAL ±.01

|  |         |   |  |
|--|---------|---|--|
| DATE                                     | NAME    | <b>nioco</b><br><small>(707) 284-7100<br/>       (707) 284-7430 FAX<br/>       WINDSOR, CA 95492-8594</small> | THIS DOCUMENT IS THE PROPERTY OF<br>NIICO CORPORATION. REPRODUCTION<br>OR RELEASE WITHOUT EXPRESS<br>PERMISSION IS PROHIBITED. |
| DRAWN                                    | 6-27-03 |   |  |
| CHECKED                                  | 7-7-03  | DC  |  |
| MATERIAL                                 | FINISH  | SIZE  | DWG. NO.   |
| SEE PARTS LIST                           | ----    | <b>B</b>  | <b>14124</b>   |
| TITLE: NATURAL GAS INSTALLATION - N1575G |         | REV   | <b>J</b>   |
| SCALE: 1:2                               |         | WEIGHT: 20.32   | SHEET 1 OF 1   |

|             |         |
|-------------|---------|
| SIMILAR TO  | USED ON |
| APPLICATION |         |

8

7

6

5

4

3

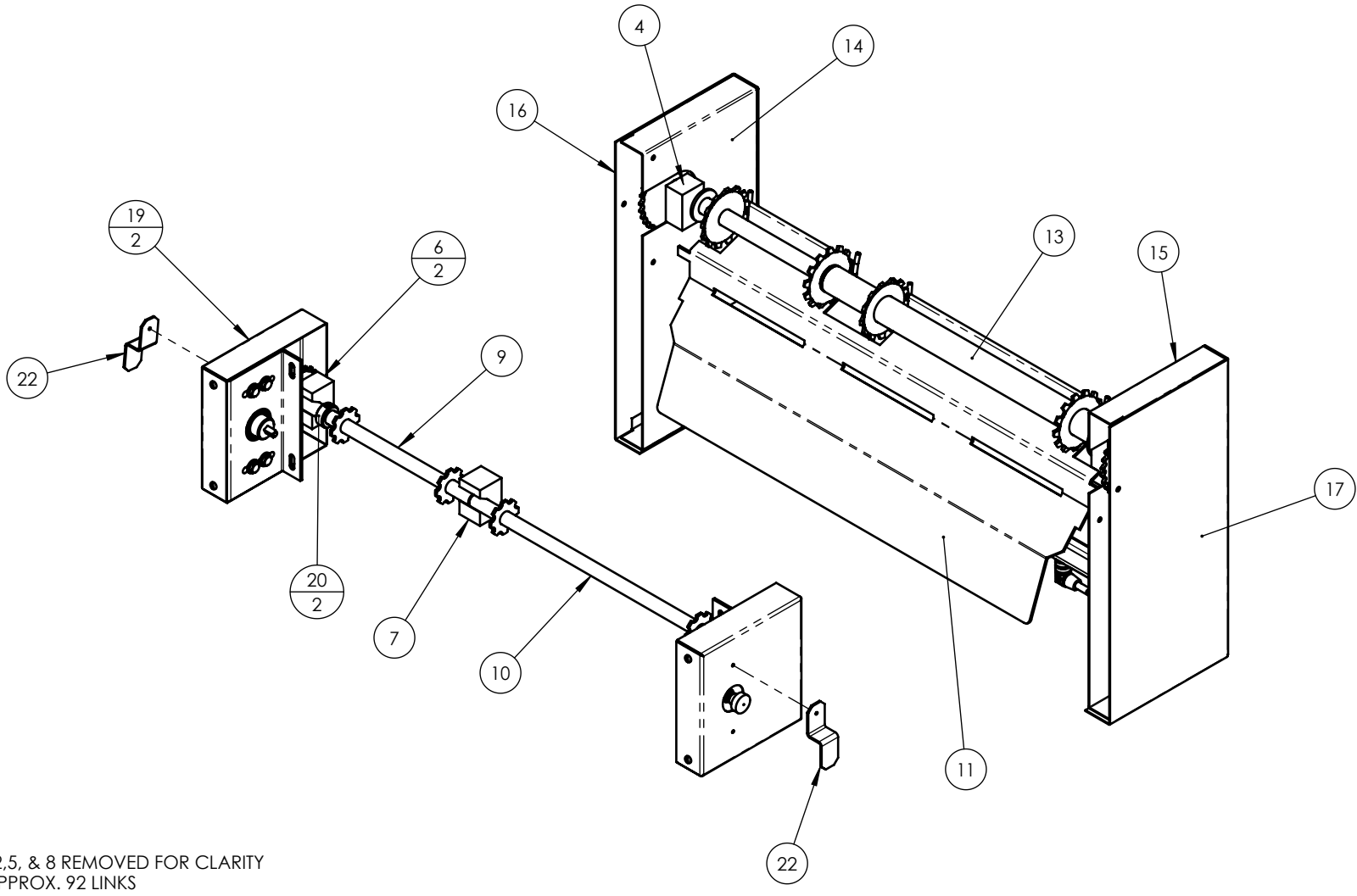
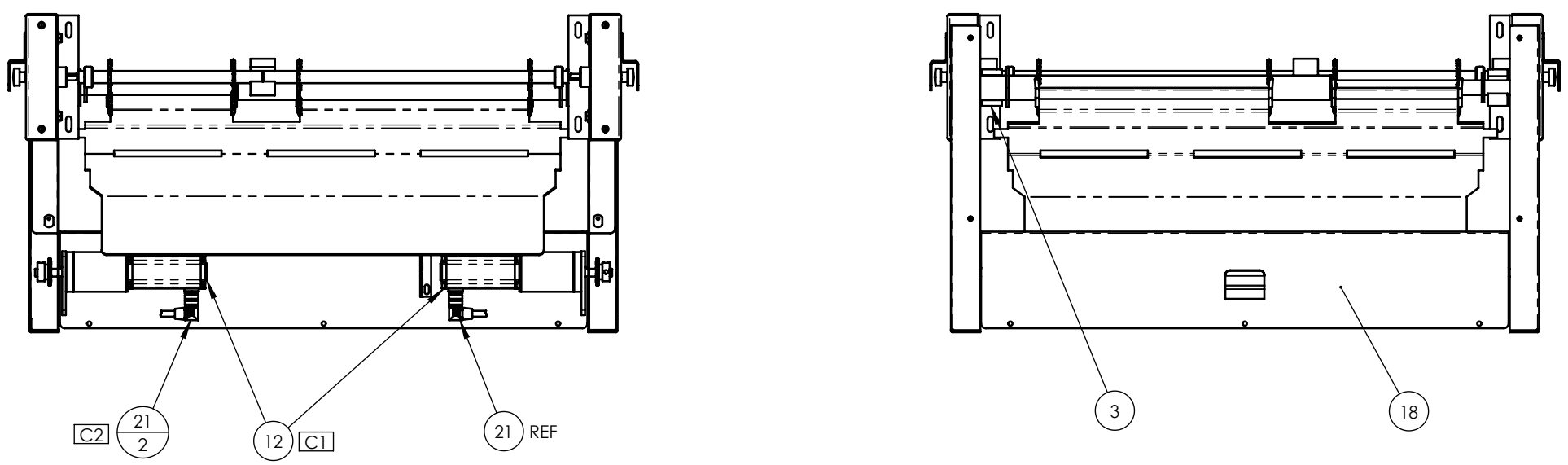
2

1



8 7 6 5 4 3 2 1

| REVISIONS |      |   |          |          |
|-----------|------|---|----------|----------|
| ZONE      | REV. | DESCRIPTION   | DATE     | APPROVED |
|           | A    | INITIAL RELEASE   | 6-24-03  | DC       |
|           | B    | 1-ITEM 7 REPLACED. WAS P/N 14312.<br>2-PER ECR 90                   | 11-14-03 | PB       |
| 7C<br>8C  | C    | 1- ITEM 12 WAS P/N 13821 IS 14813<br>2- ADDED ITEM 21<br>PER ECR 70 | 4-08-04  | PB       |
|           | D    | REPLACED ITEM 19, WAS P/N 14170                                     | 9-6-05   | DC       |
|           | E    | ADDED ITEM 22.  | 8-8-07   | CW       |



NOTE:  
 1 - ITEMS 1,2,5, & 8 REMOVED FOR CLARITY  
 2 - ITEM 2 APPROX. 92 LINKS  
 3 - ITEM 8 APPROX. 92 LINKS

| QTY. | PART NO. | DESCRIPTION  | ITEM NO. |
|------|----------|--|----------|
| 2    | 17494    | BRACKET, CLUTCH RESTRAINT, FEEDER DRIVE              | 22       |
| 2    | 14815    | CABLE W/RIGHT ANGLE FITTING, 24V MOTOR - 5 FT        | 21       |
| 2    | 6726     | SET COLLAR, Ø.56 BORE, ZINC PLATED                   | 20       |
| 2    | 14300    | DRIVE ASSY, FEEDER, CLUTCHED, INT., UNIVERSAL        | 19       |
| 1    | 13993    | COVER, MOTOR ENCLOSURE - WLDMT                       | 18       |
| 1    | 13983    | COVER, CHAIN GUARD - RIGHT                           | 17       |
| 1    | 13982    | COVER, CHAIN GUARD - LEFT                            | 16       |
| 1    | 13981    | CHAIN GUARD - RIGHT INNER - WLDMT                    | 15       |
| 1    | 13979    | CHAIN GUARD - LEFT INNER - WLDMT                     | 14       |
| 1    | 13930    | DRIVE SHAFT, 13.5 & 7.5" BELT - ASSY                 | 13       |
| 2    | 14813    | MOTOR W/10T SPROCKET, 24V, INNER DRIVE - ASSY        | 12       |
| 1    | 13597    | STRIPPER BLADE, 13 & 7-1/2" BELT - WLDMT             | 11       |
| 1    | 12873    | IDLER ROD, KEYED Ø5/8 X 18.09 LONG, 13" BELT - WLDMT | 10       |
| 1    | 12871    | IDLER ROD, KEYED, 5/8 X 11.88 LONG, 7.5 BELT - WLDMT | 9        |
| 1    | 10508    | ROD BELT, 7 GA., 5/8" PITCH, 7.5" WIDE               | 8        |
| 1    | 14249    | BEARING, ALUMINUM BRONZE, Ø5/8 SHAFT X 1-1/4 WIDE    | 7        |
| 2    | 6049     | BEARING, TEFLON, 1"W X 1-7/8"H, Ø5/8" SHAFT          | 6        |
| 2    | 6048     | MASTER LINK, #35 ROLLER CHAIN                        | 5        |
| 1    | 6047     | BEARING, TEFLON, 1"W X 1-7/8"H, Ø3/4" SHAFT          | 4        |
| 1    | 6046     | BEARING, TEFLON, 1"W X 1-7/8"H, Ø1-1/4" SHAFT        | 3        |
| 1    | 6035     | ROD BELT, 7 GA., 5/8" PITCH, 13" WIDE                | 2        |
| 1    | 6027     | CHAIN, ROLLER, #35                                   | 1        |

|   |  |         |            |  |   |
|---|--|---------|------------|--|---|
| UNLESS OTHERWISE SPECIFIED DIMS ARE IN INCHES   |  | DATE    | NAME       | <br><small>(707) 284-7100<br/>         (707) 284-7430 FAX<br/>         WINDSOR, CA<br/>         95492-8594</small> | <small>THIS DOCUMENT IS THE PROPERTY OF<br/>         NIECO CORPORATION. REPRODUCTION<br/>         OR RELEASE WITHOUT EXPRESS<br/>         PERMISSION IS PROHIBITED.</small> |
| TOLERANCES:<br>FRACTIONAL ±1/32<br>ANGULAR: ±1°<br>TWO PLACE DECIMAL ±.02<br>THREE PLACE DECIMAL ±.01 |  | DRAWN   | 6-23-03    |  |   |
| MATERIAL  |  | CHECKED | 6-24-03    | DC   |   |
| SEE PARTS LIST  |  | FINISH  |            |  |   |
| TITLE: CONVEYOR INSTALLATION - N1575G   |  |         | SCALE: 1:2 | WEIGHT: 47.45  | SHEET 1 OF 1  |

|             |         |
|-------------|---------|
|             |         |
| SIMILAR TO  | USED ON |
| APPLICATION |         |

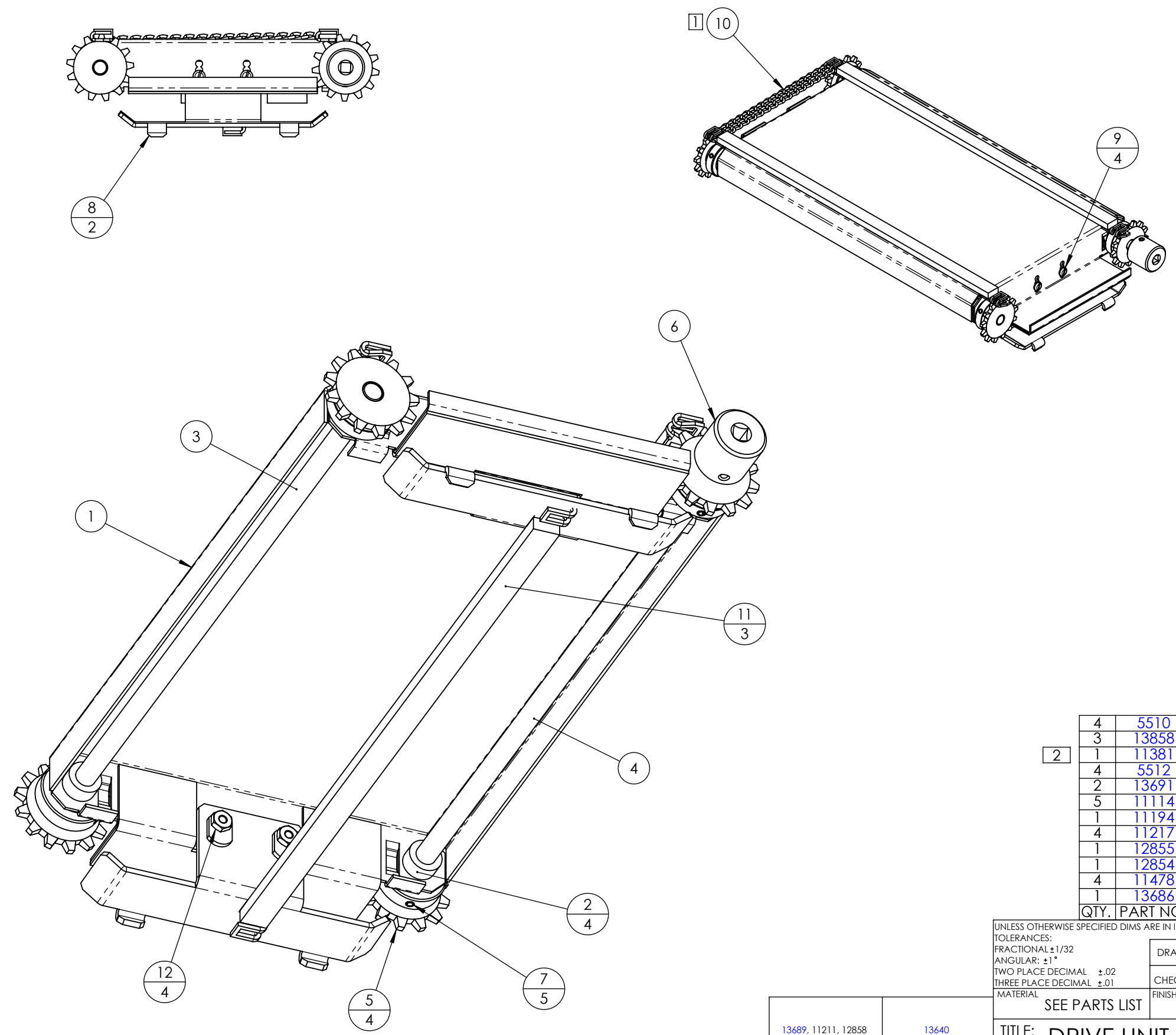
8 7 6 5 4 3 2 1

8 7 6 5 4 3 2 1

| REVISIONS |      |  |         |          |
|-----------|------|--|---------|----------|
| ZONE      | REV. | DESCRIPTION  | DATE    | APPROVED |
|           | A    | INITIAL RELEASE  | 1-8-03  | VS       |
|           | B    | RIVET, SPRING & TENSIONER DELETED<br>TENSIONER ASSY & SCREWS ADDED | 1-28-03 | VS       |
|           | C    | REVERSED CHAIN, REPLACED PUSH<br>BARS, ADDED JAM NUTS              | 3-26-03 | VS       |



D  
C  
B  
A

D  
C  
B  
A



NOTES:  
 [1] ITEM 10 TO BE ASSEMBLED IN 16 LINK SECTIONS BETWEEN INSTANCES OF ITEM 11. 5 PCS OMITTED FOR CLARITY  
 [2] 6 X 16 = 96 LINKS PER DRIVE UNIT  
 96 X .353/12 = 2.824 FEET CHAIN

| QTY. | PART NO. | DESCRIPTION                                   | ITEM NO. |
|------|----------|---|----------|
| 4    | 5510     | NUT, HEX, SS, 8-32                            | 12       |
| 3    | 13858    | PUSH BAR, FEEDER - 2 LANE - WLDMT             | 11       |
| 1    | 11381    | CHAIN, LADDER, .353 PITCH                     | 10       |
| 4    | 5512     | SCREW, PAN HEAD, 8-32 X 3/8"                  | 9        |
| 2    | 13691    | TENSIONER, FIXED, LADDER CHAIN, 16 LINK       | 8        |
| 5    | 11114    | ROLL PIN, Ø1/8 X 1", SS                       | 7        |
| 1    | 11194    | COUPLER, DRIVE, 1/4" SQ X Ø3/8" ID            | 6        |
| 4    | 11217    | SPROCKET, ROLLER CHAIN, 13T, Ø3/8 BORE        | 5        |
| 1    | 12855    | DRIVE SHAFT, FEEDER, Ø3/8 X 15.22"            | 4        |
| 1    | 12854    | SHAFT, IDLER, FEEDER, Ø3/8 X 14.44"           | 3        |
| 4    | 11478    | BUSHING, FLANGED, Ø3/8" SHAFT, W/FLAT         | 2        |
| 1    | 13686    | PLATFORM, 13" - FEEDER, 5.65" SPACING - WLDMT | 1        |

|   |  |            |               |   |   |
|---|--|------------|---------------|---|---|
| UNLESS OTHERWISE SPECIFIED DIMS ARE IN INCHES   |  | DATE       | NAME          | <br><small>(707) 284-7100<br/>         (707) 284-7430 FAX<br/>         WINDSOR, CA<br/>         95492-8594</small> | <small>THIS DOCUMENT IS THE PROPERTY OF<br/>         NIECO CORPORATION. REPRODUCTION<br/>         OR RELEASE WITHOUT EXPRESS<br/>         PERMISSION IS PROHIBITED.</small> |
| TOLERANCES:<br>FRACTIONAL ±1/32<br>ANGULAR: ±1°<br>TWO PLACE DECIMAL ±.02<br>THREE PLACE DECIMAL ±.01 |  | DRAWN      | 1-8-03        |   |   |
| MATERIAL  |  | CHECKED    | -             | -   | SIZE  |
| SEE PARTS LIST  |  | FINISH     | -             | -   | DWG. NO.  |
|   |  |            |               | <br><b>13690</b>   |   |
|   |  |            |               | REV   |   |
|   |  |            |               | <b>C</b>  |   |
| TITLE: DRIVE UNIT, FEEDER - 13" - ASSY  |  |            |               |   |   |
|   |  | SCALE: 1:4 | WEIGHT: 6.386 | SHEET 1 OF 1  |   |

|                     |         |
|---------------------|---------|
| 13689, 11211, 12858 | 13640   |
| SIMILAR TO          | USED ON |
| APPLICATION         |         |

8 7 6 5 4 3 2 1