

JetStar® POPCORN MACHINE

MODELS

JR4

Installation and
Operation
Instructions

2M-Z4430 Rev. H 01/31/19



JR4



SAFETY SYMBOL



These symbols are intended to alert the user to the presence of important operating and maintenance instructions in the manual accompanying the appliance.

RETAIN THIS MANUAL FOR FUTURE REFERENCE NOTICE

Using any part other than genuine Star factory supplied parts relieves the manufacturer of all liability.

Star reserves the right to change specifications and product design without notice. Such revisions do not entitle the buyer to corresponding changes, improvements, additions or replacements for previously purchased equipment.

Due to periodic changes in designs, methods, procedures, policies and regulations, the specifications contained in this sheet are subject to change without notice. While Star International Holdings Inc., Company exercises good faith efforts to provide information that is accurate, we are not responsible for errors or omissions in information provided or conclusions reached as a result of using the specifications. By using the information provided, the user assumes all risks in connection with such use.

MAINTENANCE AND REPAIRS

Contact your local authorized service agent for service or required maintenance.

Please record the model number, serial number, voltage and purchase date in the area below and have it ready when you call to ensure a faster service.

Model No. _____

Serial No. _____

Voltage _____

Purchase Date _____

Authorized Service Agent Listing

Reference the listing provided with the unit

or

for an updated listing go to:

Website: www.star-mfg.com
E-mail customerservice@star-mfg.com

Service Help Desk

Business Hours: 8:00 am to 4:30 p.m. Central Standard Time

Telephone: (800) 264-7827

Fax: (314) 781-2714

E-mail customerservice@star-mfg.com

Website: www.star-mfg.com

Mailing Address: Star Manufacturing International Inc.
265 Hobson Street
Smithville, TN 37166
U.S.A

SPECIFICATIONS:

J4R SERIES

Capacity:	115 one ounce servings per hour
Electrical:	120 volt, 60 hertz, single phase, 1130 watts, 9.4 amps 230 volt, 50/60 hertz, single phase, 1130 watts, 4.9 amps Cord Length - 6 ft. Plug NEMA Spec - NEMA 5-15P (120V Models) CEE7-7 (230V Models)
Dimensions:	15-7/8" W x 14-7/8" D x 23-3/4" H (40.3 cm W x 37.8 cm D x 60 cm H)



CAUTION

Before using your new equipment, read and understand all the instructions & labels associated with the unit prior to putting it into operation. Make sure all people associated with its use understand the units operation & safety before they use the unit.

All shipping containers should be checked for freight damage both visible and concealed. This unit has been tested and carefully packaged to insure delivery of your unit in perfect condition. If equipment is received in damaged condition, either apparent or concealed, a claim must be made with the delivering carrier.

Concealed damage or loss - if damage or loss is not apparent until after equipment is unpacked, a request for inspection of concealed damage must be made with carrier within 15 days. Be certain to retain all contents plus external and internal packaging materials for inspection. The carrier will make an inspection and will supply necessary claim forms.

IMPORTANT SAFEGUARDS

When using electrical appliances, basic safety precautions should always be followed, including the following:

1. Read and follow all instructions.
2. Do not touch hot surfaces. Use handles or knobs.
3. To protect against electric shock do not immerse cord, plugs, or any part of the machine in water or other liquid.
4. Close supervision is necessary when any appliance is used by or near children.
5. Unplug from outlet when not in use and before cleaning. Allow to cool before putting on or taking off parts, and before cleaning the appliance.
6. Do not operate any appliance with a damaged cord or plug or after the appliance malfunctions, or has been damaged in any manner. Contact the nearest Star authorized service center for repair or the delivering carrier for damages (visible or concealed).
7. The use of accessory attachments not recommended by the appliance manufacturer may cause injuries.
8. Do not use outdoors.
9. Do not let cord hang over edge of table or counter, or touch hot surfaces.
10. Do not place on or near a hot gas or electric burner, or in a heated oven.
11. **DO NOT** move an appliance containing hot oil or other hot liquids.
12. To disconnect, turn all controls to "off," (I) = on, (O) = off, then remove plug from wall outlet.
13. Do not use appliance for other than intended use.
14. "A popper that is plugged into an outlet should not be left unattended."
15. "This popper will not shut off automatically. To avoid overheating, add corn and oil before operating." - See *General Operating Instructions* for more information.
16. "Extreme caution must be used when unloading popcorn as the popcorn and the machine will be extremely hot."
17. **SAVE THESE INSTRUCTIONS.**

INSTALLATION

Each machine has been properly wired and inspected at the factory for operation on the voltage and type of current specified on the nameplate.



CAUTION:

DO NOT CONNECT TO ANY OTHER TYPE OF CURRENT OR THE MACHINE WILL BE SERIOUSLY DAMAGED.

120 VOLT MACHINES

Machines with a nameplate stamped 120V, are equipped for operation on 120 volt 60 hertz AC single phase service and must be connected to a 3 wire grounded, polarized receptacle.

230 VOLT MACHINES

Machines with a nameplate stamped 230V, are equipped for operation on 230 volt 50 hertz AC single phase service and must be connected to a 3 wire grounded receptacle. Customer must supply own light bulb rated 230V and 50W maximum.

GENERAL OPERATING INSTRUCTIONS

With all switches in the "OFF" (0) position, proceed in the following sequence to pop corn:

1. Turn "ON" (1) the light switch.
2. Turn "ON" (1) the kettle switch. Allow six or seven minutes to pre-heat the kettle. Thermostat adjustments should not be necessary as it has been preset at the factory for the correct popping temperature.
3. A corn and oil measuring cup is supplied with your machine. Pour an 1/8 cup measuring cup of oil (one ounce) in kettle, add 2 level 1/4 cup measuring cups (1/2 cup) of raw corn and 1/4 to 1/2 teaspoon of popcorn salt. Vary the amount of salt and oil to suit taste. If desired, salt may be added after the corn is popped.
or
Our Recommended corn is "Chiefs Choice" available with coconut oil in 4 oz portion packs from your local Star dealer.
4. When the corn stops popping, dump the kettle immediately by turning the handle clockwise approximately 90 degrees to release latch. Latch and load immediately if more popping is desired. Do not leave the kettle switch "on" (1) unless continuously popping corn. Results will vary with different oils and popcorn varieties.
5. Turn the kettle switch "off" (0) when the desired amount of popping is completed.



CAUTION:

DO NOT LEAVE THE KETTLE SWITCH "ON" (1) WHEN THE MACHINE IS NOT IN USE.

DO NOT IMMERSE KETTLE IN WATER OR ALLOW WATER TO COME IN CONTACT WITH THE HEATING ELEMENT.

POPPING CORN IN DRY KETTLE IS NOT RECOMMENDED.

MAINTENANCE

KEEPING THE POPPING UNIT CLEAN

After each popping period, wipe the inside and outside of the kettle while it is warm (not hot) with a clean cloth. This is important to keep salt and seasoning from forming a carbonized material which not only lowers popping efficiency but can cause excessive smoking or damage the kettle. Use a damp cloth and a warm mild soap solution to clean the clear plastic surfaces.

LIMITED EQUIPMENT WARRANTY

Star Manufacturing [as well as its subsidiaries, Toastmaster and Holman] warranties new products to be free from defects in material and/or workmanship for a period of one [1] year from the date of original installation, except as noted below. Defects that occur as a result of normal use, within the time period and limitations defined in this warranty, will at Star's discretion have the parts replaced or repaired by Star or a Star-authorized service agency.

THIS WARRANTY IS SUBJECT TO ALL LISTED CONDITIONS.

Repairs performed under this warranty are to be performed by a Star authorized service agency. Star will not be responsible for charges incurred or service performed by non-authorized repair agencies. In all cases, the nearest Star-authorized service agency must be used. Star will be responsible for normal labor charges incurred in the repair or replacement of a warranted product within 50 miles (80.5 km) of an authorized service agency. Time and expense charges for anything beyond that distance will be the responsibility of the owner. All labor will need to be performed during regular service hours. Any overtime premium will be charged to the owner. For all shipments outside the U.S.A. and Canada, please see the International Warranty for specific details. It is the responsibility of the owner to inspect and report any shipping damage claims, hidden or otherwise, promptly following delivery. No mileage or travel charges will be honored on any equipment that is deemed portable. In general, equipment with a cord and plug weighing less than 50 lb. (22.7 kg) is considered portable and should be taken or shipped to the closest authorized service agency, transportation prepaid.

PORTABLE EQUIPMENT EXAMPLES

- 514LL fryer
- 15MC and 18MCP hot food merchandisers
- QCS1, QCS2, and RCS2 toasters
- 16PD-A pretzel merchandisers
- Condiment dispensers except HPD- and SPD-series models
- All pop-up toasters
- All pastry display cabinets
- All heat lamps
- J4R popcorn machine
- 12NCPW and 15NCPW nacho merchandisers
- Nacho cheese warmers except 11WLA-series models
- Specialty food warmers except 13OR, 11RW, and 11WSA models
- All butter dispensers
- All nacho chip merchandisers
- All accessories

CONTACT

Should you require any assistance regarding the operation or maintenance of any Star equipment; write, phone, fax or email our service department. In all correspondence mention the model number and serial number of your unit, as well as the voltage or type of gas you are using.

Business hours are 8:00 a.m. to 4:30 p.m. Central Standard Time (CST)

Telephone: (800)-264-7827

Fax: (314)-781-2714

Email: Customerservice@star-mfg.com

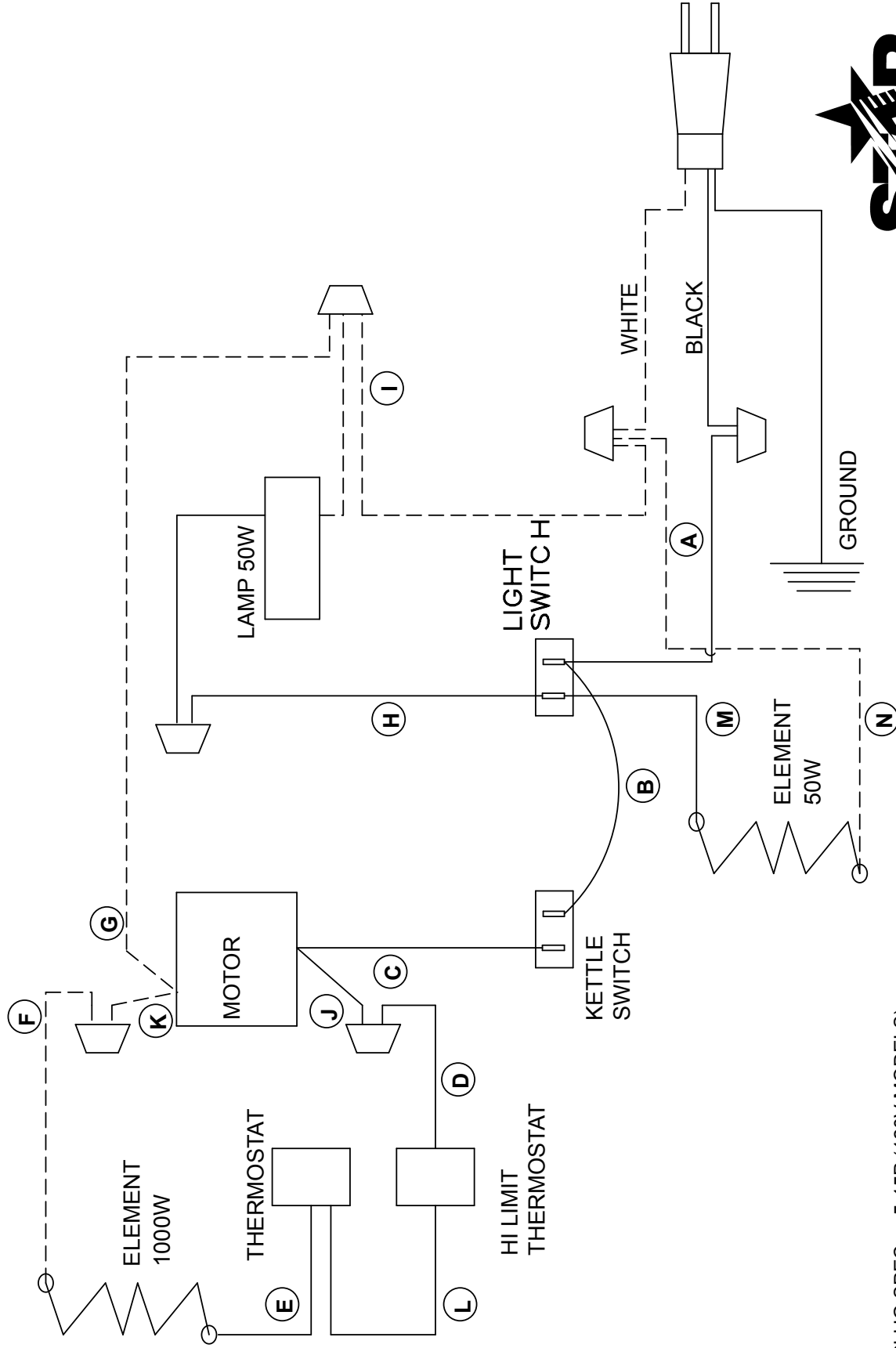
www.star-mfg.com

WARRANTY EXCLUSIONS

THE FOLLOWING WILL NOT BE COVERED UNDER WARRANTY.

- Any product which has not been used, cleaned, maintained, or installed in accordance with the directions published in the appropriate installation sheet and/or owner's manual as well as national and local codes, including incorrect gas, electrical, or water connection. Star is not liable for any unit which has been mishandled, abused, misapplied, subjected to chlorides, harsh chemicals, or caustic cleaners, damaged from exposure to hard water, modified by unauthorized personnel, damaged by flood, fire, or other acts of nature [or God], or which have an altered or missing serial number.
- Installation, labor, and job checkouts, calibration of heat controls, air and gas burner/bypass/pilot adjustments, gas or electrical system checks, voltage and phase conversions, cleaning of equipment, or seasoning of griddle surface.
- Replacement of fuses or resetting of circuit breakers, safety controls, or reset buttons.
- Replacement of broken or damaged glass components, quartz heating elements, and light bulbs.
- Labor charges for all removable parts in gas charbroilers and hotplates, including but not limited to burners, grates, and radiants.
- Any labor charges incurred by delays, waiting time, or operating restrictions that hinder a service technician's ability to perform service.
- Replacement of items subject to normal wear or items that can easily be replaced during a daily cleaning routine, such as but not limited to knobs, bulbs, fuses, quartz heating elements, baskets, racks, and grease drawers.
- Components that should be replaced when damaged or worn, but have been field-repaired instead [eg. field-welded fry pots]
- Any loss of business or profits.

PRODUCTS	PARTS	LABOR
Star-Ultra Max® fryers, griddles, charbroilers, and hotplates	2 years	2 years
Star-Max® fryers, griddles, charbroilers, and hotplates	2 years	2 years
Jetstar® popcorn poppers	2 years	2 years
Staltek™ roller grill coatings	5 years	
Cast iron grates, burners; and burner shields	180 days	
Star, Toastmaster, or Holman parts sold to repair equipment	90 days	
Service First	1 year	



PLUG SPEC: 5-15P (120V MODELS)
CEE7-7 (230V MODELS)

MODEL: J4R

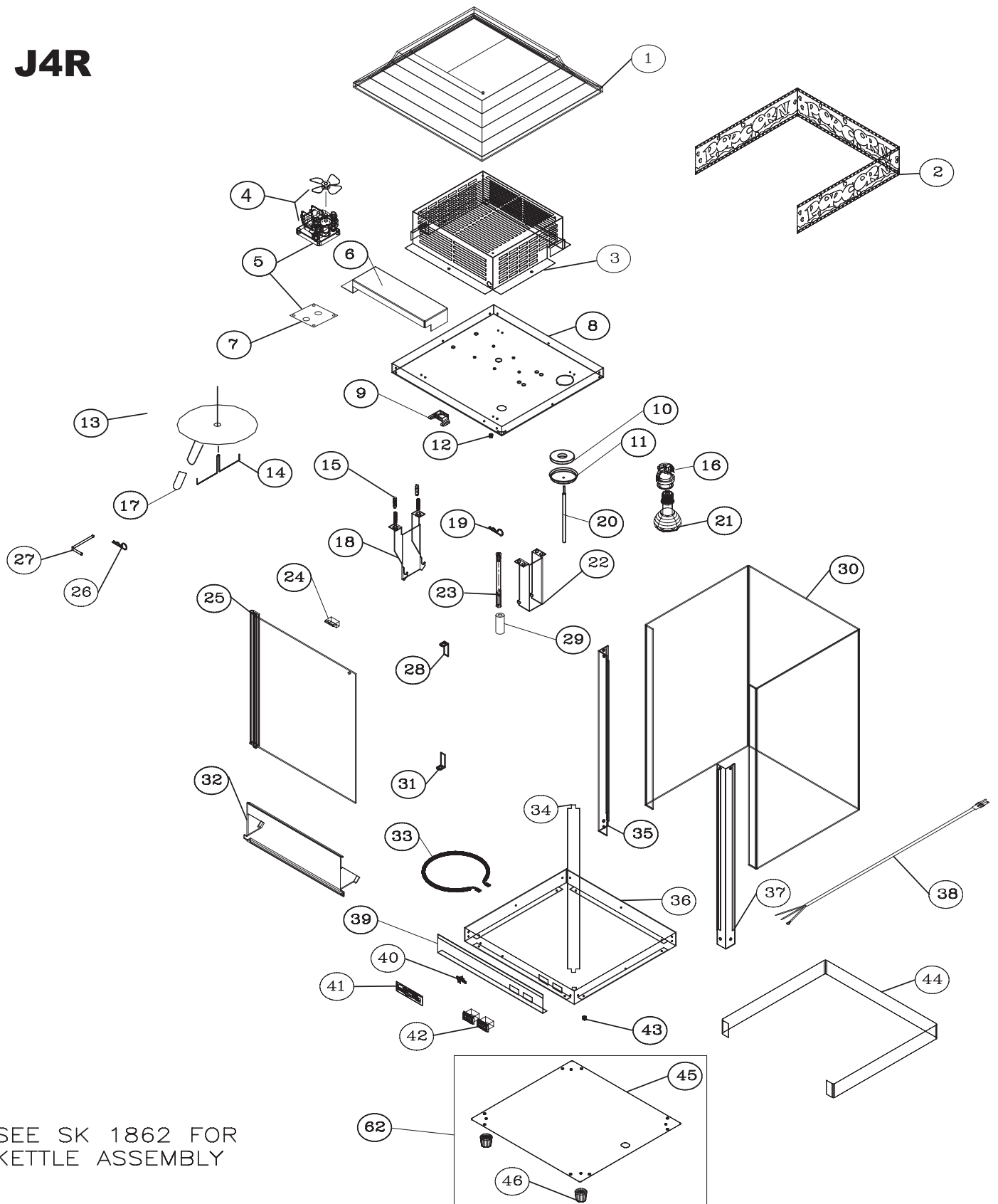
THIS DRAWING CONTAINS INFORMATION CONFIDENTIAL TO STAR MFG. INT'L. INC.
NO REPRODUCTION OR DISCLOSURE OF ITS CONTENTS IS PERMITTED.



STAR MANUFACTURING INTERNATIONAL INC.

SK1860 Rev B 10/08/2001

J4R



SEE SK 1862 FOR
KETTLE ASSEMBLY

STAR MANUFACTURING INTERNATIONAL

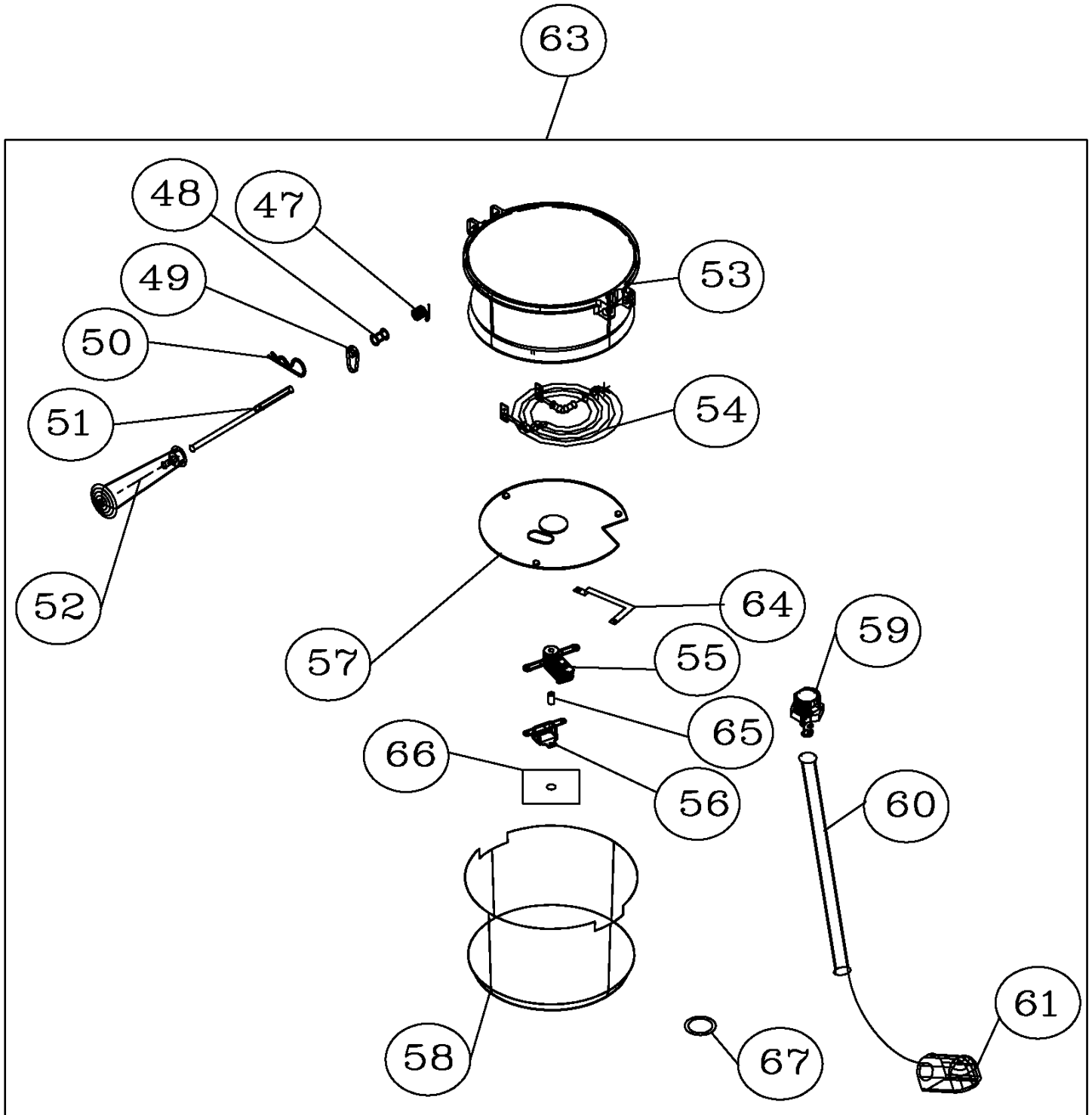
SK 1861

REV.

07-27-01

J4R

J4R



SEE SK 1861 FOR
J4R ASSEMBLY

STAR MANUFACTURING INTERNATIONAL

J4R

REV. A

SK 1862

11-14-01

DWG.

SDO

PARTS LIST

November 07, 2012, Rev. G

MODELS J4R 4 OZ. POPCORN POPPER

Key Number	Part Number	Number Per Unit	Description
1	2L-Z4372	1	Top
2	2M-Z4368	1	Sign Display
3	C3-Z4940	1	Top Enclosure
4	2U-Z12556	1	Motor-120V W/Fan
5	PS-4P1012	1	J4R 120V MTR KIT
	2U-Z12840	1	Motor-240V
6	C3-Z4964	1	Wire Housing
7	2I-Y6709	1	Motor Cushion
8	C3-4P1008	1	Topliner
9	2C-9788	1	Magnetic Catch
10	2R-Y7229	1	Magnet
11	C3-Y7230	1	Cup-Magnet
12, 43	2K-Z4317	2	Bushing SB-375
13	2D-4P1000	1	Kettle Cover Assembly
14	2B-Z4383	1	Blade Agitator
15	2P-Y6918	2	Spring Latch
16	2E-Y5921	1	Socket
17	2R-Y7571	1	Cover Tab
18	2D-4P1004	1	Kettle Latch Assembly
19	2A-Y6694	1	Hair Pin
20	2A-Z4466	1	Guide Cover
21	2S-Z4465	1	Lamp (130V Tuff Bond, 50 W) Lamp (230V) Not Available
22	2D-Z4380	1	Hinge Bracket
23	2A-Z4382	1	Shaft-Agitator
24	C3-Y7475	1	Pull Door
25	C3-4P1005	1	Door and Hinge Assembly
26	2A-Y6694	1	Hair Pin
27	2A-Y4595	1	Pin Hinge Plated
28	C3-Y7446	1	Bracket Hinge Right
29	2A-Z4384	1	Collar-Agitator
30	C3-Z4371	1	Body
31	C3-Y7377	1	Bracket Hinge Left
32	C3-4P1006	1	Lower Door
33	2N-Y4306	1	Element 50W 120V
	2N-Z3781	1	Element 50W 240V
34	C3-Z4379	1	Wire Cover
35	C3-Z4429	1	Corner Post Left
36	C3-4P1007	1	Bottom
37	C3-Z4428	1	Corner Post Right
38	A5-250027	1	Lead-In Cord
	C3-39221	1	Lead-In Cord 230V

**IMPORTANT: WHEN ORDERING, SPECIFY VOLTAGE OR TYPE GAS DESIRED
INCLUDE MODEL AND SERIAL NUMBER**

PAGE 1
OF 2

Some items are included for illustrative purposes only and in certain instances may not be available.



Star Manufacturing International, Inc.

PARTS LIST

November 07, 2012, Rev. G

MODELS J4R 4 OZ. POPCORN POPPER

Key Number	Part Number	Number Per Unit	Description
39	C3-Z4852	1	Front Panel
40	2M-Z2718	1	Star Emblem
41	C3-Z4431	1	Nameplate
	C3-Z4992	1	Nameplate 230V
42	2E-Z0091	2	Switch
44	C3-Z4459	1	Bottom Wrap
45	C3-Z4375	1	Bottom Panel
46	2I-Z0057	4	Foot Rubber
47	2P-Z4619	1	Spring Handle
48	2A-Y6142	1	Sleeve Handle
49	C3-Y5378	1	Cam
50	2B-Y6139	1	Clip-Handle
51	2A-Z4525	1	Rod-Handle
52	2R-Y7381	1	Handle-Kettle
53	2F-Z4386	1	Kettle, Aluminum
54	2N-Z4418	1	Element 1000W 120V
	2N-Z4991	1	Element 1000W 230V
55	2T-Z4524	1	Thermostat BI-MET 510
56	2T-Y9419	1	Thermostat, High Limit
57	2D-Z4446	1	Element Plate
58	2D-Z4387	1	Kettle Shell
59	2E-Z1520	1	3/8 Connector Conduit
60	2E-8355	1	Conduit Kettle
61	2E-1177	1	Connector 3/8 TB #266
62	PS-4P1009	1	Bottom Panel Assy
63	C3-4P1002	1	Kettle Assy Complete 120V
	C3-4P1010	1	Kettle Assy Complete 230V
64	E1-7363	1	Clamp
65	C3-Z5078	1	Spacer
66	C3-Z5079	1	Insulation Pad
67	2E-Y4967	1	Washer
NI	2L-Y4639	1	1/4 Cup Measuring Cup
NI	2L-Y4916	1	RED Popcorn Scoop
NI	2E-Z4440	1	Wire Kit
NI	2M-Z4861	1	Decal - Switches

**IMPORTANT: WHEN ORDERING, SPECIFY VOLTAGE OR TYPE GAS DESIRED
INCLUDE MODEL AND SERIAL NUMBER**

PAGE 2
OF 2

Some items are included for illustrative purposes only and in certain instances may not be available.



Star Manufacturing International, Inc.

STAR MANUFACTURING INTERNATIONAL INC.

Star - Holman - Lang - Wells - Toastmaster

265 HOBSON ST. SMITHVILLE, TN 37166

(800) 264-7827

www.star-mfg.com