

STAR[®] **DISPLAY** **MERCHANDISERS**

MODEL
12NCPW
15NCPW

Installation and Operation Instructions

2M-Y8266 Rev. C 3/4/2013



SAFETY SYMBOL



These symbols are intended to alert the user to the presence of important operating and maintenance instructions in the manual accompanying the appliance.

RETAIN THIS MANUAL FOR FUTURE REFERENCE NOTICE

Using any part other than genuine Star factory supplied parts relieves the manufacturer of all liability.

Star reserves the right to change specifications and product design without notice. Such revisions do not entitle the buyer to corresponding changes, improvements, additions or replacements for previously purchased equipment.

Due to periodic changes in designs, methods, procedures, policies and regulations, the specifications contained in this sheet are subject to change without notice. While Star International Holdings Inc., Company exercises good faith efforts to provide information that is accurate, we are not responsible for errors or omissions in information provided or conclusions reached as a result of using the specifications. By using the information provided, the user assumes all risks in connection with such use.

MAINTENANCE AND REPAIRS

Contact your local authorized service agent for service or required maintenance. Please record the model number, serial number, voltage and purchase date in the area below and have it ready when you call to ensure a faster service.

Model No. _____

Serial No. _____

Voltage _____

Purchase Date _____

Authorized Service Agent Listing

Reference the listing provided with the unit

or

for an updated listing go to:

Website: www.star-mfg.com
E-mail Service@star-mfg.com

Service Help Desk

Business Hours: 8:00 am to 4:30 p.m. Central Standard Time

Telephone: (314) 678-6303

Fax: (314) 781-2714

E-mail Parts@star-mfg.com
Service@star-mfg.com
Warranty@star-mfg.com

Website: www.star-mfg.com

Mailing Address: Star International Holdings Inc., Company
10 Sunnen Drive
St. Louis, MO 63143
U.S.A

SPECIFICATIONS

Model	Electrical						Dimensions			Weight			
	Voltage	Hz	Ph	Watts	Amps	Plug	Width	Depth	Height				
12MC	120V	60Hz	1Ph	475	3.96	5-15P	12 1/2" (31.8cm)	13 5/8" (34.7cm)	18 7/8" (47.9cm)	23.5lbs (10.66kg)			
	230V	50/60Hz			2.07	CEE7-7		14 3/4" (37.5cm)					
12MCPT	120V	60Hz			3.96	5-15P				15" (38.1cm)	16 1/8" (40.9cm)	24 7/8" (63.2cm)	25lbs (11.34kg)
	230V	50/60Hz			2.07	CEE7-7							
15MC	120V	60Hz		625	5.21	5-15P	15" (38.1cm)	16 1/8" (40.9cm)	24 7/8" (63.2cm)				35.5lbs (16.1kg)
	230V	50/60Hz			2.72	CEE7-7							
15MCMR	120V	60Hz			5.21	5-15P				17 1/4" (43.8cm)	37lbs (16.78kg)		
15MCPT	120V	60Hz			5.21	5-15P							
	230V	50/60Hz			2.72	CEE7-7							
15MCN	120V	60Hz			5.21	5-15P						16 1/8" (40.9cm)	35.5lbs (16.1kg)
18MCP	120V	60Hz		250	2.08	5-15P	18 1/2" (47cm)	19 5/8" (49.8cm)	42lbs (19.05kg)				
	230V	50/60Hz			1.04	CEE7-7							
18MCPT	120V	60Hz	2.08		5-15P	20 3/4" (52.7cm)				44lbs (19.96kg)			
	230V	50/60Hz	1.04		CEE7-7								



GENERAL INSTALLATION DATA

This equipment is designed and sold for commercial use only by personnel trained and experienced in its operation and is not sold for consumer use in and around the home nor for use directly by the general public in food service locations. For equipment to be used by the general public, please contact the factory.

VOLTAGE

The warmer is equipped for use on the voltage specified on the nameplate.



DO NOT CONNECT TO ANY OTHER TYPE OF CURRENT OR THE MACHINE WILL BE SERIOUSLY DAMAGED.

GENERAL OPERATING INSTRUCTIONS

This warmer will help build impulse sales when placed on either a front or back counter. When used as a Nacho Warmer and coupled with Star's Nacho Cheese Warmer, you have all the equipment necessary to get into the very profitable Nacho business! Care should be used when loading chips into this merchandiser/warmer to prevent breakage. A stainless steel chute is provided to help control breakage. Serving is accomplished by opening the lexan door and scooping chips or popcorn into an appropriate serving container.

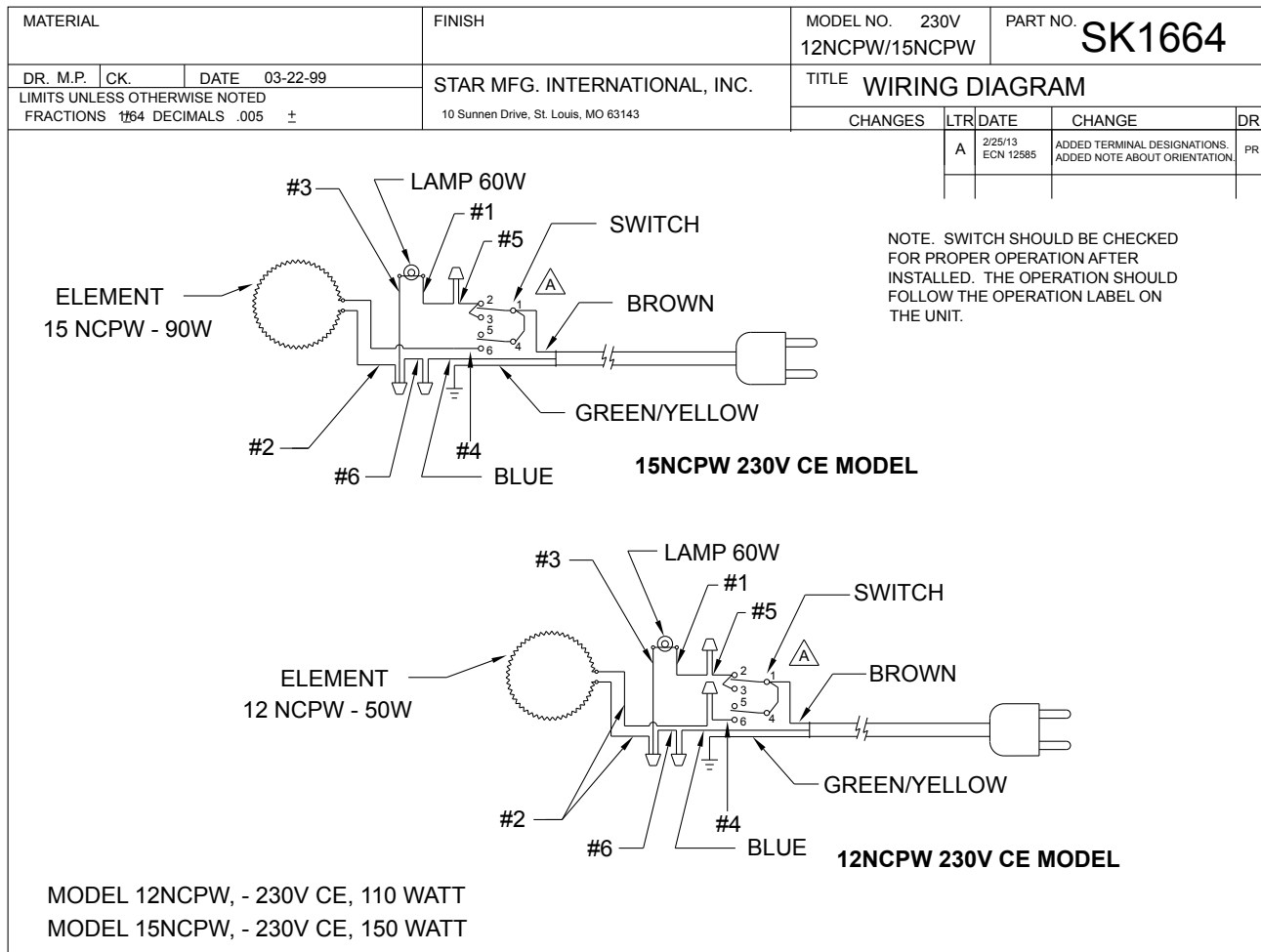
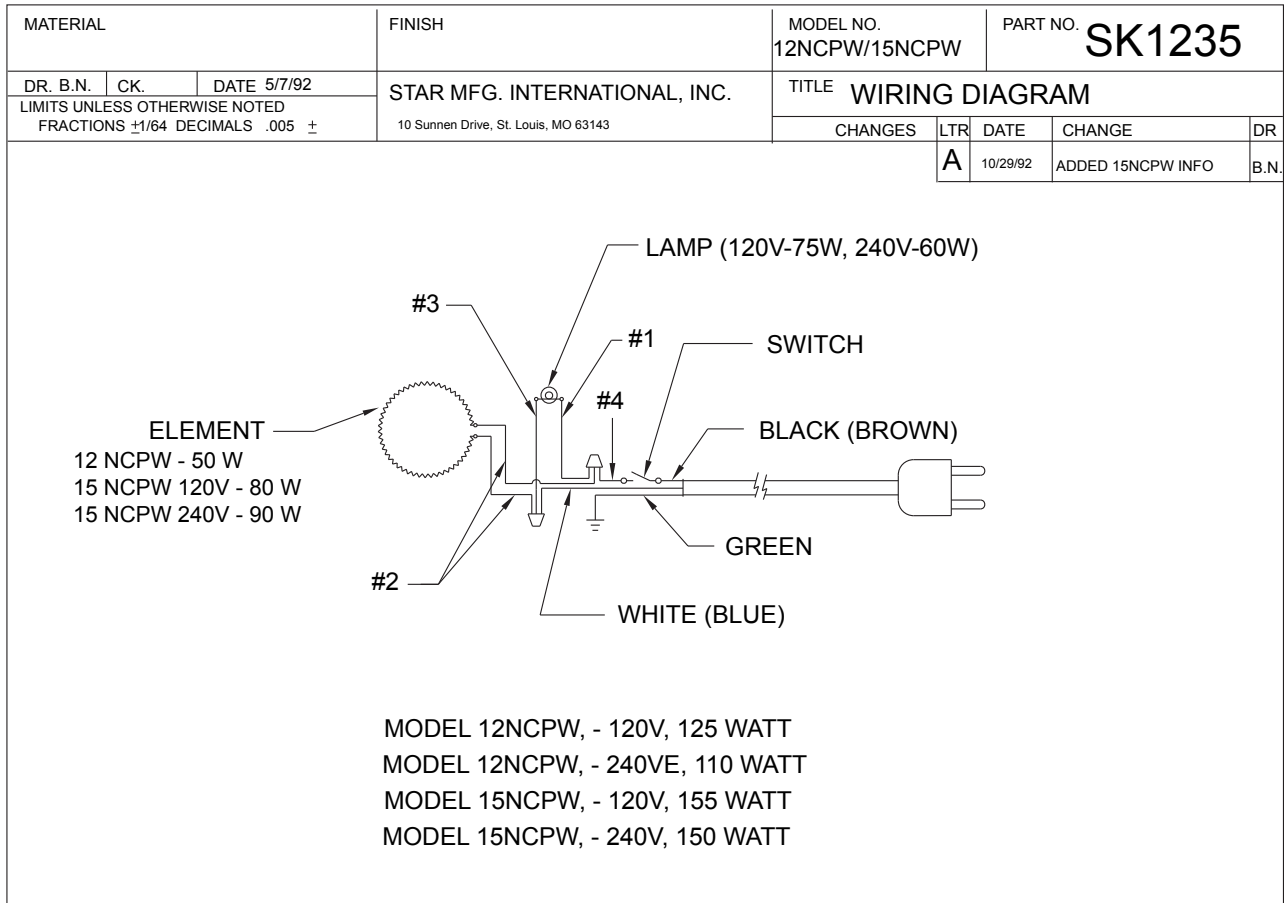
A warmer element is located under the stainless steel bottom of the unit that gently warms the food product. Turn "ON" the side mounted switch to activate this element and the lamp.

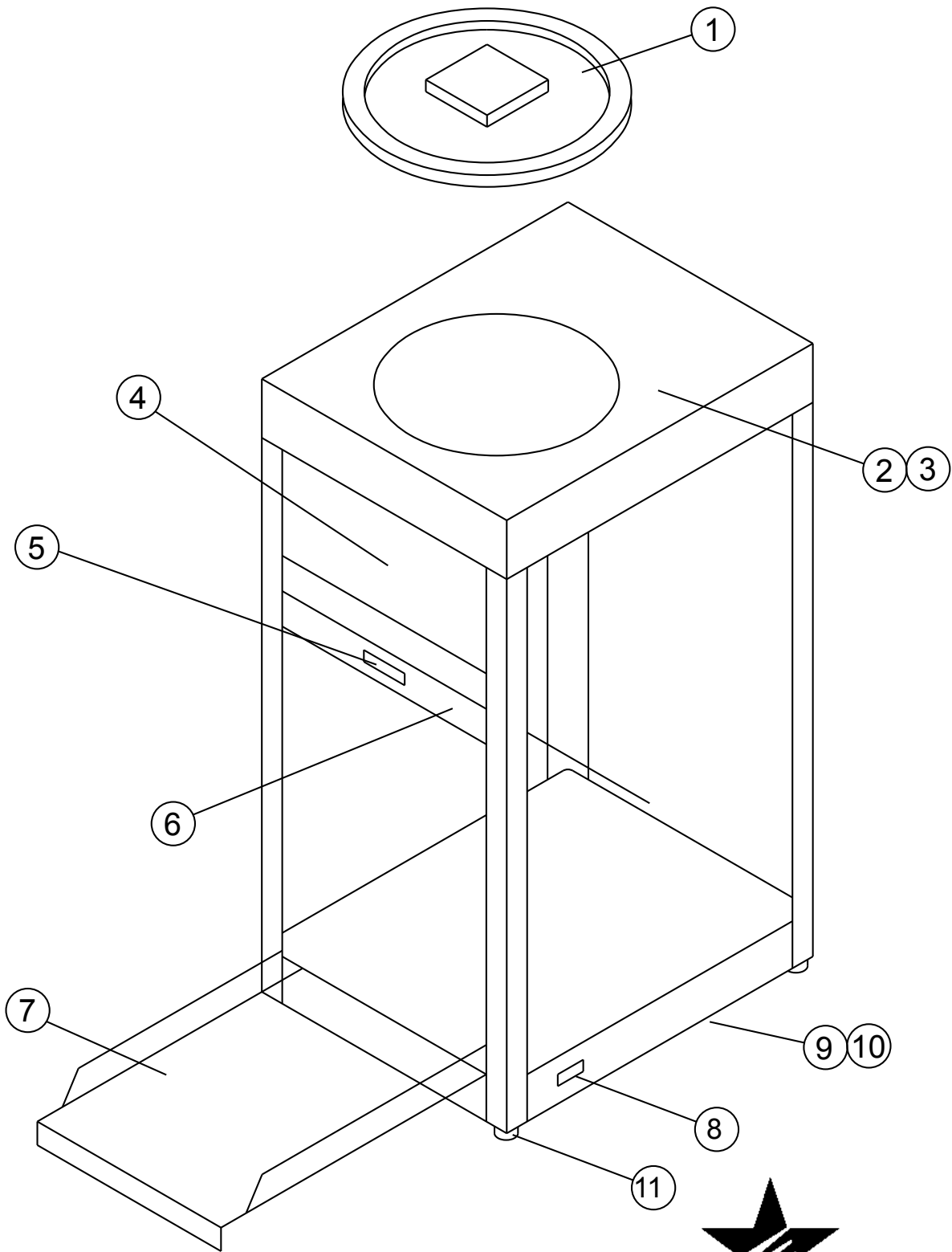
CLEANING

For retaining the high luster on the stainless steel, use a non-abrasive standard stainless steel cleaner. Use a damp cloth and warm mild soap solution to clean the glass, aluminum and plastic surfaces.

MAINTENANCE AND REPAIRS

Contact the factory, a service representative or a local service company for service or required maintenance.





MODEL 12/15 NCPW

STAR MANUFACTURING INTERNATIONAL, INC.

SK1388

9/7/95

PARTS LIST

March 6, 2013, Rev C

Model: 12NCPW & 15NCPW Display Merchandisers				
Fig No	PartNo	Qty	Description	Application
1	2L-Y8251	1	LID	
2	2S-Y4584	1	LAMP-75W 120V (NOT SHOWN) REFLECTOR FLOOD	120V
	2S-Y8229		LAMP-60W 240V (NOT SHOWN) REFLECTOR FLOOD	240V
3	2E-Y5636	1	SOCKET-W/31" LEADS (NOT SHOWN)	
4	2M-Y8249	1	SIGN - NACHO CHIPS	12NCPW
	2M-Y8260		SIGN - POPCORN	
	2M-Y8258		SIGN - NACHO CHIPS	15NCPW
	2M-Y8259		SIGN - POPCORN	
5	2R-Z2334	1	MAGNET CATCH	
6	C5-Y8176	1	SHELF, SMALL	12NCPW
	C4-Y8177		SHELF	15NCPW
7	C5-Y8154	1	LOWER DOOR ASSEMBLY	12NCPW
	C5-Y8160	1	LOWER DOOR ASSEMBLY	15NCPW
8	2E-Y6144	1	SWITCH SPST 20A/120V	120V
	2E-Z16935		SWTCH, RCKR, DPDT, ON-OFF-ON	230V
9	C5-12004	1	PWR CORD ASSY	120V
	C4-12014			240V
	C5-12020			230CE
10	2N-Y4306	1	ELEMENT-50W 120V (NOT SHOWN)	12NCPW
	2N-Y8077	1	ELEMENT-50W 240V (NOT SHOWN)	12NCPW
	2N-Y4380	1	ELEMENT-80W 120V (NOT SHOWN)	15NCPW, 120V
	2N-Y4381	1	ELEMENT-90W 240V (NOT SHOWN)	15NCPW, 230/240V
11	2I-Z15546	4	BUMPER, RUBBER	
	C5-Y8184	1	LAMP SHIELD	
	C5-Y8153	1	LAMP BRACKET	
	C5-Y7725	1	ADHESIVE STRIP	
	C5-Y7724	1	STRIKE	
	2K-7889	1	BUSHING - CORD - 90° (NOT SHOWN)	
	2I-Y4274	1	GASKET (NOT SHOWN)	
	C5-Y8182	1	TOP-PAINTED	12NCPW
	C4-Y8183	1	TOP-PAINTED	15NCPW
(REPLACEMENT GLASS MUST BE PURCHASED LOCALLY)				
	2Q-Y8156	1	GLASS-BACK (5" x 10")	12NCPW
	2Q-Y8164	2	GLASS-SIDE (13" x 17")	12NCPW
	2Q-Y8163	1	GLASS-FRONT (10" x 17")	12NCPW
	2Q-Y8157	1	GLASS-BACK (8" x 13")	15NCPW
	2Q-Y8165	3	GLASS-SIDES (13" x 20") AND FRONT	15NCPW



Star Manufacturing International, Inc.

THOROUGHLY INSPECT YOUR UNIT ON ARRIVAL

This unit has been tested for proper operation before leaving our plant to insure delivery of your unit in perfect condition. However, there are instances in which the unit may be damaged in transit. In the event you discover any type of damage to your product upon receipt, you must immediately contact the transportation company who delivered the item to you and initiate your claim with same. If this procedure is not followed, it may affect the warranty status of the unit.

LIMITED EQUIPMENT WARRANTY

All workmanship and material in Star products have a one (1) year limited warranty on parts & labor in the United States and Canada. Such warranty is limited to the original purchaser only and shall be effective from the date the equipment is placed in service. Star's obligation under this warranty is limited to the repair of defects without charge, by the factory authorized service agency or one of its sub-agencies. Models that are considered portable (*see below*) should be taken to the closest Star service agency, transportation prepaid.

- > Star will not assume any responsibility for loss of revenue.
- > On all shipments outside the United States and Canada, see International Warranty.
- * The warranty period for the Ultra-Max, Hot Plates, Griddles, Charbroilers is (3) years parts & labor.
- * The warranty period for the Star-Max, Charbroilers, Griddles, Hot Plates, Fryers & Finishing Oven is (2) years parts & labor.
- * The warranty period for the JetStar six (6) ounce & Super JetStar eight (8) ounce series popcorn machines is two (2) years.
- * The warranty period for the Chrome-Max Griddles is five (5) years on the griddle surface. See detailed warranty provided with unit.
- * The warranty period for Dura-Tec coatings is one year under normal use and reasonable care. This warranty does not apply if damage occurs to Dura-Tec coatings from improper cleaning, maintenance, use of metallic utensils, or abrasive cleaners, abrasive pads, product identifiers and point-of-sale attachments, or any other non-food object that comes in continuous contact with the roller coating. This warranty does not apply to the "non-stick" properties of such materials.
- > This warranty does not apply to "Special Products" but to regular catalog items only. Star's warranty on "Special Products" is six (6) months on parts and ninety (90) days on labor.
- > This warranty does not apply to any item that is disassembled or tampered with for any purpose other than repair by a Star Authorized Service Center or the Service Center's sub-agency.
- > This warranty does not apply if damage occurs from improper installation, misuse, wrong voltage, wrong gas or operated contrary to the Installation and Operating instructions.
- > This warranty is not valid on Conveyor Ovens *unless* a "start-up/check-out" has been performed by a Factory Authorized Technician.

PARTS WARRANTY

Parts that are sold to repair out of warranty equipment are warranted for ninety (90) days. The part only is warranted, the labor to replace the part is **NOT** warranted.

SERVICES NOT COVERED BY WARRANTY

1. Travel time and mileage rendered beyond the 50 mile radius limit
2. Mileage and travel time on portable equipment (*see below*)
3. Labor to replace such items that can be replaced easily during a daily cleaning routine, ie; removable kettles on fryers, knobs, grease drawers on griddles, etc.
4. Installation of equipment
5. Damages due to improper installation
6. Damages from abuse or misuse
7. Operated contrary to the Operating and Installation Instructions
8. Cleaning of equipment
9. Seasoning of griddle plates
10. Voltage conversions
11. Gas conversions
12. Pilot light adjustment
13. Miscellaneous adjustments
14. Thermostat calibration and by-pass adjustment
15. Resetting of circuit breakers or safety controls or reset buttons
16. Replacement of bulbs
17. Replacement of fuses
18. Repair of damage created during transit, delivery, & installation OR created by acts of God

PORTABLE EQUIPMENT

Star will not honor service bills that include travel time and mileage charges for servicing any products considered "Portable" including items listed below. These products should be taken to the Service Agency for repair:

- * The Model 510FD, 510FF Fryer.
- * The Model 526TOA Toaster Oven.
- * The Model J4R, 4 oz. Popcorn Machine.
- * The Model 518CMA & 526CMA Cheese Melter.
- * The Model 12MC & 15MC & 18MCP Hot Food Merchandisers.
- * The Model 12NCPW & 15NCPW Nacho Chip/Popcorn Warmer.
- * All Hot Dog Equipment **except Roller Grills & Drawer Bun Warmers.**
- * All Nacho Cheese Warmers **except Model 11WLA Series Nacho Cheese Warmer.**
- * All Condiment Dispensers **except the Model HPD & SPD Series Dispenser.**
- * All Specialty Food Warmers **except Model 130R, 11RW Series, and 11WSA Series.**
- * All QCS/RCS Series Toasters **except Model QCS3 & RCS3 Series.**
- * All Fast Steamer Models **except Direct Connect Series.**

ALL:

- * Pop-Up Toasters
- * Butter Dispensers
- * Pretzel Merchandisers
(Model 16PD-A Only)
- * Pastry Display Cabinets
- * Nacho Chip Merchandisers
- * Accessories of any kind
- * Sneeze Guards
- * Pizza Ovens
(Model PO12 Only)
- * Heat Lamps
- * Pumps-Manual

The foregoing warranty is in lieu of any and all other warranties expressed or implied and constitutes the entire warranty.

FOR ASSISTANCE

Should you need any assistance regarding the Operation or Maintenance of any Star equipment; write, phone, fax or email our Service Department. In all correspondence mention the Model number and the Serial number of your unit, and the voltage or type of gas you are using.